

JACKY ONE DEPARTURE

**TOP ALTITUDE:
2000**

RNAV 1 - GPS. From BLECO, DECKK,
NOOGY, ROLLS, ZEMMA.

RADAR required.

LONE STAR DEP CON
118.1 306.95
(Rwys 31L/R, 35L/C/R, 36 L/R)
135.975 379.9
(Rwys 13L/R, 17L/C/R, 18L/R)
D-ATIS DEP
135.925
CLNC DEL
128.25
CPDLC
GND CON
121.65 121.8 (EAST)
121.85 (WEST)
DFW TOWER
126.55 127.5 (EAST)
124.15 134.9 (WEST)

△ ROLLS

TULSA
114.4 TUL
Chan 91

TAKEOFF MINIMUMS

Rwys 13L/R, 17L/C/R, 18L/R, 31L/R, 35L/C, 36L/R: Standard.
Rwy 35R: Standard with minimum climb of 245'/NM to 1200.

WILL ROGERS
114.1 IRW
Chan 88

DECKK
△

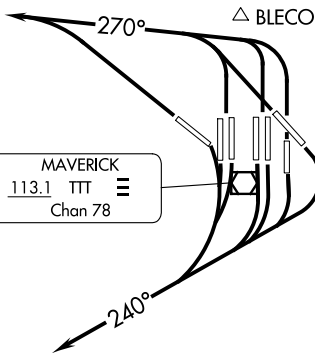
NOOGY
△

ZEMMA
△

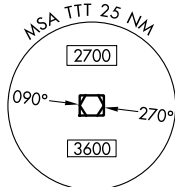
ARDMORE
116.7 ADM
Chan 114

NOTE: Applicable in RADAR environment and for non-turbojet aircraft.

NOTE: BLECO Transition: ATC assigned.



MAVERICK
113.1 TTT
Chan 78



NOTE: Chart not to scale.



DEPARTURE ROUTE DESCRIPTION

NON-TURBOJET AIRCRAFT ONLY

TAKEOFF RUNWAYS 13L/R, 17L/C/R, 18L/R: Climb on heading 240° for RADAR vectors to appropriate route, thence....

TAKEOFF RUNWAYS 31L/R, 35L/C/R, 36L/R: Climb on heading 270° for RADAR vectors to appropriate route, thence....

....maintain 2000 and expect filed altitude 10 minutes after departure.

JACKY ONE DEPARTURE