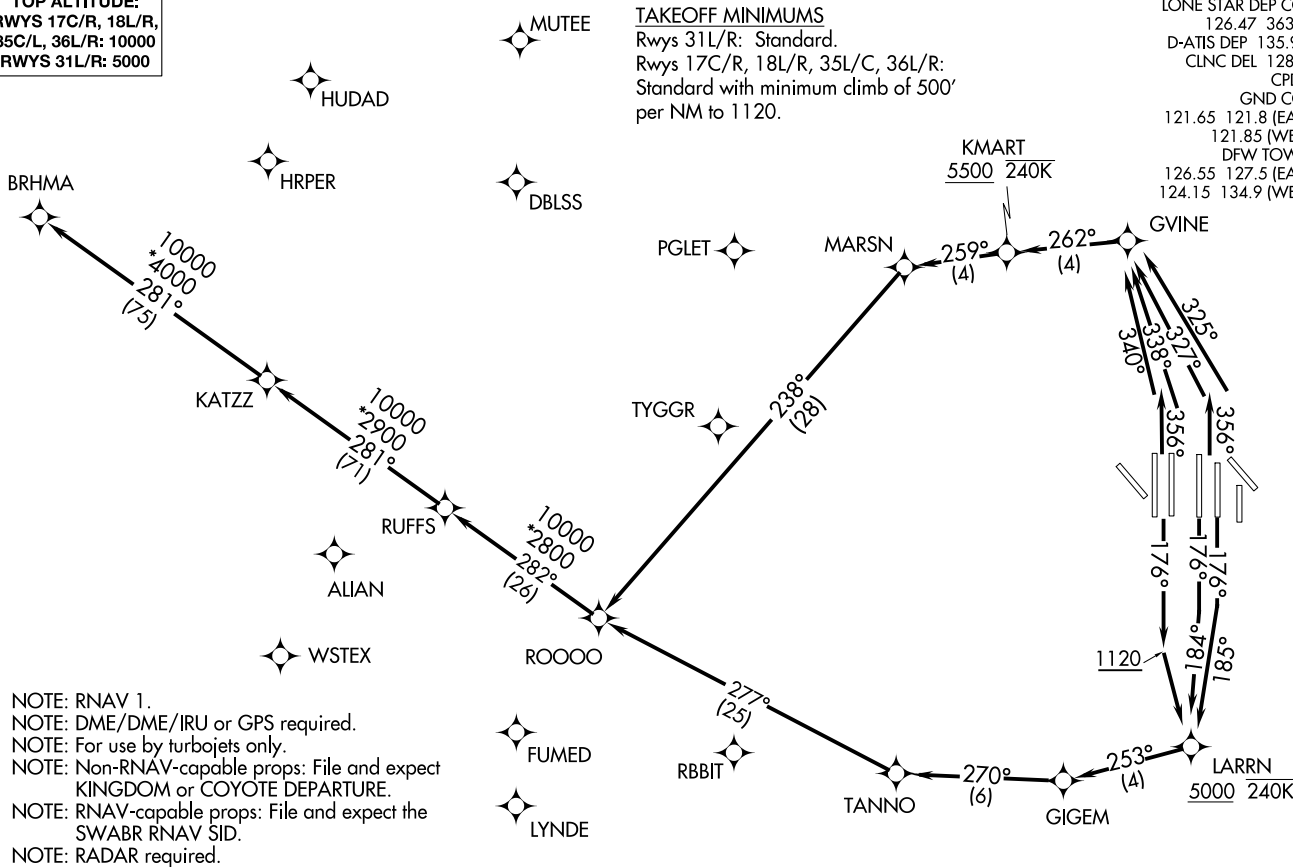


KATZZ TWO DEPARTURE (RNAV)  
(KATZZ2.KATZZ) 04FEB16  
DALLAS-FORT WORTH, TEXAS

**TOP ALTITUDE:**  
RWYS 17C/R, 18L/R,  
35C/L, 36L/R: 10000  
RWYS 31L/R: 5000

**TAKEOFF MINIMUMS**  
Rwys 31L/R: Standard.  
Rwys 17C/R, 18L/R, 35L/C, 36L/R:  
Standard with minimum climb of 500'  
per NM to 1120.

LONE STAR DEP CON 126.47 363.15  
D-ATIS DEP 135.925  
CLNC DEL 128.25  
CPDLC  
GND CON  
121.65 121.8 (EAST)  
121.85 (WEST)  
DFW TOWER  
126.55 127.5 (EAST)  
124.15 134.9 (WEST)



NOTE: RNAV 1.  
NOTE: DME/DME/IRU or GPS required.  
NOTE: For use by turbojets only.  
NOTE: Non-RNAV-capable props: File and expect KINGDOM or COYOTE DEPARTURE.  
NOTE: RNAV-capable props: File and expect the SWABR RNAV SID.  
NOTE: RADAR required.

(CONTINUED ON FOLLOWING PAGE)

NOTE: Chart not to scale

(KATZZ2.KATZZ) 24305  
AL-6039 (FAA)  
DALLAS-FORT WORTH INTL (DFW)  
DALLAS-FORT WORTH, TEXAS



DEPARTURE ROUTE DESCRIPTION

TAKEOFF RWY 17C: Climb heading 176° to intercept course 185° to cross LARRN at or above 5000, then on track 253° to GIGEM, then on track 270° to TANNO, then on track 277° to ROOOO, thence. . . .

TAKEOFF RWY 17R: Climb heading 176° to intercept course 184° to cross LARRN at or above 5000, then on track 253° to GIGEM, then on track 270° to TANNO, then on track 277° to ROOOO, thence. . . .

TAKEOFF RWY 18L/R: Climb heading 176° to 1120, then direct to cross LARRN at or above 5000, then on track 253° to GIGEM, then on track 270° to TANNO, then on track 277° to ROOOO, thence. . . .

TAKEOFF RWY 35C: Climb heading 356° to intercept course 325° to GVINE, then on track 262° to cross KMART at or above 5500, then on track 259° to MARSN, then on track 238° to ROOOO, thence. . . .

TAKEOFF RWY 35L: Climb heading 356° to intercept course 327° to GVINE, then on track 262° to cross KMART at or above 5500, then on track 259° to MARSN, then on track 238° to ROOOO, thence. . . .

TAKEOFF RWY 36L: Climb heading 356° to intercept course 340° to GVINE, then on course 262° to cross KMART at or above 5500, then on track 259° to MARSN, then on track 238° to ROOOO, thence. . . .

TAKEOFF RWY 36R: Climb heading 356° to intercept course 338° to GVINE, then on course 262° to cross KMART at or above 5500, then on track 259° to MARSN, then on track 238° to ROOOO, thence. . . .

. . . .on track 282° to RUFFS, then on track 281° to KATZZ, then on (transition). Maintain 10000, expect filed altitude 10 minutes after departure.

TAKEOFF RWY 31L/R: Climb heading assigned by ATC, expect radar vectors to ROOOO, thence. . . .

. . . .on track 282° to RUFFS, then on track 281° to KATZZ, then on (transition). Maintain 5000, expect filed altitude ten minutes after departure.

BRHMA TRANSITION (KATZZ2.BRHMA)

SC-2, 28 NOV 2024 to 26 DEC 2024

SC-2, 28 NOV 2024 to 26 DEC 2024