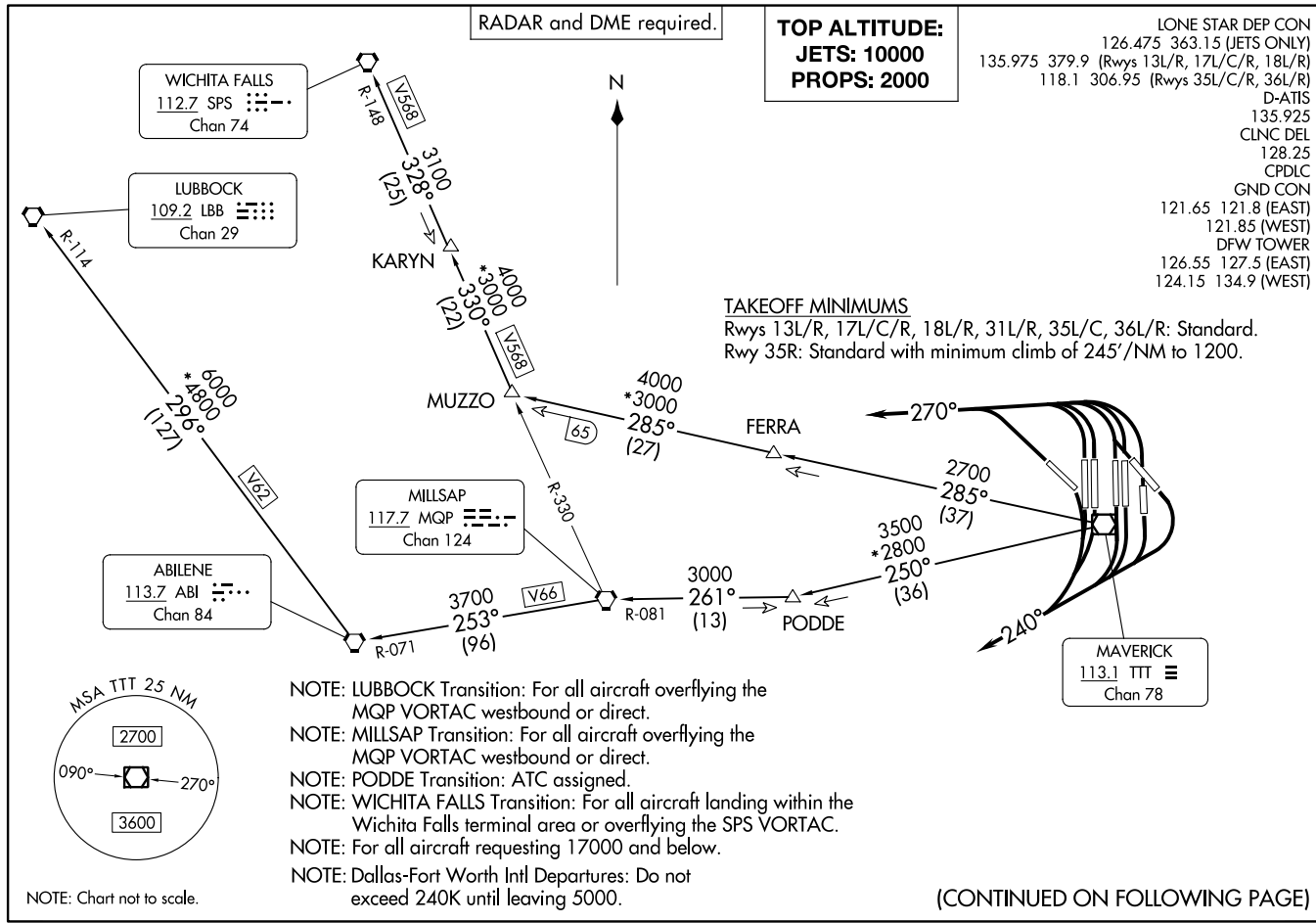


KINGDOM FOUR DEPARTURE  
(KING4.TTT) 25JAN24

DALLAS-FORT WORTH, TEXAS  
DALLAS-FORT WORTH INTL (DFW)



RADAR and DME required.

**TOP ALTITUDE:**  
**JETS: 10000**  
**PROPS: 2000**

LONE STAR DEP CON  
126.475 363.15 (JETS ONLY)  
135.975 379.9 (Rwys 13L/R, 17L/C/R, 18L/R)  
118.1 306.95 (Rwys 35L/C/R, 36L/R)

D-ATIS  
135.925  
CLNC DEL  
128.25  
CPDLC  
GND CON  
121.65 121.8 (EAST)  
121.85 (WEST)  
DFW TOWER  
126.55 127.5 (EAST)  
124.15 134.9 (WEST)

TAKEOFF MINIMUMS  
Rwys 13L/R, 17L/C/R, 18L/R, 31L/R, 35L/C, 36L/R: Standard.  
Rwy 35R: Standard with minimum climb of 245'/NM to 1200.

- NOTE: LUBBOCK Transition: For all aircraft overflying the MQP VORTAC westbound or direct.
- NOTE: MILLSAP Transition: For all aircraft overflying the MQP VORTAC westbound or direct.
- NOTE: PODDE Transition: ATC assigned.
- NOTE: WICHITA FALLS Transition: For all aircraft landing within the Wichita Falls terminal area or overflying the SPS VORTAC.
- NOTE: For all aircraft requesting 17000 and below.
- NOTE: Dallas-Fort Worth Intl Departures: Do not exceed 240K until leaving 5000.

NOTE: Chart not to scale.

(CONTINUED ON FOLLOWING PAGE)

(KING4.TTT) 24305  
KINGDOM FOUR DEPARTURE

AL-6039 (FAA)  
DALLAS-FORT WORTH INTL (DFW)  
DALLAS-FORT WORTH, TEXAS

# KINGDOM FOUR DEPARTURE



## DEPARTURE ROUTE DESCRIPTION

### JETS

TAKEOFF RUNWAYS 13L/R, 17L/C/R, 18L/R, 31L/R, 35L/C/R, 36L/R: Climb on assigned heading for RADAR vectors to appropriate route, thence. . .

. . .maintain 10000 and expect filed altitude 10 minutes after departure.

### PROPS

TAKEOFF RUNWAYS 13L/R, 17L/C/R, 18L/R: Climb on heading 240° then on assigned heading for RADAR vectors to appropriate route, thence. . .

TAKEOFF RUNWAYS 31L/R, 35L/C/R, 36L/R: Climb on heading 270° then on assigned heading for RADAR vectors to appropriate route, thence. . .

. . .maintain 2000 and expect filed altitude 10 minutes after departure.

LUBBOCK TRANSITION (KING4.LBB): From over TTT VOR/DME on TTT R-250 to PODDE, then on MQP R-081 to MQP VORTAC, then on MQP R-253 and ABI R-071 to ABI VORTAC, then on ABI R-296 and LBB R-114 to LBB VORTAC.

MILLSAP TRANSITION (KING4.MQP): From over TTT VOR/DME on TTT R-250 to PODDE, then on MQP R-081 to MQP VORTAC.

PODDE TRANSITION (KING4.PODDE): From over TTT VOR/DME on TTT R-250 to PODDE.

WICHITA FALLS TRANSITION (KING4.SPS): From over TTT VOR/DME on TTT R-285 to MUZZO, then on MQP R-330 and SPS R-148 to KARYN, then on SPS R-148 to SPS VORTAC.

SC-2, 28 NOV 2024 to 26 DEC 2024

SC-2, 28 NOV 2024 to 26 DEC 2024