

WAAS CH <b>99703</b> <b>W31A</b>	APP CRS <b>315°</b>	Rwy Idg <b>9300</b> TDZE <b>581</b> Apt Elev <b>607</b>
--	------------------------	---

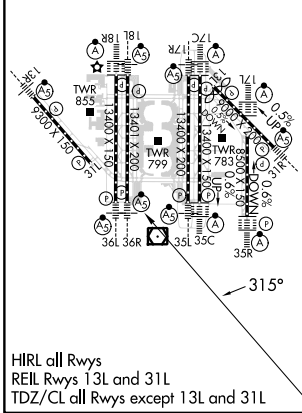
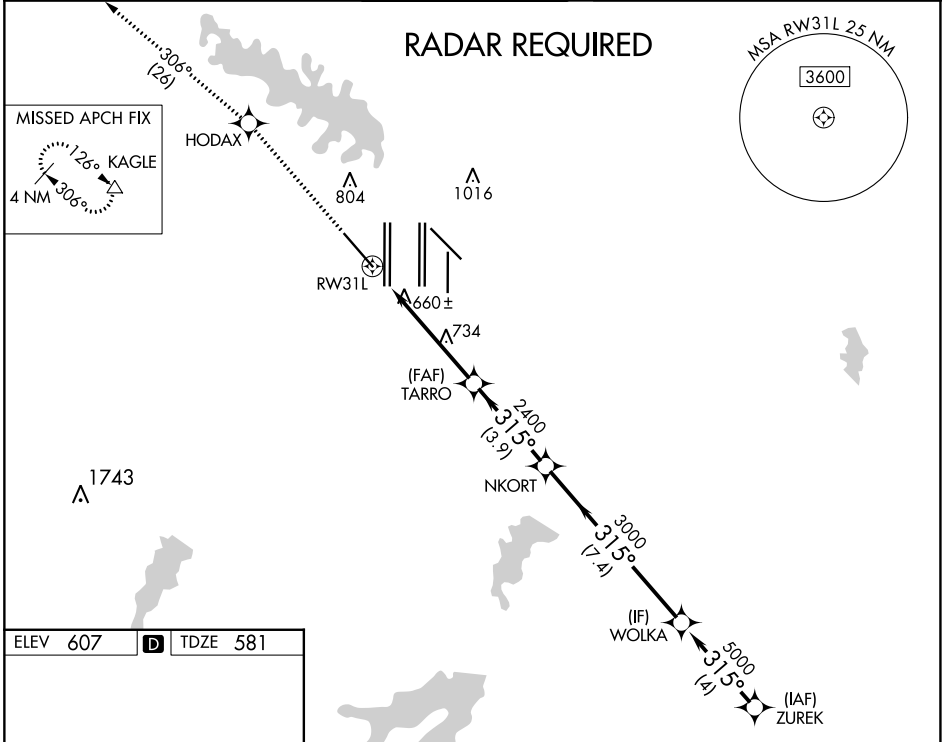
# RNAV (GPS) Y RWY 31L

DALLAS-FORT WORTH INTL (DFW)

⚠ For uncompensated Baro-VNAV systems, LNAV/VNAV NA below -4°C (25°F) or above 54°C (130°F). Simultaneous approach authorized with Rwy 31R. DME/DME RNP-0.3 NA. LNAV procedure NA during simultaneous operations. Use of FD or AP providing RNAV track guidance required during simultaneous operations.

MISSED APPROACH: Climb to 3000 direct HODAX and on track 306° to KAGLE and hold.

D-ATIS ARR <b>123.775</b> DEP <b>135.925</b>	LONE STAR APP CON <b>118.425 127.075 119.4</b>	DFW TOWER <b>126.55 127.5 EAST</b> <b>124.15 134.9 WEST</b>	GND CON <b>121.65 121.8 EAST</b> <b>121.85 WEST</b>	CLNC DEL <b>128.25</b>	CPDLC
--	---	---	---	---------------------------	-------



ELEV 607	<b>D</b>	TDZE 581			
3000	HODAX	tr 306°	KAGLE	VGSI and RNAV glidepath not coincident (VGSI Angle 3.13/TCH 72).	
*LNAV only.		TARRO	NKORT	WOLKA	ZUREK
*1.2 NM to RW31L		TARRO 2400	NKORT 2400	3000	5000
RW31L		315°		315°	5000
1.2		4.4 NM	3.9 NM	7.4 NM	4 NM
CATEGORY	A	B	C	D	
LPV DA		831/40	250 (300-¾)		
LNAV/VNAV DA		907/50	326 (400-1)		
LNAV MDA	1060/55	479 (500-1)	1060-1½	479 (500-1½)	

SC-2, 28 NOV 2024 to 26 DEC 2024

SC-2, 28 NOV 2024 to 26 DEC 2024