

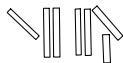
**TOP ALTITUDE:  
2000**

LONE STAR DEP CON  
 135.975 379.9  
 (Rwys 13L/R, 17L/C/R, 18L/R)  
 118.1 306.95  
 (Rwys 31L/R, 35L/C/R, 36L/R)  
 D-ATIS DEP  
 135.925  
 CLNC DEL  
 128.25  
 CPDLC  
 GND CON  
 121.65 121.8 (EAST)  
 121.85 (WEST)  
 DFW TOWER  
 126.55 127.5 (EAST)  
 124.15 134.9 (WEST)

(SWABR) .SWABR) 24305  
SWABR ONE DEPARTURE (RNAV)

AL-6039 (FAA)

DALLAS-FORT WORTH INTL (DFW)  
DALLAS-FORT WORTH, TEXAS

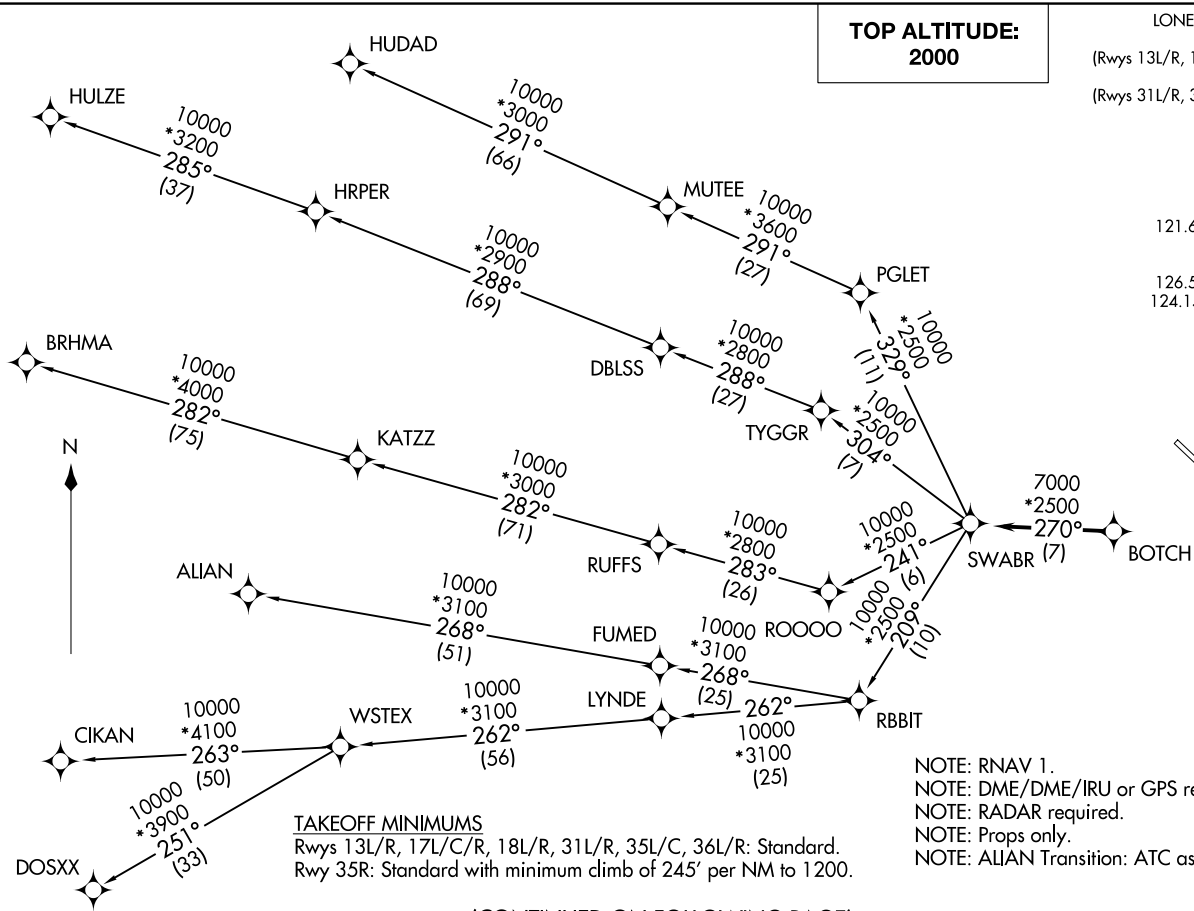


- NOTE: RNAV 1.
- NOTE: DME/DME/IRU or GPS required.
- NOTE: RADAR required.
- NOTE: Props only.
- NOTE: ALIAN Transition: ATC assigned only.

**TAKEOFF MINIMUMS**  
 Rwys 13L/R, 17L/C/R, 18L/R, 31L/R, 35L/C, 36L/R: Standard.  
 Rwy 35R: Standard with minimum climb of 245' per NM to 1200.

(CONTINUED ON FOLLOWING PAGE)

NOTE: Chart not to scale.



SWABR ONE DEPARTURE (RNAV)  
(SWABR) .SWABR) 24MAR22

DALLAS-FORT WORTH, TEXAS  
DALLAS-FORT WORTH INTL (DFW)

# SWABR ONE DEPARTURE (RNAV)



## DEPARTURE ROUTE DESCRIPTION

TAKEOFF RUNWAYS 13L/R, 17L/C/R, 18L/R, 31L/R, 35L/C/R, 36L/R: Climb on assigned heading for RADAR vectors to BOTCH. Then on track 270° to SWABR, then on (transition). Maintain 2000. Expect filed altitude 10 minutes after departure.

ALIAN TRANSITION (SWABR1.ALIAN)

BRHMA TRANSITION (SWABR1.BRHMA)

CIKAN TRANSITION (SWABR1.CIKAN)

DOSXX TRANSITION (SWABR1.DOSXX)

HUDAD TRANSITION (SWABR1.HUDAD)

HULZE TRANSITION (SWABR1.HULZE)

WSTEX TRANSITION (SWABR1.WSTEX)

SC-2, 28 NOV 2024 to 26 DEC 2024

SC-2, 28 NOV 2024 to 26 DEC 2024