

WILBR NINE ARRIVAL
(WILBR: WILBR9) 11 JUL24

Transition Routes

DALLAS-FORT WORTH, TEXAS
DALLAS-FORT WORTH INTL (DFW)

LONE STAR APP CON
125.025 263.025
D-ATIS ARR
123.775

ARDMORE
116.7 ADM
Chan 114

NOTE: RADAR required.
NOTE: DME required.

BONHAM
114.6 BYP
Chan 93

Parachute Jumping Area for
Trenton, Tri-County Air Estates

See following page for
arrival route.

TULSA
114.4 TUL
Chan 91

KOMMA

FORT SMITH
110.4 FSM
Chan 41

LITTLE ROCK
113.9 LIT
Chan 86



RICH MOUNTAIN
113.5 PGO
Chan 82

MEEOW
FL180
*3000
247°
(70)

BIRLE
13000
*2800
159
035°
215°
(60)

GAATZ
5000
*2200
299
035°
215°
(29)

HAKIN
7000
*2200
244°
(28)
(3) 5000
*2100
244°
(28)

GLOVE
FL180
*3000
247°
(83)
113

ROBEY
5000
*2100
29
064°
(20)
(5)

TEXARKANA
116.3 TXK
Chan 110

OKUCI
5000
*2100
196
110
(5)
(7)
(6)

DECAP
5000
*2100
12
(12)
(17)

PARIS
113.6 PRX
Chan 83

MONTE
5000
*2100
263°
(22)

EL DORADO
115.5 ELD
Chan 102

COWBOY
116.2 CVE
Chan 109

GREGG COUNTY
112.9 GGG
Chan 76

(CONTINUED ON FOLLOWING PAGE)

NOTE: Chart not to scale.

WILBR NINE ARRIVAL
(WILBR: WILBR9) 24305

Transition Routes

DALLAS-FORT WORTH INTL (DFW)
DALLAS-FORT WORTH, TEXAS

AL-6039 (FAA)

LONE STAR APP CON
125.025 263.025
D-ATIS ARR
123.775

ARDMORE
116.7 ADM
Chan 114

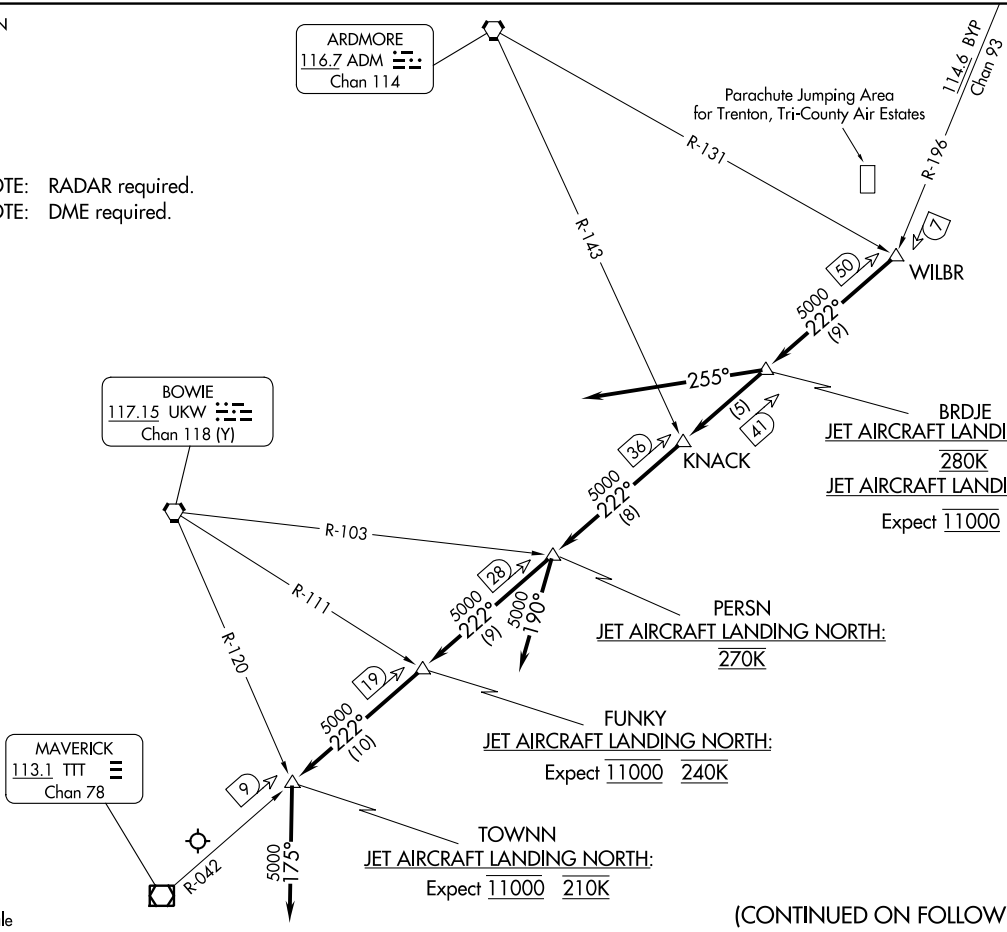
BOWIE
117.15 UKW
Chan 118 (Y)

MAVERICK
113.1 TTT
Chan 78

NOTE: RADAR required.
NOTE: DME required.



Note: Chart not to scale



(CONTINUED ON FOLLOWING PAGE)

WILBR NINE ARRIVAL

ARRIVAL ROUTE DESCRIPTION

BONHAM TRANSITION (BYP.WILBR9): From over BYP VORTAC on BYP R-196 to WILBR. Thence . . .

FORT SMITH TRANSITION (FSM.WILBR9): From over FSM VORTAC on FSM R-215 to MAMEE, then on BYP R-035 to BYP VORTAC, then on BYP R-196 to WILBR. Thence . . .

LITTLE ROCK TRANSITION (LIT.WILBR9): From over LIT VORTAC on LIT R-247 to MEEOW, then on LIT R-247 and BYP R-064 to GLOVE, then on BYP R-064 to DECAP, then on TTT R-042 to WILBR. Thence . . .

PARIS TRANSITION (PRX.WILBR9): From over PRX VOR/DME on PRX R-263 and BYP R-083 to MONTE, then on BYP R-083 to OKUCI, then on TTT R-042 to WILBR. Thence . . .

TEXARKANA TRANSITION (TXK.WILBR9): From over TXK VORTAC on TXK R-286 to GLOVE, then on BYP R-064 to DECAP, then on TTT R-042 to WILBR. Thence . . .

TULSA TRANSITION (TUL.WILBR9): From over TUL VORTAC on TUL R-157 to MAMEE, then on BYP R-035 to BYP VORTAC, then on BYP R-196 to WILBR. Thence . . .

. . . . from over WILBR on TTT R-042

ALL AIRCRAFT LANDING SOUTH: To BRDJE depart heading 255°, expect RADAR vectors for base leg.

JETS LANDING NORTH: To BRDJE, to KNACK, to PERSN, to FUNKY, to TOWNNN, then depart heading 175°, expect RADAR vectors.

PROP AIRCRAFT LANDING NORTH: To BRDJE, to KNACK, to PERSN, then depart heading 190°, expect RADAR vectors.

SC-2, 28 NOV 2024 to 26 DEC 2024

SC-2, 28 NOV 2024 to 26 DEC 2024