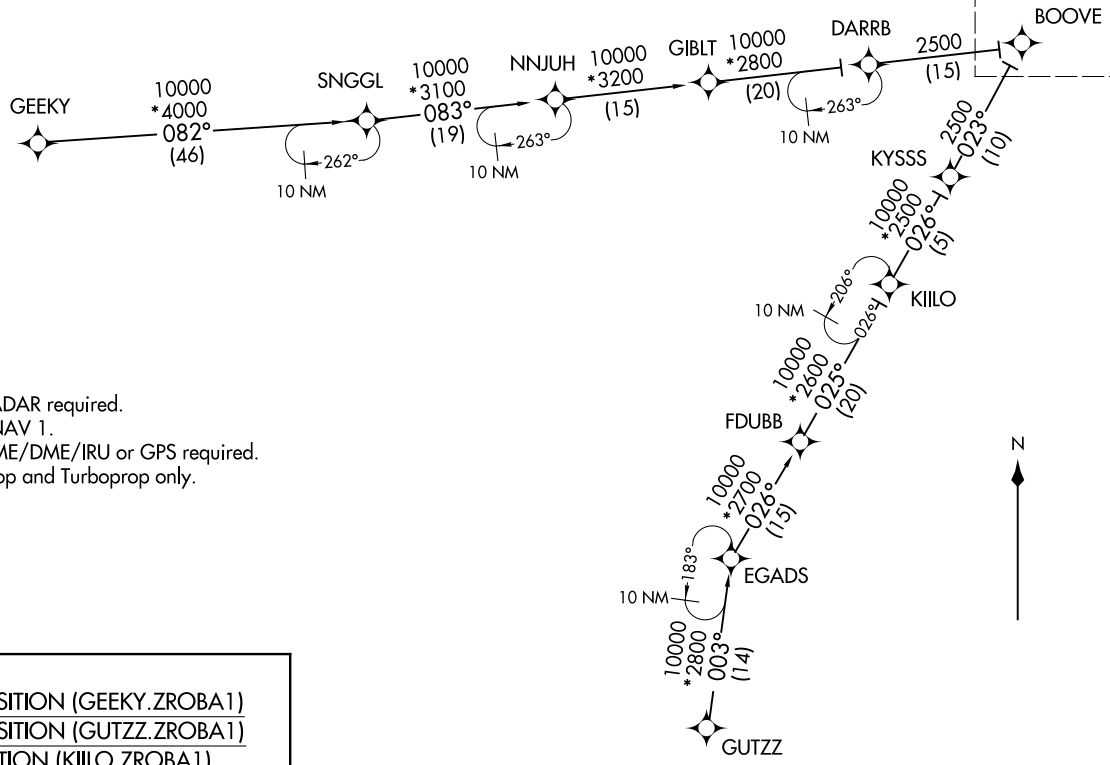


See following page for arrival route.



NOTE: RADAR required.  
 NOTE: RNAV 1.  
 NOTE: DME/DME/IRU or GPS required.  
 NOTE: Prop and Turboprop only.

LONE STAR APP CON  
 119.875 284.65  
 D-ATIS ARR  
 123.775

GEEKY TRANSITION (GEEKY.ZROBA1)  
GUTZZ TRANSITION (GUTZZ.ZROBA1)  
KIILLO TRANSITION (KIILLO.ZROBA1)  
SNGGL TRANSITION (SNGGL.ZROBA1)

(CONTINUED ON FOLLOWING PAGE)

NOTE: Chart not to scale.

ZROBA ONE ARRIVAL (RNAV) Transition Routes  
 (BOOVE.ZROBA1) 26MAR20

DALLAS-FORT WORTH, TEXAS  
 DALLAS-FORT WORTH INTL (DFW)

(BOOVE.ZROBA1) 24305  
 ZROBA ONE ARRIVAL (RNAV) Transition Routes

AT-6039 (FAA)  
 DALLAS-FORT WORTH INTL (DFW)  
 DALLAS-FORT WORTH, TEXAS

(BOOVE.ZROBA1) 24305

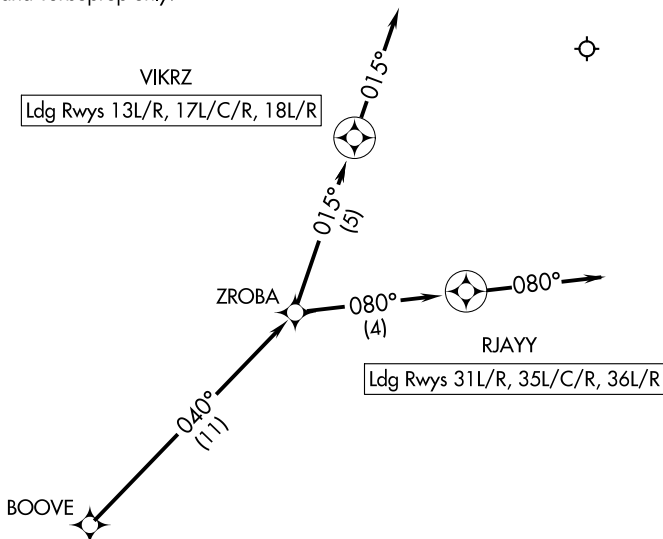
AL-6039 (FAA)

DALLAS-FORT WORTH INTL (DFW)  
DALLAS-FORT WORTH, TEXAS

# ZROBA ONE ARRIVAL (RNAV) Arrival Route

LONE STAR APP CON  
119.875 284.65  
D-ATIS ARR  
123.775

- NOTE: RADAR required.
- NOTE: RNAV 1.
- NOTE: DME/DME/IRU or GPS required.
- NOTE: Prop and Turboprop only.



NOTE: Chart not to scale.

## ARRIVAL ROUTE DESCRIPTION

From BOOVE on track 040° to ZROBA.

Landing RUNWAYS 13L/R, 17L/C/R, 18L/R: From ZROBA on track 015° to VIKRZ, then on track 015°. Expect RADAR vectors to final approach course.

Landing RUNWAYS 35L/C/R, 36L/R, 31L/R: From ZROBA on track 080° to RJAYY, then on track 080°. Expect RADAR vectors to final approach course.

# ZROBA ONE ARRIVAL (RNAV) Arrival Route

(BOOVE.ZROBA1) 26MAR20

DALLAS-FORT WORTH, TEXAS  
DALLAS-FORT WORTH INTL (DFW)

SC-2, 28 NOV 2024 to 26 DEC 2024

SC-2, 28 NOV 2024 to 26 DEC 2024