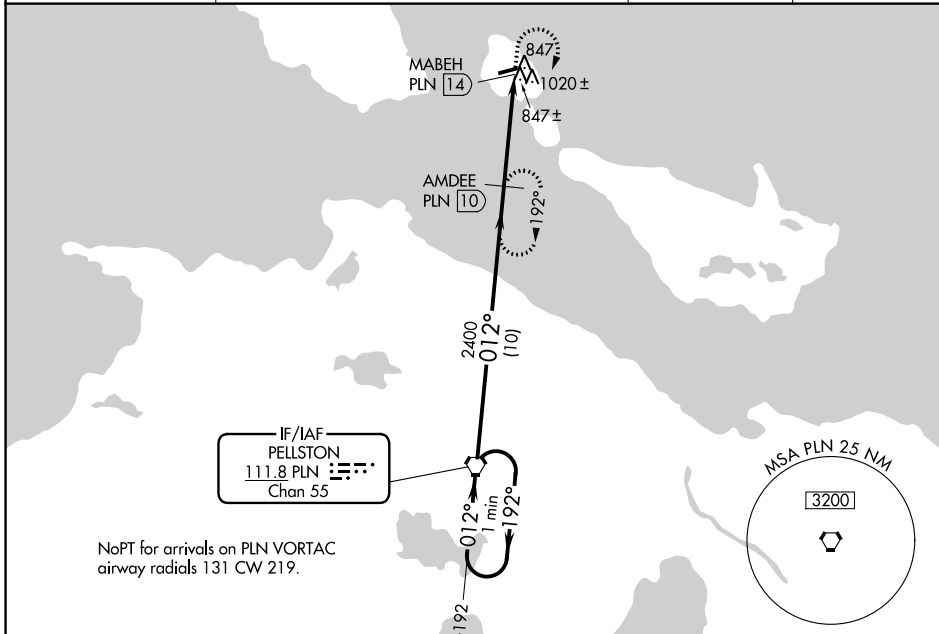


VORTAC PLN <b>111.8</b> Chan 55	APP CRS <b>012°</b>	Rwy Idg TDZE Apt Elev <b>N/A</b> <b>N/A</b> <b>741</b>
---------------------------------------	------------------------	---

**VOR/DME-A**  
MACKINAC ISLAND (MCD)

<p>⚠ When local altimeter setting not received, use Pellston altimeter setting and increase all MDA 60 feet, increase Cat C visibility ¼ mile.                  ⚠ Visibility reduction by helicopters NA. Night landing: Rwy 8 NA.</p>	<p>MISSED APPROACH: Climb to 1400 then climbing right turn to 2400 direct AMDEE 10 DME and hold.</p>
--	--

AWOS-3 <b>118.275</b>	MINNEAPOLIS CENTER <b>134.6 354.05</b>	UNICOM <b>122.7 (CTAF)</b>	<b>122.8</b>
--------------------------	---	-------------------------------	--------------

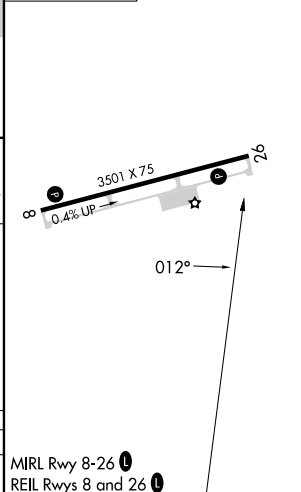
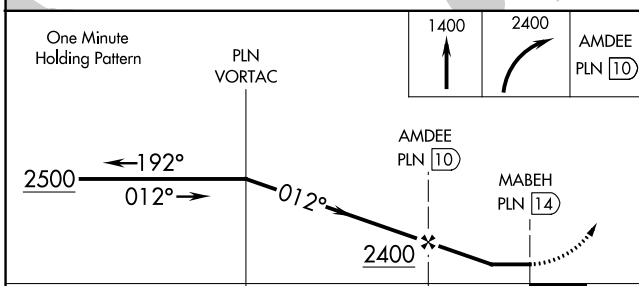


EC-1, 28 NOV 2024 to 26 DEC 2024

EC-1, 28 NOV 2024 to 26 DEC 2024



ELEV 741
----------



CATEGORY	A	B	C	D
CIRCLING	1320-1	579 (600-1)	1320-1½ 579 (600-1½)	NA

MIRL Rwy 8-26   
REIL Rwys 8 and 26