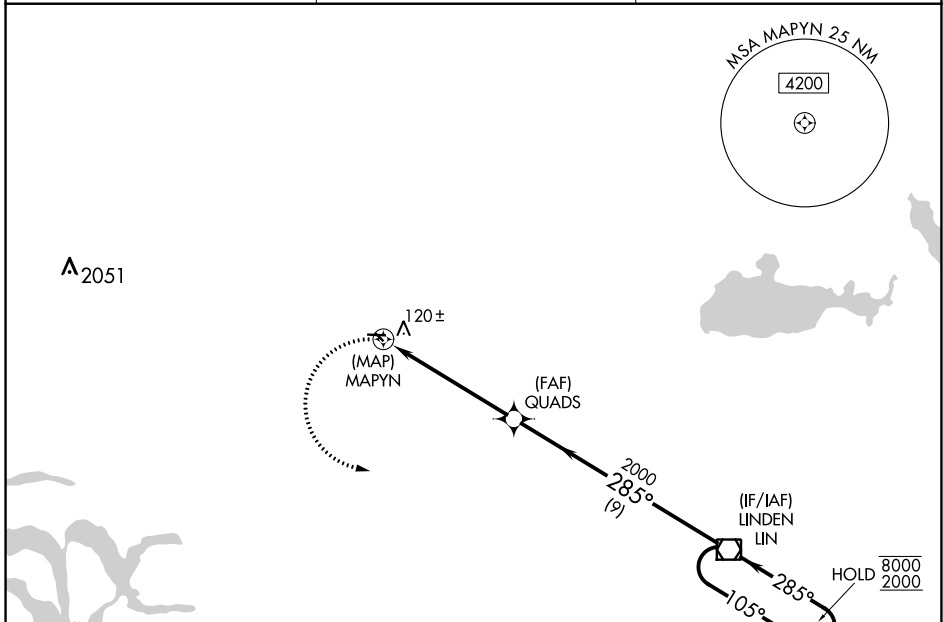


APP CRS 285°	Rwy Idg TDZE Apt Elev	N/A N/A 60
------------------------	-----------------------------	---------------------------------------

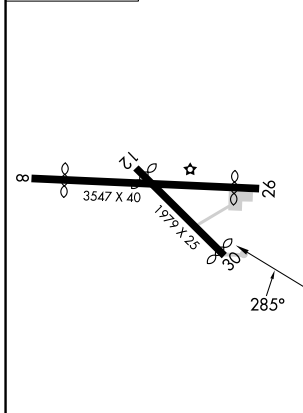
RNAV (GPS)-B

LODI (103)

RNP APCH.		MISSED APPROACH: Climbing left turn to 2000 direct LIN VOR/DME and hold.
▼	Procedure NA at night.	
▲NA	Use Stockton altimeter setting; when not received, use Sacramento Intl altimeter setting and increase all MDA 40 feet.	
SCK ASOS 118.25	NORCAL APP CON 125.1 363.2	CTAF 122.9



ELEV 60



NoPT for arrival on LIN VOR/DME airway radials 124 CW 158.

2000	LIN	QUADS	LIN VOR/DME	4 NM Holding Pattern
2000	MAPYN	285°	105°	8000
2000	285°	285°	285°	2000
5.5 NM	9 NM			
CATEGORY	A	B	C	D
☑ CIRCLING	640-1	580 (600-1)		NA

SW-2, 28 NOV 2024 to 26 DEC 2024

SW-2, 28 NOV 2024 to 26 DEC 2024