

| | | |
|---|------------------------|---|
| NDB/DME YP 317 Chan 122 (117.5) | APP CRS 237° | Rwy Idg 6000 TDZE 90 Apt Elev 91 |
|---|------------------------|---|

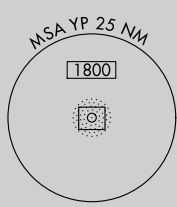
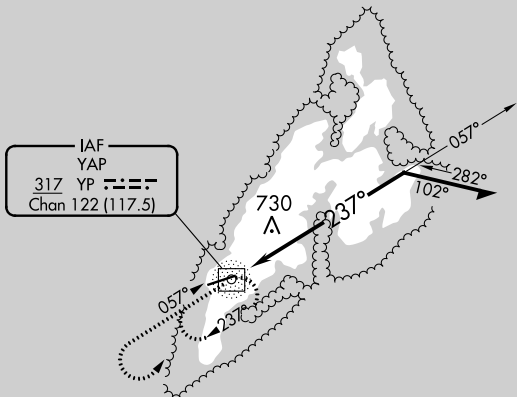
NDB RWY 25

YAP INTL (T11)(PTYA)

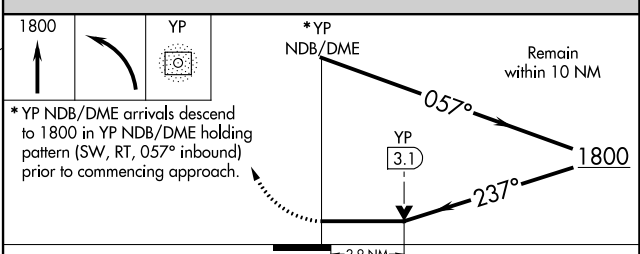
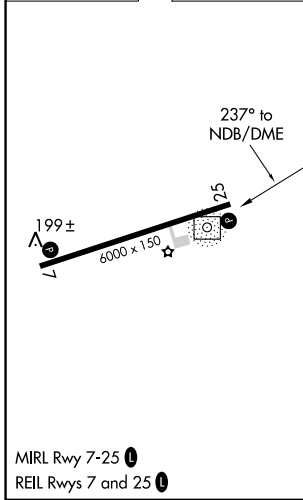
⚠ Circling NA north of Rwy 7-25.
No controlled airspace below 5500.

MISSED APPROACH: Climb to 1800 then left turn direct YP NDB/DME and hold.

YAP RADIO
123.6 (CTAF)



| | |
|---------|---------|
| ELEV 91 | TDZE 90 |
|---------|---------|



| CATEGORY | A | B | C | D |
|-------------------|--------------------------|--------------------------|--------|--------------|
| S-25 | 1080-1¼ 990 (1000-1¼) | 1080-1½ 990 (1000-1½) | 1080-3 | 990 (1000-3) |
| C CIRCLING | 1080-1¼ 989 (1000-1¼) | 1080-1½ 989 (1000-1½) | 1080-3 | 989 (1000-3) |

YAP ISLAND, FM
Orig-C 27JAN22

09°30'N-138°05'E

YAP INTL (T11)(PTYA)

NDB RWY 25

PAC, 31 OCT 2024 to 26 DEC 2024

PAC, 31 OCT 2024 to 26 DEC 2024