

NDB/DME YP 317	APP CRS 237°	Rwy ldg TDZE Apt Elev	6000 90 91
Chan 122 (117.5)			

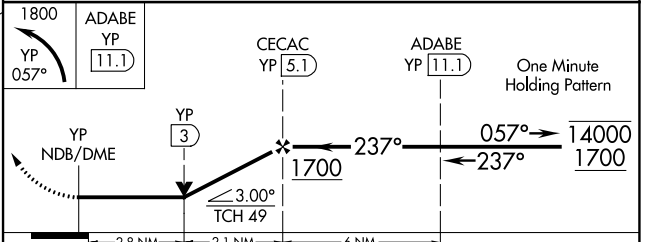
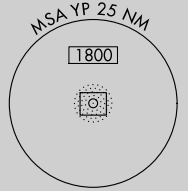
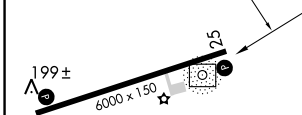
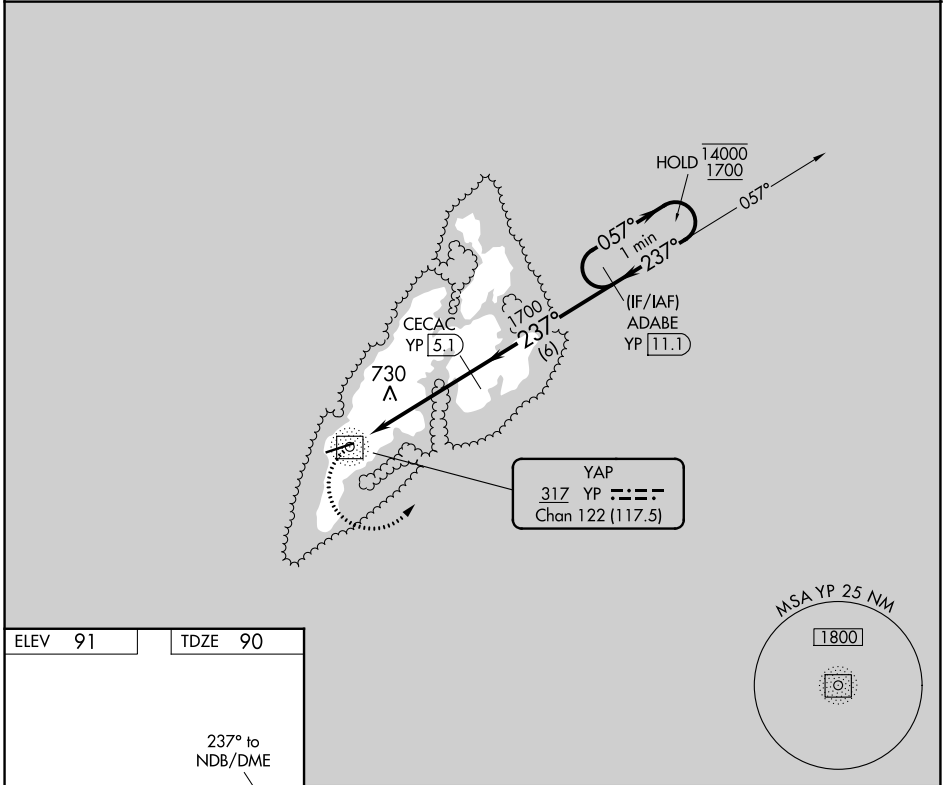
NDB/DME RWY 25

YAP INTL (T11)(PTYA)

⚠ Circling NA north of Rwy 7-25.
No controlled airspace below 5500.

⚠ MISSED APPROACH: Climbing left turn to 1800 on 057° bearing from YP NDB/DME to ADABE/11.1 DME and hold.

YAP RADIO
123.6 (CTAF)



CATEGORY	A	B	C	D
S-25	1040-1¼ 950 (1000-1¼)	1040-1½ 950 (1000-1½)	1040-3	950 (1000-3)
CIRCLING	1040-1¼ 949 (1000-1¼)	1040-1½ 949 (1000-1½)	1040-3	949 (1000-3)

MIRL Rwy 7-25 **⓪**
REIL Rws 7 and 25 **⓪**

PAC, 31 OCT 2024 to 26 DEC 2024

PAC, 31 OCT 2024 to 26 DEC 2024