

APP CRS	Rwy Idg	7913
246°	TDZE	7
	Apt Elev	7

RNAV (GPS) RWY 25

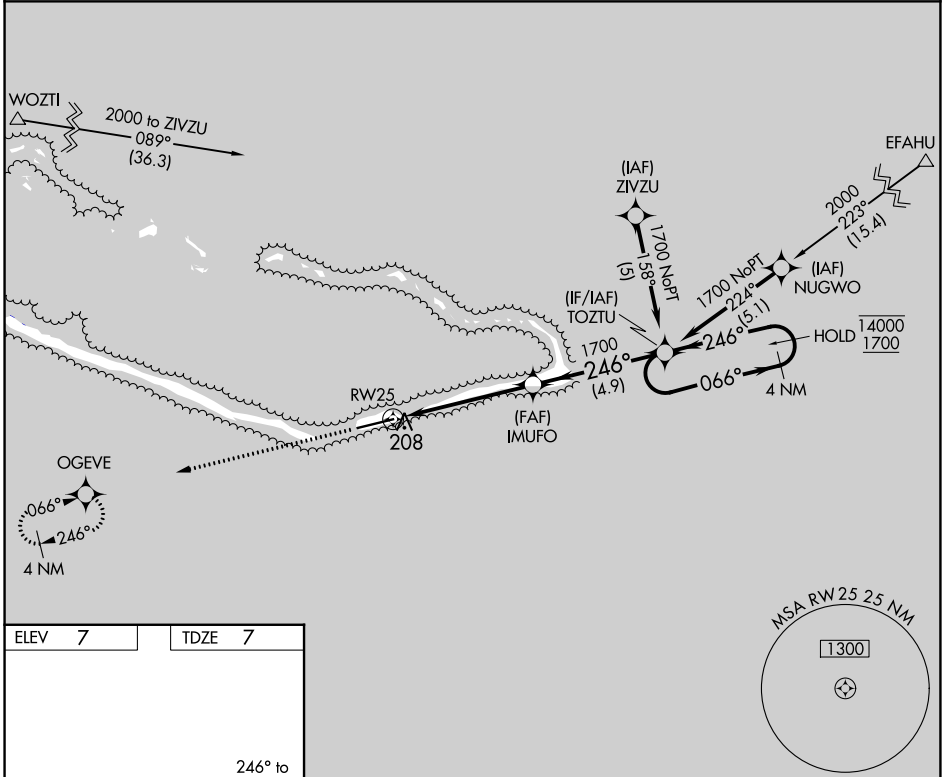
AMATA KABUA INTL (MAJ)(PKMJ)

RNP APCH-GPS.

▼ Rwy 25 helicopter visibility reduction below 3/4 SM NA. Obtain local altimeter setting on CTAF; when not received, procedure NA. Uncontrolled airspace below 5500.

MISSED APPROACH: Climb to 1700 direct OGEVE and hold.

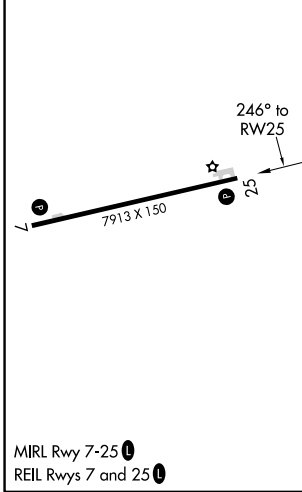
MAJURO RADIO
123.6 (CTAF) 0



PAC, 31 OCT 2024 to 26 DEC 2024

PAC, 31 OCT 2024 to 26 DEC 2024

ELEV	7	TDZE	7
------	---	------	---



1700	OGEVE	VGSI and RNAV glidepath not coincident (VGSI Angle 3.00/TCH 46).	
		IMUFO	TOZTU 4 NM Holding Pattern
		1.3 NM to RWY 25	1700
		≤ 3.00° TCH 54	066° → 14000 ← 246° 1700
		1.3	3.9 NM 4.9 NM
CATEGORY	A	B	C D
LNAV MDA	460-1	453 (500-1)	460-1 3/8 453 (500-1 3/8)
C CIRCLING	520-1	513 (600-1)	520-1 1/2 513 (600-1 1/2) 560-2 553 (600-2)

MAJURO ATOLL, MH
Orig-F 14JUL22

07°04'N-171°16'E

AMATA KABUA INTL (MAJ)(PKMJ)

RNAV (GPS) RWY 25