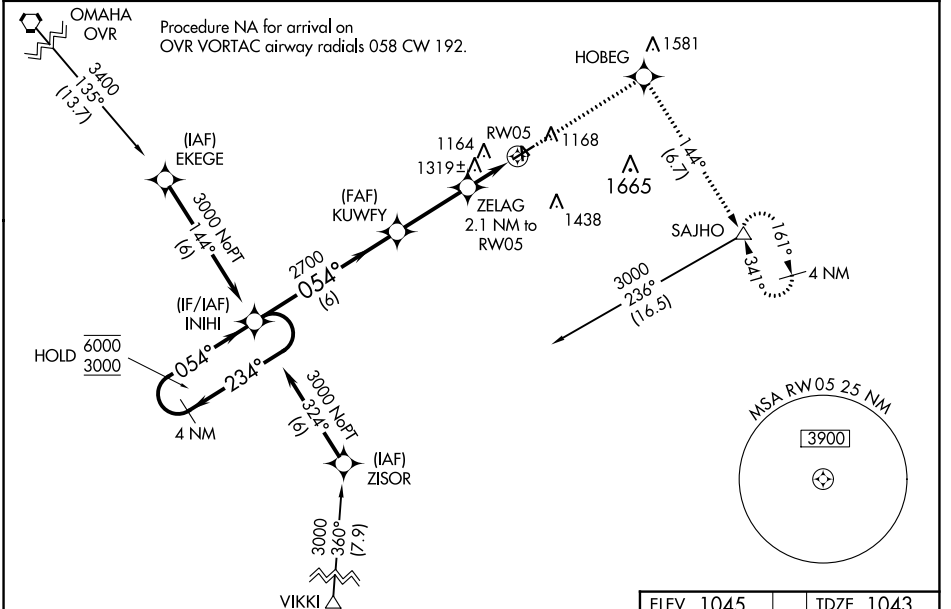


WAAS CH 42927 W05A	APP CRS 054°	Rwy ldg TDZE 1043 Apt Elev 1045
--	------------------------	---

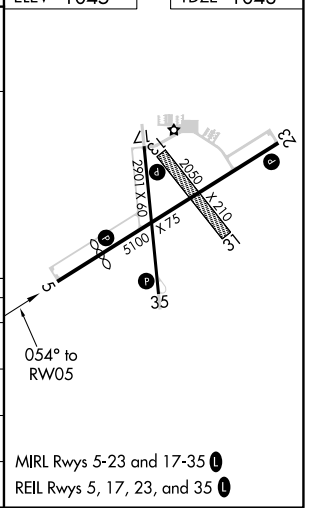
RNAV (GPS) RWY 5

RED OAK MUNI (RDK)

RNP APCH		MISSED APPROACH: Climb to 3000 direct HOBEG and right turn on track 144° to SAJHO and hold.
<p>▽</p> <p>▲ Circling NA to Rwys 13 and 31. For uncompensated Baro-VNAV systems, LNAV/VNAV NA below -17° C or above 54° C.</p>		
AWOS-3P 123.925	OMAHA APP CON 124.5 263.0	UNICOM 122.8 (CTAF) 0



VGSi and RNAV glidepath not coincident (VGSi Angle 3.00/TCH 26). 4 NM Holding Pattern 6000 ← 234° → 3000 GP 3.00° TCH 40 054° → 2700 → 054° → RW05 *1740		3000 HOBEG tr 144° SAJHO *LNAV only		
CATEGORY	A	B	C	D
LPV DA	1363-1	320 (400-1)		NA
LNAV/VNAV DA	1660-2¼	617 (700-2¼)		NA
LNAV MDA	1600-1	557 (600-1)		NA
CIRCLING	1620-1 575 (600-1)	1740-1 695 (700-1)		NA



MIRL Rws 5-23 and 17-35 0
REIL Rws 5, 17, 23, and 35 0

NC-3, 28 NOV 2024 to 26 DEC 2024

NC-3, 28 NOV 2024 to 26 DEC 2024