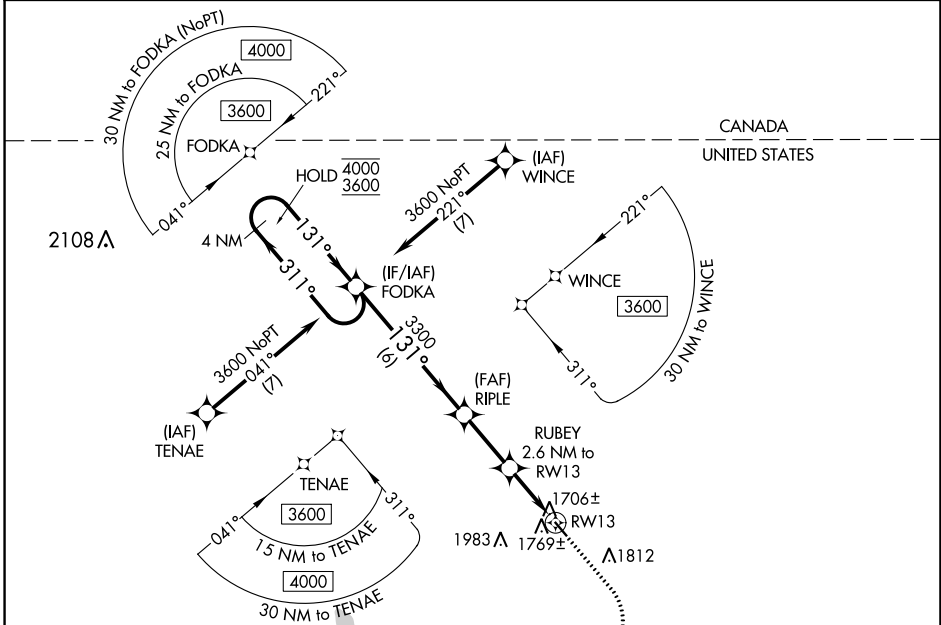


WAAS CH <b>45844</b> <b>W13A</b>	APP CRS <b>131°</b>	Rwy Idg TDZE Apt Elev	<b>3599</b> <b>1650</b> <b>1650</b>
--	------------------------	-----------------------------	---

# RNAV (GPS) RWY 13

MOHALL MUNI (HBC)

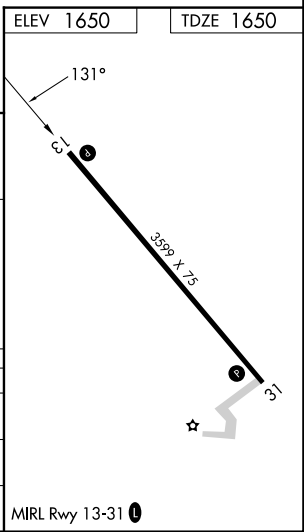
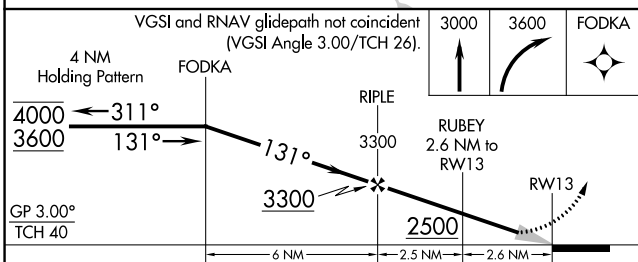
RNP APCH - GPS.		MISSED APPROACH: Climb to 3000 then climbing right turn to 3600 direct FODKA and hold.
▼ ▲ NA	Use Minot Intl altimeter setting.	
MOT ASOS <b>118.725</b>	MINOT APP CON ★ <b>119.6 363.8</b>	UNICOM <b>122.8 (CTAF) 0</b>



NC-1, 28 NOV 2024 to 26 DEC 2024

NC-1, 28 NOV 2024 to 26 DEC 2024

ELEV 1650	TDZE 1650
-----------	-----------



CATEGORY	A	B	C	D
LPV DA	1977-1 327 (400-1)			NA
LNAV MDA	2100-1	450 (500-1)	2100-1 3/8 450 (500-1 3/8)	NA
CIRCLING	2220-1	570 (600-1)	2380-2 730 (800-2)	NA