

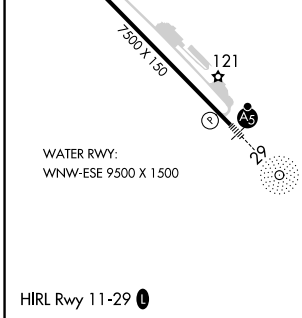
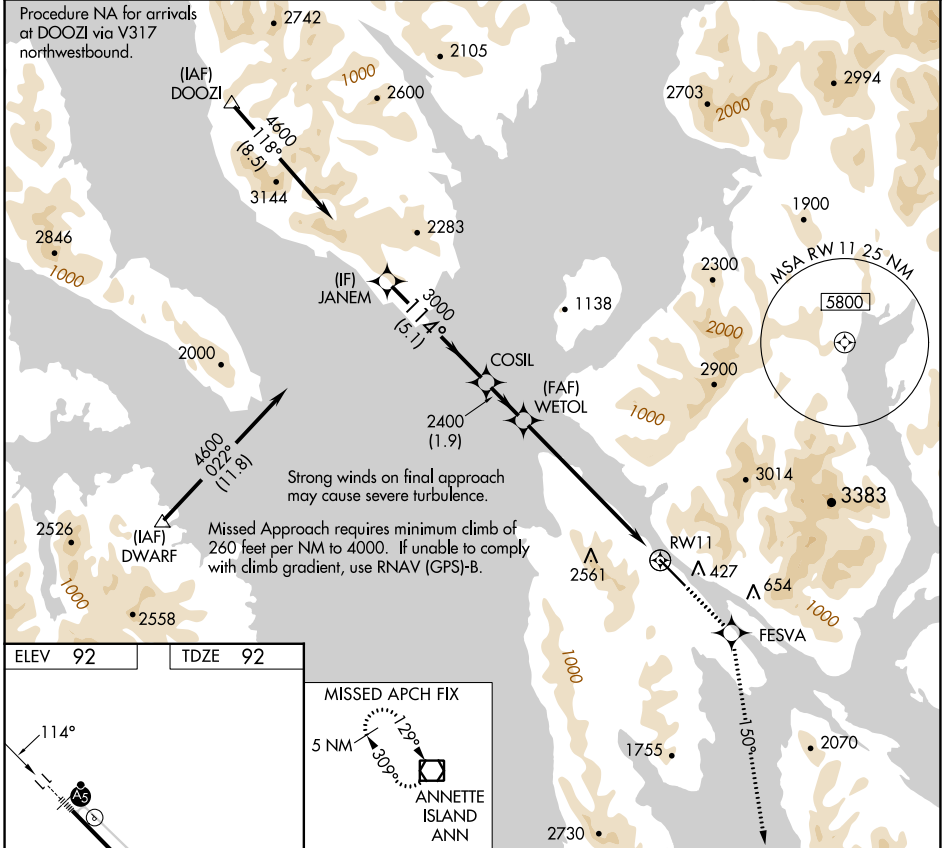
WAAS CH 58009 W11A	APP CRS 114°	Rwy Idg TDZE Apt Elev	7500 92 92
--	------------------------	-----------------------------	---------------------------------------

RNAV (GPS) RWY 11

KETCHIKAN INTL (KTN)(PAKT)

RNP APCH-GPS.	MALSR	MISSED APPROACH: Climb to 5000 direct FESVA and on 150° track to ANN VOR/DME and hold.
NA For inoperative ALS, increase LPV DA visibility to RVR 6000.	AS	

AFIS 134.45	ANCHORAGE CENTER 118.5 284.6	KETCHIKAN RADIO 123.6 (CTAF)
-----------------------	--	--



ELEV 92	TDZE 92	MISSED APCH FIX						
<p>WATER RWY: WNW-ESE 9500 X 1500</p> <p>HIRL Rwy 11-29</p>		<p>ANNETTE ISLAND ANN</p> <p>5 NM</p> <p>120°</p> <p>3000'</p>						
Procedure	Turn NA	JANEM	COSIL	WETOL	5000	FESVA	150° tr	ANN
<p>GP 3.00° TCH 50</p>		4600	3000	2400	2400			
		5.1 NM	1.9 NM	6.8 NM				
CATEGORY		A	B	C				D
LPV DA		442/40			350 (400- $\frac{3}{4}$)			NA

AK, 31 OCT 2024 to 26 DEC 2024

AK, 31 OCT 2024 to 26 DEC 2024