

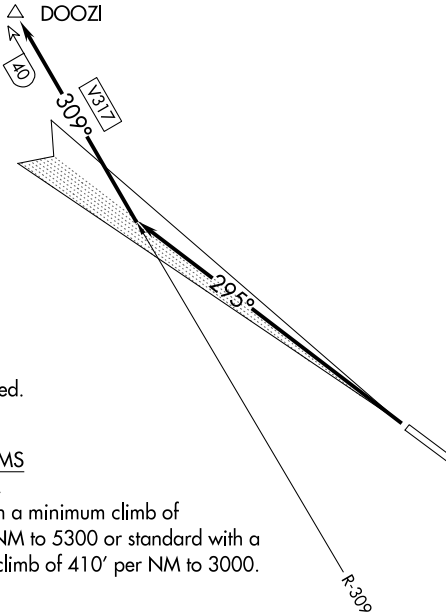
(SKOWL2.DOOZI) 24137

SKOWL TWO DEPARTURE (OBSTACLE)

AL-6053 (FAA)

KETCHIKAN INTL (KTN)(PAKT)
KETCHIKAN, ALASKA

ANCHORAGE CENTER
118.5 284.6
KETCHIKAN RADIO
123.6 (CTAF)



LOCALIZER 109.3
I-ECH
Chan 30

ANNETTE ISLAND
117.1 ANN
Chan 118

NOTE: DME required.

TAKEOFF MINIMUMS

Rwy 11: NA - ATC.

Rwy 29: 800-3 with a minimum climb of 275' per NM to 5300 or standard with a minimum climb of 410' per NM to 3000.

TAKEOFF OBSTACLE NOTES

- Rwy 29: Trees beginning 428' from DER, 549' left of centerline, up to 121' MSL.
- Trees beginning 671' from DER, 572' left of centerline, up to 135' MSL.
- Tree 2370' from DER, 1093' left of centerline, 147' MSL.
- Tree 2728' from DER, 989' left of centerline, 154' MSL.
- Trees beginning 2787' from DER, 1089' left of centerline, up to 164' MSL.
- Tree 3059' from DER, 1264' left of centerline, 188' MSL.
- Trees beginning 3195' from DER, 971' left of centerline, up to 194' MSL.
- Trees beginning 3558' from DER, 1125' left of centerline, up to 220' MSL.
- Trees beginning 3658' from DER, 1243' left of centerline, up to 234' MSL.
- Trees beginning 3754' from DER, 840' left of centerline, up to 238' MSL.
- Trees beginning 5550' from DER, 1591' left of centerline, up to 250' MSL.
- Tree 6050' from DER, 1934' left of centerline, 252' MSL.
- Trees beginning 6070' from DER, 1883' left of centerline, up to 284' MSL.
- Tree 1.9 NM from DER, 3275' left of centerline, 390' MSL.
- Tree 2 NM from DER, 3284' left of centerline, 415' MSL.
- Tree 2 NM from DER, 3381' left of centerline, 462' MSL.
- Tree 2.2 NM from DER, 4085' left of centerline, 100' AGL/576' MSL.
- Trees beginning 2.2 NM from DER, 2371' left of centerline, up to 607' MSL.
- Trees beginning 2.3 NM from DER, 3644' left of centerline, up to 100' AGL/622' MSL.
- Trees beginning 2.3 NM from DER, 2461' left of centerline, up to 640' MSL.
- Trees beginning 2.3 NM from DER, 2432' left of centerline, up to 647' MSL.
- Tree 2.3 NM from DER, 4153' left of centerline, 100' AGL/658' MSL.
- Trees beginning 2.3 NM from DER, 2171' left of centerline, up to 783' MSL.
- Trees beginning 2.4 NM from DER, 2456' left of centerline, up to 866' MSL.

NOTE: Chart not to scale.

DEPARTURE ROUTE DESCRIPTION

TAKEOFF RUNWAY 29: Climb to assigned altitude on I-ECH localizer NW course (295°) to intercept/join ANN VOR/DME R-309/V317 to DOOZI/40 DME before proceeding on course.

SKOWL TWO DEPARTURE (OBSTACLE)

(SKOWL2.DOOZI) 19JUL18

KETCHIKAN, ALASKA
KETCHIKAN INTL (KTN)(PAKT)

AK, 31 OCT 2024 to 26 DEC 2024

AK, 31 OCT 2024 to 26 DEC 2024