

VORTAC EIC 117.4 Chan 121	APP CRS 099°	Rwy Idg TDZE Apt Elev N/A N/A 278
----------------------------------------	------------------------	-----------------------------------------------------------------------

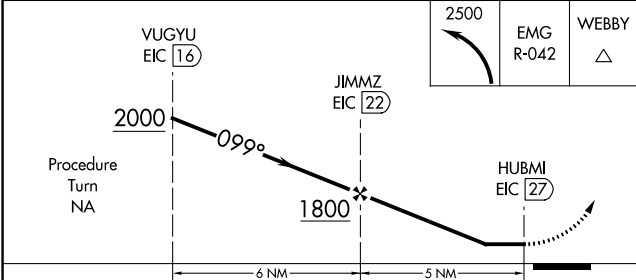
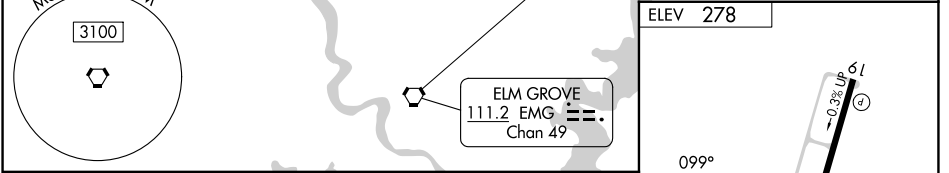
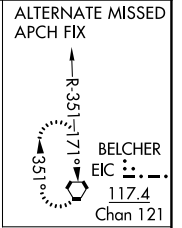
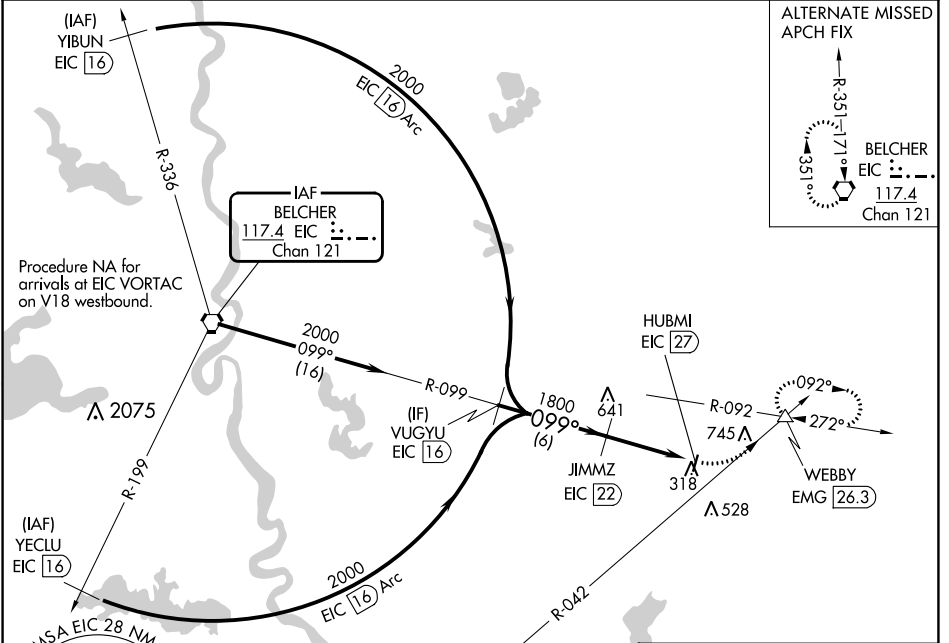
VOR/DME-A

MINDEN (MNE)

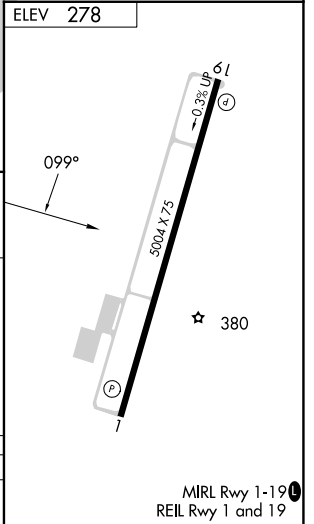
⚠ When VGSI inoperative, procedure NA at night. When local altimeter setting not received, use Barksdale AFB altimeter setting. Visibility reduction by helicopters NA.

MISSED APPROACH: Climbing left turn to 2500 and EMG VORTAC R-042 to WEBBY INT/EMG 26.3 DME and hold.

AWOS-3PT 119.325	SHREVEPORT APP CON 123.75 360.725	GCO 135.075	UNICOM 122.8 (CTAF)
----------------------------	---------------------------------------------	-----------------------	-------------------------------



CATEGORY	A	B	C	D
CIRCLING	1540-1¼ 1262 (1300-1¼)	1540-1½ 1262 (1300-1½)	1540-3	1262 (1300-3)



SC-4, 28 NOV 2024 to 26 DEC 2024

SC-4, 28 NOV 2024 to 26 DEC 2024