

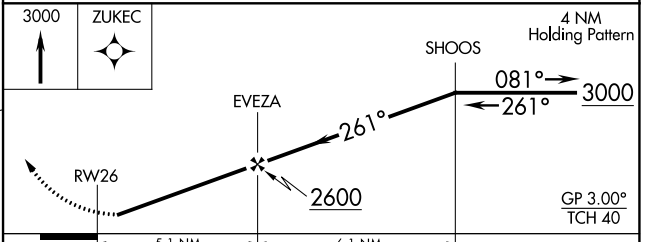
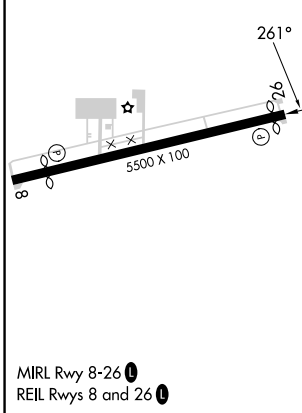
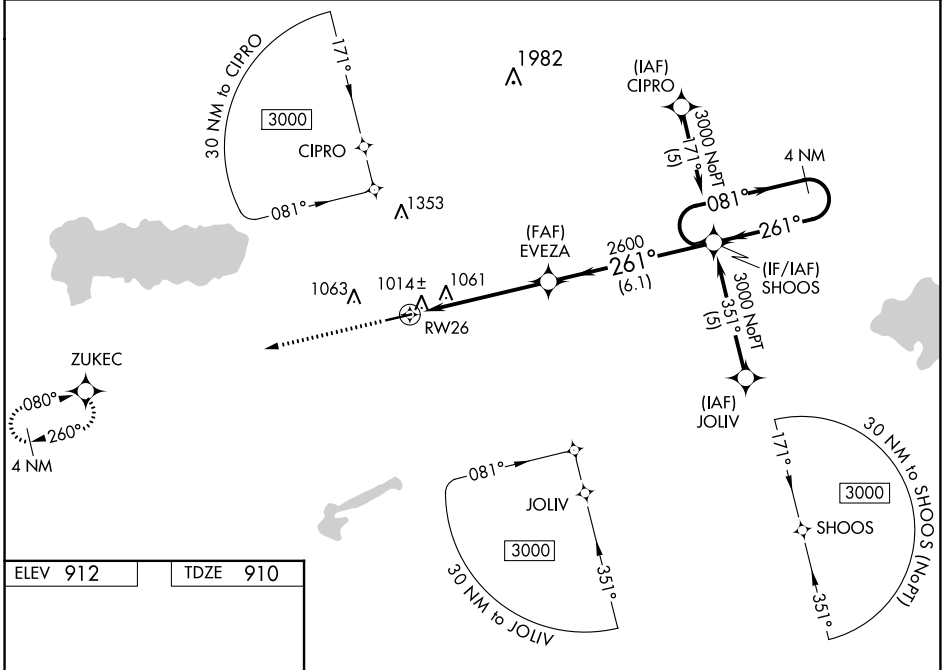
WAAS CH <b>72907</b> <b>W26A</b>	APP CRS <b>261°</b>	Rwy Idg <b>5263</b> TDZE <b>910</b> Apt Elev <b>912</b>
--	------------------------	---

# RNAV (GPS) RWY 26

NEIL ARMSTRONG (AXV)

RNP APCH - GPS.	<p><b>Baro-VNAV NA</b> when using Lima altimeter setting. For uncompensated Baro-VNAV systems, LNAV/VNAV NA below -16°C or above 54°C. Rwy 26 helicopter visibility reduction below 1 SM NA. When local altimeter setting not received, use Lima altimeter setting and increase LPV DA to 1291 feet and all visibilities 1/8 SM. Increase LNAV/VNAV DA to 1324 feet and all visibilities 1/8 SM. Increase all MDAs 60 feet and LNAV visibility Cat C 1/4 SM.</p>	<p><b>MISSED APPROACH:</b> Climb to 3000 direct ZUKEC and hold.</p>
-----------------	--	---

AWOS-3PT <b>128.325</b>	COLUMBUS APP CON <b>134.45 294.5</b>	UNICOM <b>122.8</b> (CTAF)	<b>122.7</b> <b>0</b>
----------------------------	---	-------------------------------	-----------------------



CATEGORY	A	B	C	D
LPV DA	1241-1 1/4	331 (400-1 1/4)		NA
LNAV/VNAV DA	1274-1 1/4	364 (400-1 1/4)		NA
LNAV MDA	1440-1	530 (600-1)	1440-1 1/2 530 (600-1 1/2)	NA

EC-2, 28 NOV 2024 to 26 DEC 2024

EC-2, 28 NOV 2024 to 26 DEC 2024

MIRL Rwy 8-26 **0**  
REIL Rwys 8 and 26 **0**