

APP CRS	Rwy Idg	2800
177°	TDZE	1051
	Apt Elev	1051

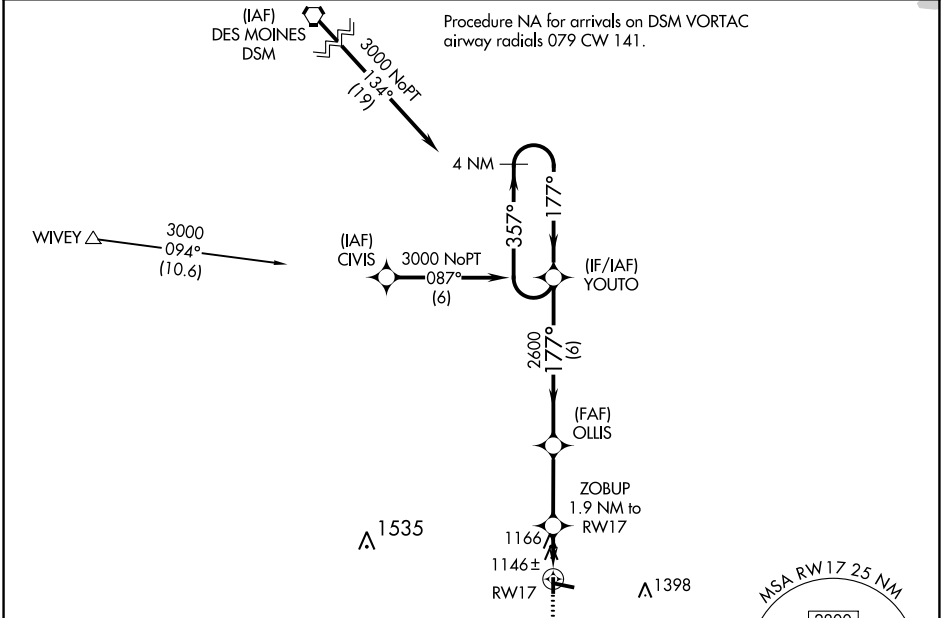
RNAV (GPS) RWY 17

CHARITON MUNI (CNC)

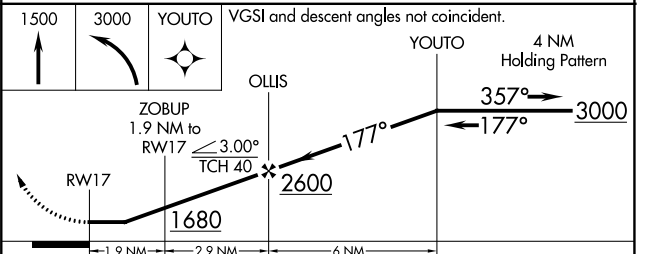
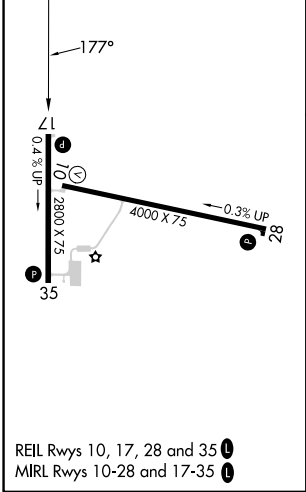
⚠ DME/DME RNP-0.3 NA. Helicopter visibility reduction below 1 SM NA. When local altimeter setting not received, use Lamoni altimeter setting and increase all MDA 100 feet. Procedure NA at night.

⚠ MISSED APPROACH: Climb to 1500 then climbing left turn to 3000 direct YOUTO and hold.

AWOS-3 125.525	DES MOINES APP CON 123.9 360.7	UNICOM 122.8 (CTAF)
--------------------------	--	-------------------------------



ELEV	1051	TDZE	1051
------	------	------	------



CATEGORY	A	B	C	D
LNAV MDA	1400-1	349 (400-1)		NA
CIRCLING	1540-1	489 (500-1)		NA

NC-3, 28 NOV 2024 to 26 DEC 2024

NC-3, 28 NOV 2024 to 26 DEC 2024