

WAAS CH <b>57903</b> <b>W08A</b>	APP CRS <b>083°</b>	Rwy Idg TDZE Apt Elev	<b>5102</b> <b>3260</b> <b>3279</b>
--	------------------------	-----------------------------	---

# RNAV (GPS) RWY 8

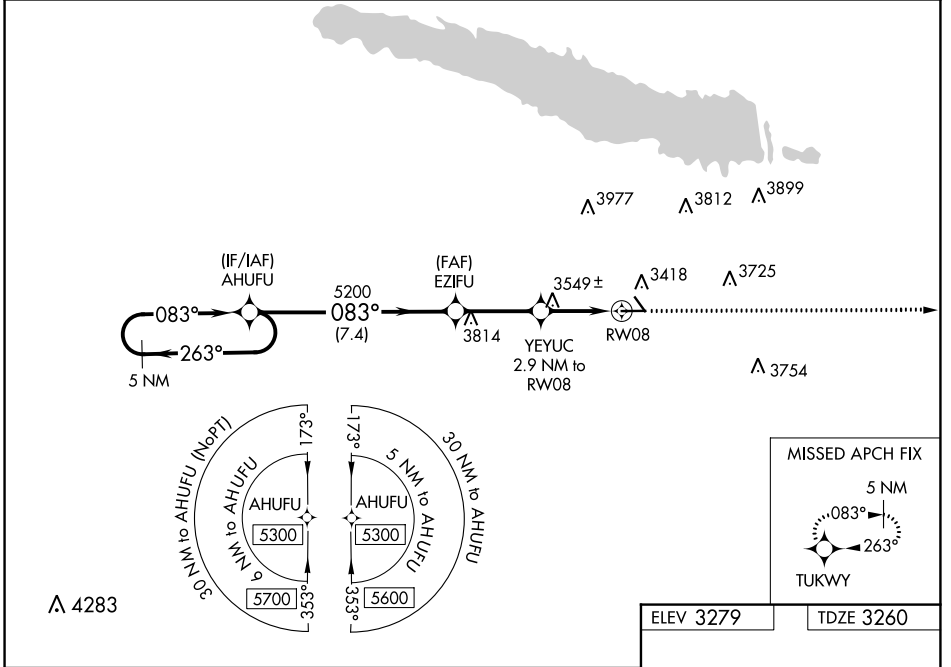
SEARLE FLD (OGA)

RNP APCH.

**▽** For uncompensated Baro-VNAV systems, LNAV/VNAV NA below -21°C or above 54°C. When local altimeter setting not received, use Imperial altimeter setting and increase all DA 86 feet and all MDA 100 feet, increase LPV all Cats visibility 1/8 SM, LNAV/VNAV all Cats and Circling Cat B visibility 1/4 SM. Baro-VNAV NA when using Imperial altimeter setting.

**▲** MISSED APPROACH: Climb to 5200 direct TUKWY and hold.

AWOS-3 <b>121.275</b>	DENVER CENTER <b>132.7 397.85</b>	UNICOM <b>122.8 (CTAF) 0</b>
--------------------------	--------------------------------------	---------------------------------



NC-2, 28 NOV 2024 to 26 DEC 2024

NC-2, 28 NOV 2024 to 26 DEC 2024

5 NM Holding Pattern AHUFU		5200	TUKWY
5300 ← 263° 083° →		EZIFU 5200	* LNAV only.
GP 3.00° TCH 40		YEYUC 2.9 NM to RW08	RW08
7.4 NM		3.1 NM	2.9 NM
CATEGORY	A	B	C
LPV DA	3510-1	250 (300-1)	NA
LNAV/VNAV DA	3865-2¼	605 (600-2¼)	NA
LNAV MDA	3800-1	540 (600-1)	NA
CIRCLING	3940-1 661 (700-1)	4000-1 721 (800-1)	NA

ELEV 3279 | TDZE 3260