

VOR/DME SAE 110.2 Chan 39	APP CRS 266°	Rwy Idg TDZE Apt Elev 5102 3254 3279
---	------------------------	--

VOR RWY 26

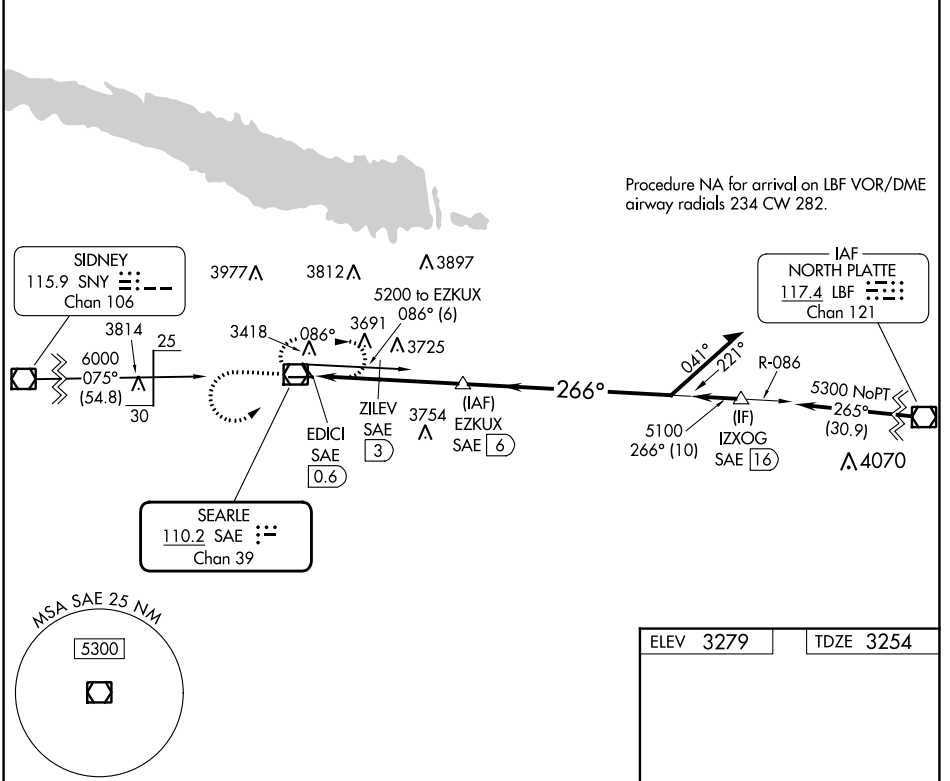
SEARLE FLD (OGA)

DME required.

▽
▲

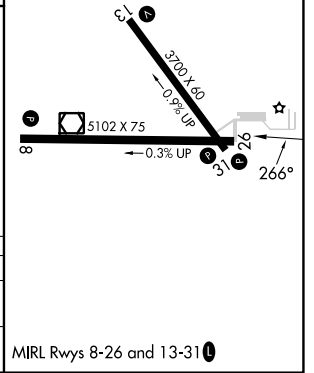
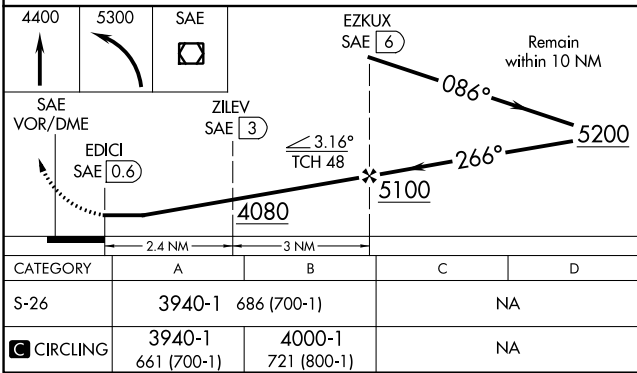
MISSED APPROACH: Climb to 4400 then climbing left turn to 5300 direct SAE VOR/DME and hold, continue climb-in-hold to 5300.

AWOS-3 121.275	DENVER CENTER 132.7 397.85	UNICOM 122.8 (CTAF) 0
--------------------------	--------------------------------------	---------------------------------



NC-2, 28 NOV 2024 to 26 DEC 2024

NC-2, 28 NOV 2024 to 26 DEC 2024



CATEGORY	A	B	C	D
S-26	3940-1	686 (700-1)		NA
C CIRCLING	3940-1 661 (700-1)	4000-1 721 (800-1)		NA

MIRL Rwy 8-26 and 13-31 **0**