

LOC/DME I-SMA 109.1 Chan 28	APP CRS 170°	Rwy Idg TDZE Apt Elev	6008 302 312
--	------------------------	-----------------------------	---

LOC RWY 17

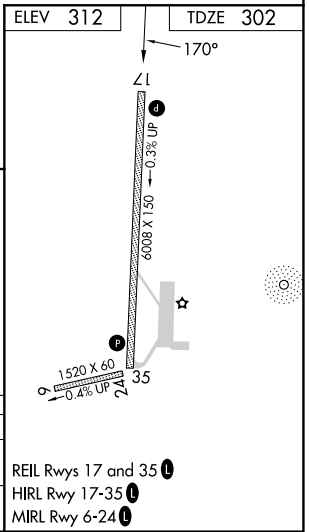
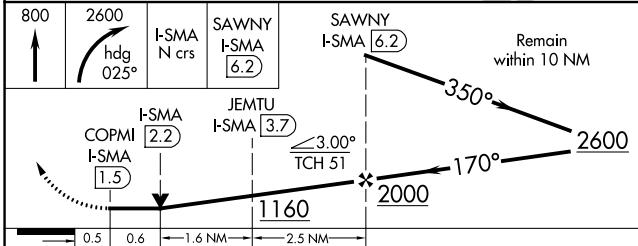
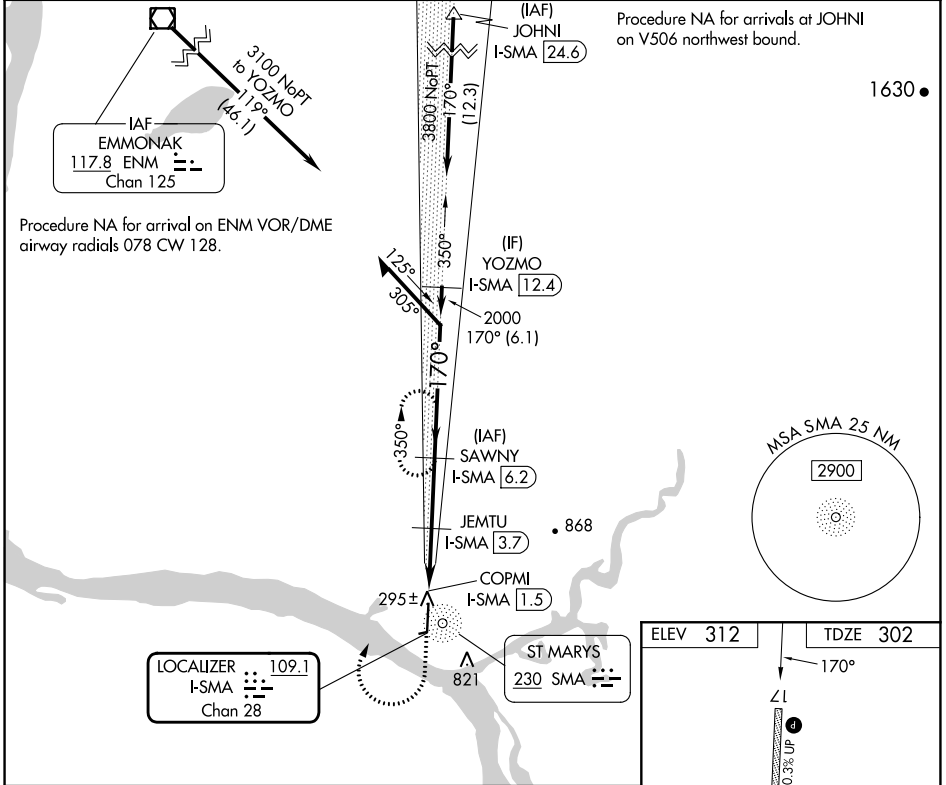
ST MARY'S (KSM)(PASM)

DME required.

▼ Circling NA east of Rwy 17-35. Inop table does not apply to Cats A and B. For inop ALS, increase Cat C/D visibility to 1 1/8 SM.

▲ MISSED APPROACH: Climb to 800 then climbing right turn to 2600 on heading 025° and on I-SMA north course to SAWNY/I-SMA 6.2 DME and hold, continue climb-in-hold to 2600.

AWOS-3P 128.7	ANCHORAGE CENTER 124.0	CTAF 122.3
-------------------------	----------------------------------	----------------------



CATEGORY	A	B	C	D
S-17	700-1 398 (400-1)			
C CIRCLING	820-1 508 (600-1)	820-1 1/2 508 (600-1 1/2)	880-2 568 (600-2)	

AK, 31 OCT 2024 to 26 DEC 2024

AK, 31 OCT 2024 to 26 DEC 2024