

KARRR SEVEN DEPARTURE (RNAV)  
(KARRR7 .KARRR) 29DEC22

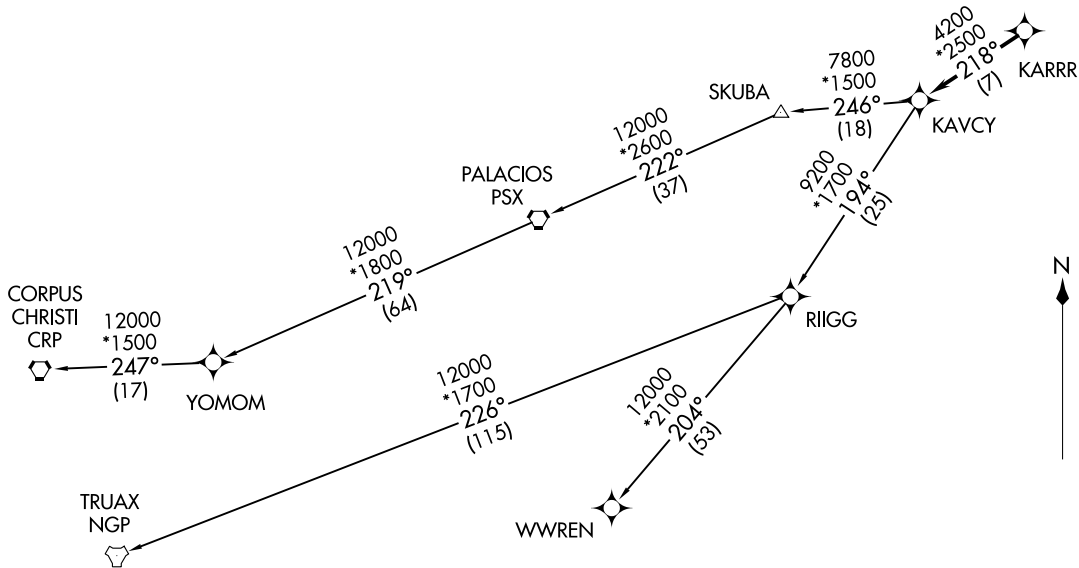
AWOS-3  
119.325  
CTAF  
123.0  
HOUSTON DEP CON  
119.7 281.4

RNAV-1 DME/DME/IRU or GPS.  
RADAR required.

TOP ALTITUDE:  
ASSIGNED BY ATC

TAKEOFF MINIMUMS

Rwy 16: Standard with minimum climb of 500' per NM to 660.  
Rwy 34: Standard with minimum climb of 500' per NM to 1000.



(NARRATIVE ON FOLLOWING PAGE)

NOTE: Chart not to scale.

(KARRR7 .KARRR) 22363  
KARRR SEVEN DEPARTURE (RNAV)

AL-6073 (FAA)

CLEVELAND MUNI (6R3)  
CLEVELAND, TEXAS

CLEVELAND, TEXAS  
CLEVELAND MUNI (6R3)

# KARRR SEVEN DEPARTURE (RNAV)



## DEPARTURE ROUTE DESCRIPTION

TAKEOFF RUNWAY 16: Climb on heading 157° to 1400, for RADAR vectors to KARRR, thence. . . .

TAKEOFF RUNWAY 34: Climb on heading 337° to 2000, for RADAR vectors to KARRR, thence. . . .

. . . .on track 218° to KAVCY, then on (transition). Maintain ATC assigned altitude. Expect filed altitude 10 minutes after departure.

CORPUS CHRISTI TRANSITION (KARRR7.CRP)

PALACIOS TRANSITION (KARRR7.PSX)

TRUAX TRANSITION (KARRR7.NGP)

WWREN TRANSITION (KARRR7.WWREN)

YOMOM TRANSITION (KARRR7.YOMOM)

SC-5, 28 NOV 2024 to 26 DEC 2024

SC-5, 28 NOV 2024 to 26 DEC 2024