

# STRYA EIGHT DEPARTURE (RNAV)

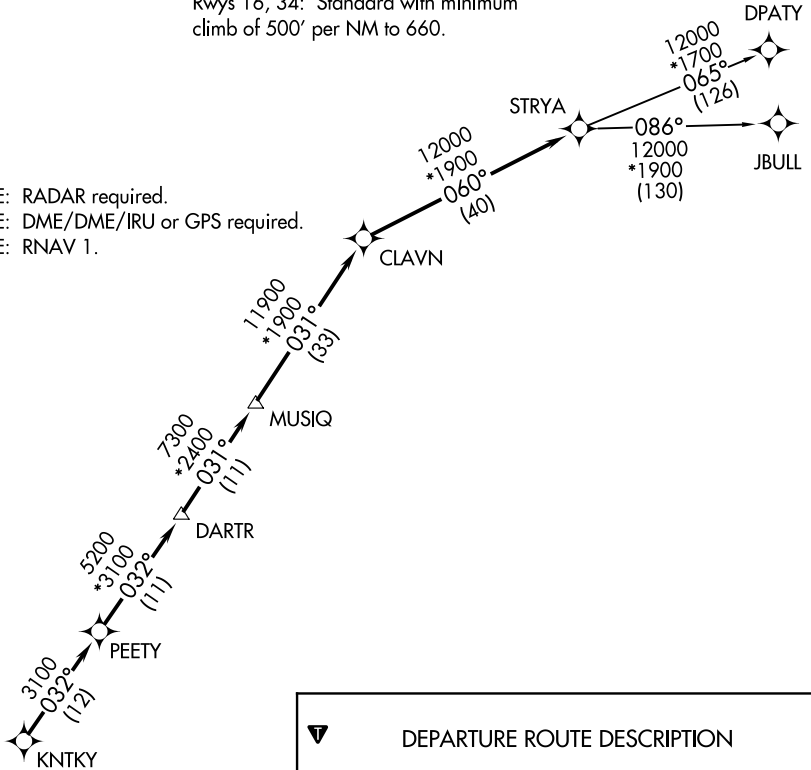
**TOP ALTITUDE: ASSIGNED BY ATC**

AWOS-3  
119.325  
CTAF  
123.0  
HOUSTON DEP CON  
119.7 281.4

### TAKEOFF MINIMUMS

Rwys 16, 34: Standard with minimum climb of 500' per NM to 660.

- NOTE: RADAR required.
- NOTE: DME/DME/IRU or GPS required.
- NOTE: RNAV 1.



**DEPARTURE ROUTE DESCRIPTION**

**TAKEOFF RUNWAY 16:** Climb on heading 157° to 1400 for RADAR vectors to KNTKY, then. . . .

**TAKEOFF RUNWAY 34:** Climb on heading 312° to 2000 for RADAR vectors to KNTKY, then. . . .

. . . .on track 032° to PEETY, then on track 032° to DARTR, then on track 031° to MUSIQ, then on track 031° to CLAVN, then on track 060° to STRYA, then on (transition). Maintain ATC assigned altitude. Expect filed altitude 10 minutes after departure.

**DPATY TRANSITION (STRYA8.DPATY)**

**JBULL TRANSITION (STRYA8.JBULL)**



NOTE: Chart not to scale.

SC-5, 28 NOV 2024 to 26 DEC 2024

SC-5, 28 NOV 2024 to 26 DEC 2024

# STRYA EIGHT DEPARTURE (RNAV)

(STRYA8.STRYA) 07OCT21