

(STYCK8.STYCK) 21280

AL-6073 (FAA)

CLEVELAND MUNI (6R3)

STYCK EIGHT DEPARTURE (RNAV)

CLEVELAND, TEXAS

**TOP ALTITUDE:
ASSIGNED BY ATC**

AWOS-3

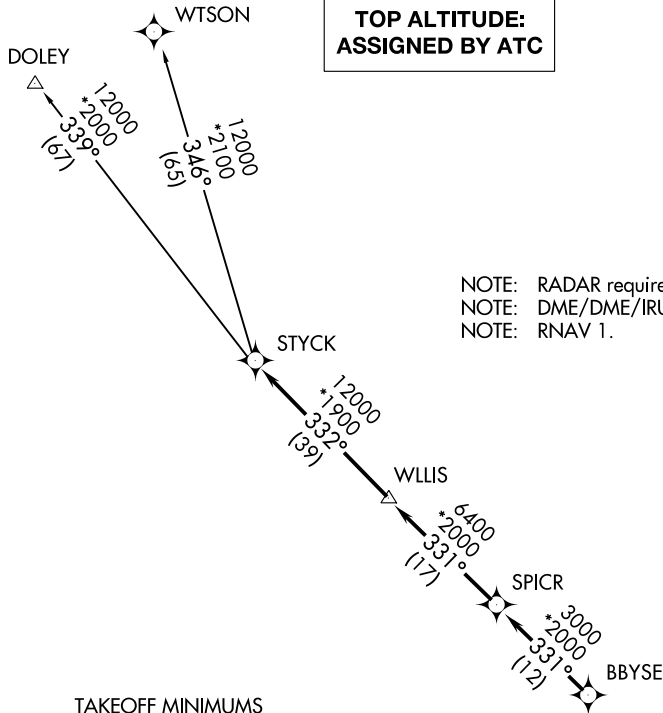
119.325

CTAF

123.0

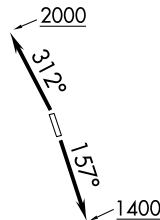
HOUSTON DEP CON

119.7 281.4



NOTE: RADAR required.
 NOTE: DME/DME/IRU or GPS required.
 NOTE: RNAV 1.

TAKEOFF MINIMUMS
 Rwy's 16, 34: Standard with minimum
 climb of 500' per NM to 660.



NOTE: Chart not to scale.

DEPARTURE ROUTE DESCRIPTION

TAKEOFF RUNWAY 16: Climb on heading 157° to 1400 for RADAR vectors to BBYSE, thence. . .

TAKEOFF RUNWAY 34: Climb on heading 312° to 2000 for RADAR vectors to BBYSE, thence. . .

. . . on track 331° to SPICR, then on track 331° to WLLIS, then on track 332° to STYCK, then on (transition). Maintain ATC assigned altitude. Expect filed altitude 10 minutes after departure.

DOLEY TRANSITION (STYCK8.DOLEY)

WTSON TRANSITION (STYCK8.WTSON)

STYCK EIGHT DEPARTURE (RNAV)

(STYCK8.STYCK) 07OCT21

CLEVELAND, TEXAS

CLEVELAND MUNI (6R3)

SC-5, 28 NOV 2024 to 26 DEC 2024

SC-5, 28 NOV 2024 to 26 DEC 2024