

LOC/DME I-LVK <b>110.5</b> Chan 42	APP CRS <b>255°</b>	Rwy ldg <b>5253</b>
	TDZE <b>400</b>	Apt Elev <b>400</b>

# ILS RWY 25R

LIVERMORE MUNI (LVK)

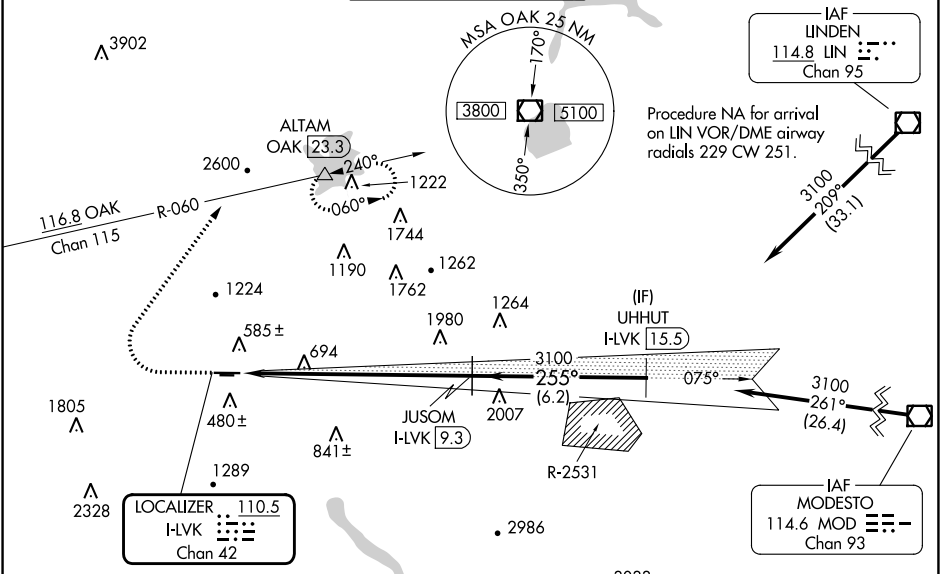
DME required.

**MALS**

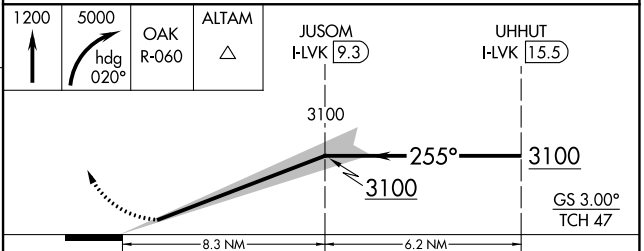
MISSED APPROACH: Climb to 1200 then climbing right turn to 5000 on heading 020° and OAK VOR/DME R-060 to ALTAM/OAK VOR/DME 23.3 DME and hold, continue climb-in-hold to 5000.

\*Missed approach requires a minimum climb of 358 feet per NM to 3600, if unable to meet climb gradient, see LOC RWY 25R.

ATIS <b>119.65</b>	NORCAL APP CON <b>123.85 278.3</b>	<b>LIVERMORE TOWER *</b> <b>118.1(CTAF) 239.25</b>	GND CON <b>121.6</b>	UNICOM <b>122.95</b>
-----------------------	---------------------------------------	---	-------------------------	-------------------------



ELEV 400	TDZE 400
----------	----------



HIRL Rwy 7L-25R  
MIRL Rwy 7R-25L

Diagram of HIRL and MIRL systems: HIRL Rwy 7L-25R, MIRL Rwy 7R-25L. Power: 5253 X 100, 2699 X 75.

CATEGORY	A	B	C	D
S-ILS 25R		600-½	200 (200-½)	

SW-2, 28 NOV 2024 to 26 DEC 2024

SW-2, 28 NOV 2024 to 26 DEC 2024