


WAAS CH <b>50214</b> <b>W25A</b>	APP CRS <b>255°</b>	Rwy Idg TDZE Apt Elev	<b>5253</b> <b>400</b> <b>400</b>
--	------------------------	-----------------------------	---

# RNAV (GPS) RWY 25R

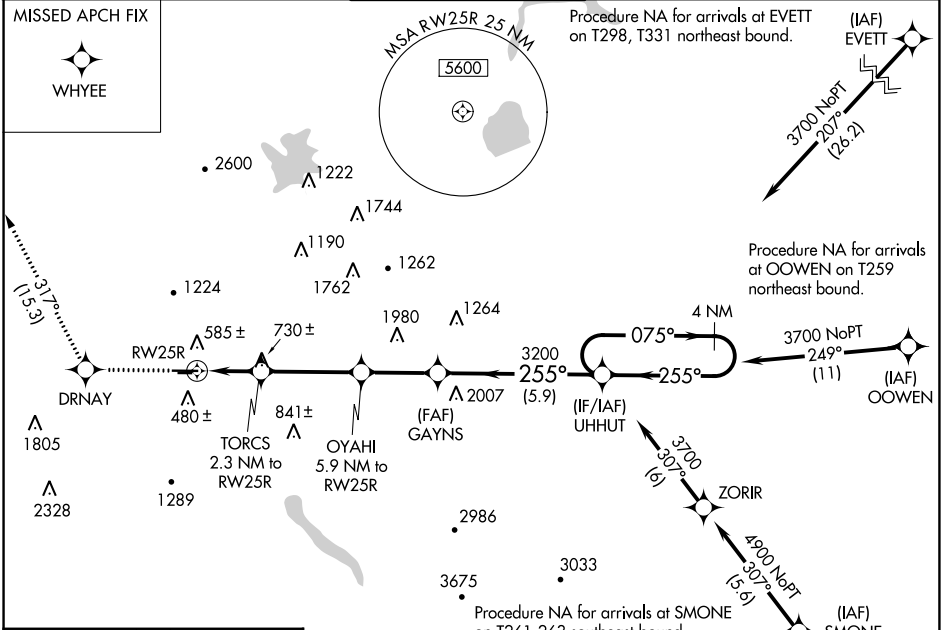
LIVERMORE MUNI (LVK)

**⚠** Circling to Rwy 25L NA at night. For uncompensated Baro-VNAV systems, LNAV/VNAV NA below -5°C (23°F) or above 54°C (130°F). Circling NA north of Rwy 7L-25R. RADAR Required. DME/DME RNP-0.3 NA. For inop ALS, increase LNAV Cat C/D to 1½ SM.

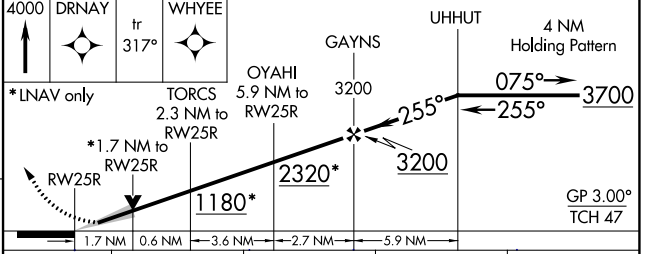
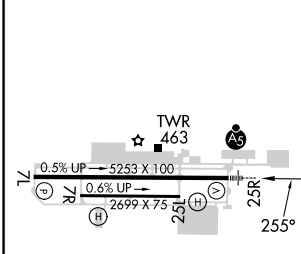
**MALSR**  


**MISSED APPROACH:** Climb to 4000 direct DRNAV and on track 317° to WHYEE.

ATIS <b>119.65</b>	NORCAL APP CON <b>123.85 278.3</b>	<b>LIVERMORE TOWER *</b> <b>118.1(CTAF) 239.25</b>	GND CON <b>121.6</b>	UNICOM <b>122.95</b>
-----------------------	---------------------------------------	---	-------------------------	-------------------------



ELEV 400	TDZE 400
----------	----------



CATEGORY	A	B	C	D
LPV DA		600-½	200 (200-½)	
LNAV/VNAV DA		843-⅞	443 (500-⅞)	
LNAV MDA	980-½	580 (600-½)	980-1¼	580 (600-1¼)
<b>C</b> CIRCLING	980-1	580 (600-1)	1140-2 740 (800-2)	1780-3 1380 (1400-3)

SW-2, 28 NOV 2024 to 26 DEC 2024

SW-2, 28 NOV 2024 to 26 DEC 2024