

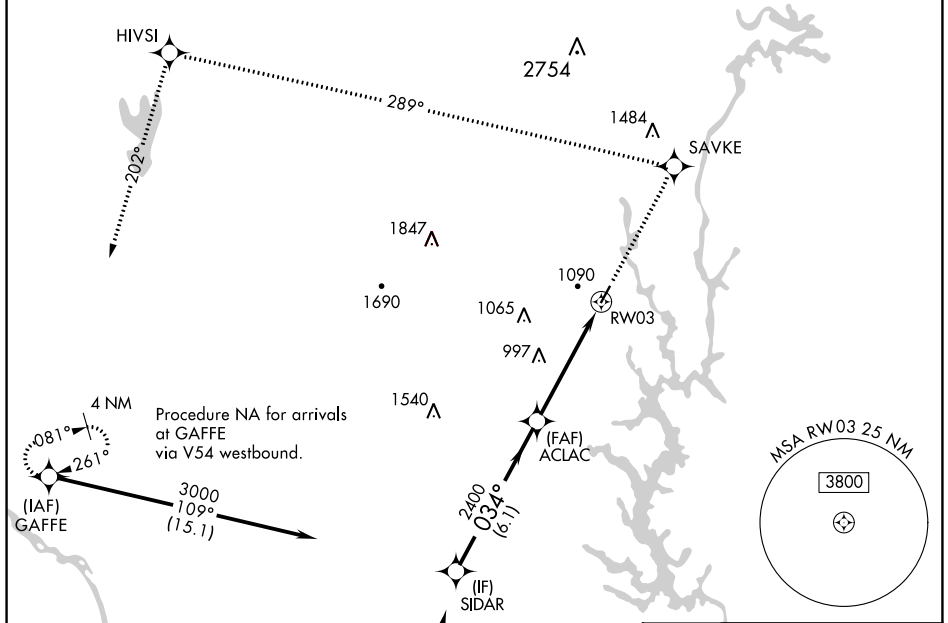
WAAS CH 90302 W03A	APP CRS 034°	Rwy Idg TDZE Apt Elev	3769 798 798
--	------------------------	-----------------------------	---

RNAV (GPS) RWY 3

GASTONIA MUNI (AKH)

RNP APCH. ▼ If local altimeter setting not received, use Charlotte Douglas Intl altimeter setting and increase all DAs/MDAs 40 feet. Inoperative table does not apply.	ODALS ☉ ⋮	MISSED APPROACH: Climb to 3200 direct SAVKE and via 289° track to HIVSI and 202° track to GAFFE and hold.
---	--------------	---

ASOS 135.725	CHARLOTTE APP CON 120.05 257.2	CLNC DEL 127.2	UNICOM 123.0 (CTAF) 0
------------------------	--	--------------------------	---------------------------------

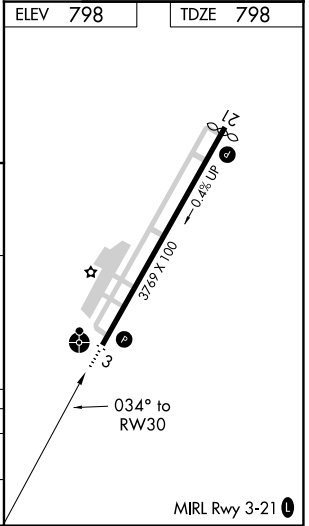


ELEV 798	TDZE 798
----------	----------

Procedure NA for arrivals at GAFFE via V54 westbound.

Procedure NA for arrivals at LOCKS via V454 southwest bound.

VGSI and RNAV glidepath not coincident (VGSI Angle 3.00/TCH 26).	3200 SAVKE	HIVSI	GAFFE
Procedure Turn NA	3000	tr 289°	tr 202°
GP 3.00° TCH 40	3000	2400	RWY 3
	6.1 NM	4.8 NM	
CATEGORY	A	B	C
LPV DA	1118-1¼	320 (400-1¼)	NA
LNAV MDA	1440-1	642 (700-1)	1440-1¾ 642 (700-1¾)



SE-2, 28 NOV 2024 to 26 DEC 2024

SE-2, 28 NOV 2024 to 26 DEC 2024