

LOC I-DSY 110.1 Chan 38	APP CRS 011°	Rwy Idg TDZE 253 Apt Elev 265
---	------------------------	---

ILS or LOC RWY 1

SEARCY RGNL (SRC)

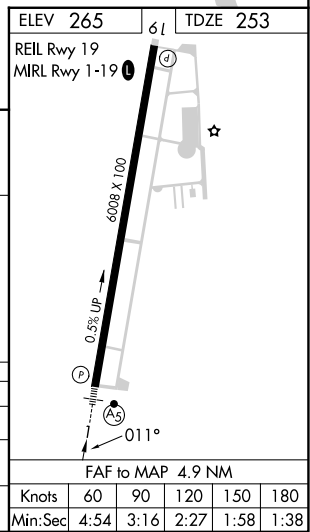
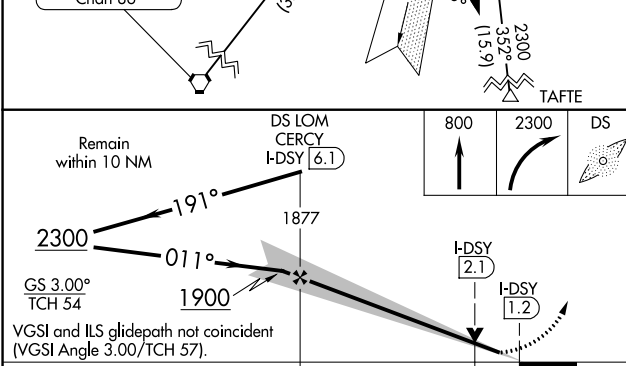
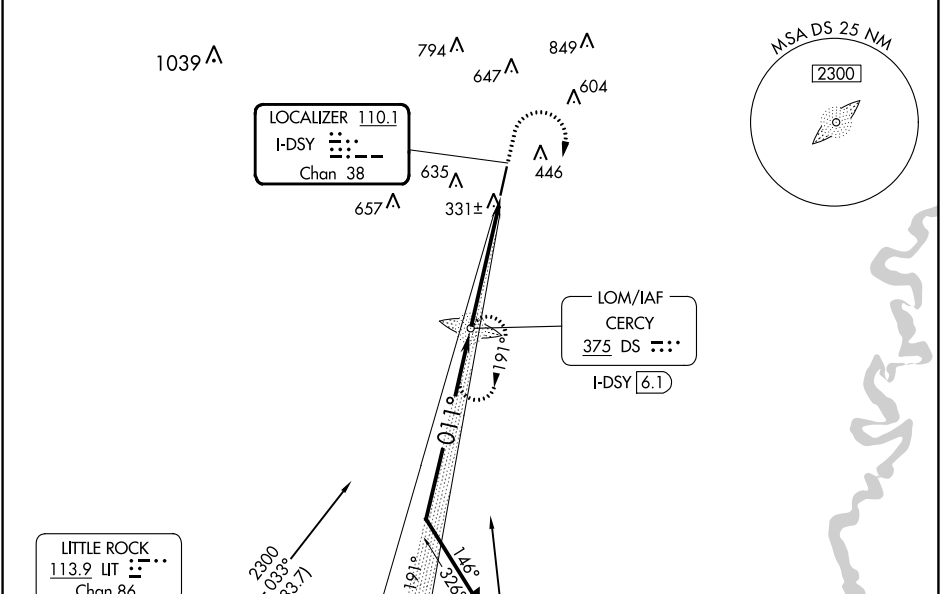
ADF required.

⚠ Circling NA for Cats B and C west of Rwy 1-19. VDP NA when using Bill and Hillary Clinton Nil/Adams Fld altimeter setting. When local altimeter setting not received, use Bill and Hillary Clinton Nil/Adams Fld altimeter setting: increase ILS DA to 542 feet; increase all MDAs 100 feet and S-LOC 1 Cat C and Circling Cat C visibility ¼ SM. For inop ALS, increase S-LOC 1 Cat C visibility to 1 SM.



MISSED APPROACH: Climb to 800 then climbing right turn to 2300 direct CERCY LOM and hold, continue climb-in-hold to 2300.

AWOS-3PT 128.325	LITTLE ROCK APP CON 119.75 291.775	CLNC DEL 119.75	UNICOM 122.7 (CTAF)
----------------------------	--	---------------------------	-------------------------------



CATEGORY	A	B	C	D
S-ILS 1	453-½	200 (200-½)		NA
S-LOC 1	600-½	347 (400-½)	600-⅝ 347 (400-⅝)	NA
CIRCLING	760-1	495 (500-1)	780-1½ 515 (600-1½)	NA

SC-1, 28 NOV 2024 to 26 DEC 2024

SC-1, 28 NOV 2024 to 26 DEC 2024