

WAAS CH 58338 W18A	APP CRS 181°	Rwy Idg 3202 TDZE 548 Apt Elev 551
--	------------------------	---

RNAV (GPS) RWY 18

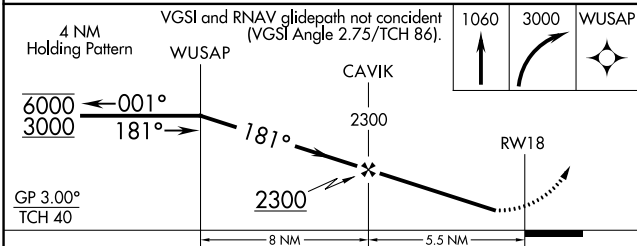
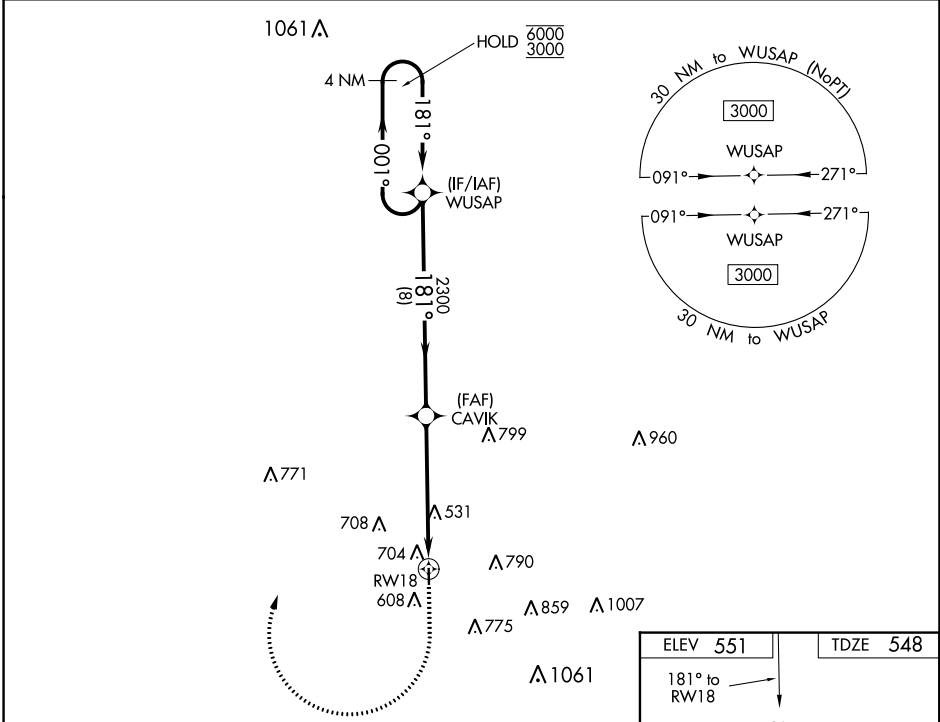
HOLLY SPRINGS-MARSHALL COUNTY (M41)

RNP APCH-GPS.

▼ Rwy 18 helicopter visibility reduction below $\frac{3}{4}$ SM NA. Baro-VNAV NA. Use Olive Branch altimeter setting; when not received, use Oxford altimeter setting and increase LPV DA to 870, and all visibilities $\frac{1}{8}$ SM; increase LNAV/VNAV DA to 957 and all MDAs 20 feet.

MISSED APPROACH:
Climb to 1060 then climbing right turn to 3000 direct WUSAP and hold.

OLV AWOS-3 119.925	MEMPHIS APP CON 125.8 338.3	UNICOM 122.8 (CTAF)
------------------------------	---------------------------------------	-------------------------------



ELEV 551	TDZE 548
181° to RW18	81
3202 X 60	1.1% UP
36	

CATEGORY	A	B	C	D
LPV DA	858-1 $\frac{1}{8}$	310 (400-1 $\frac{1}{8}$)		NA
LNAV/VNAV DA	945-1 $\frac{1}{2}$	397 (400-1 $\frac{1}{2}$)		NA
LNAV MDA	1020-1	472 (500-1)	1020-1 $\frac{3}{8}$ 472 (500-1 $\frac{3}{8}$)	NA
C CIRCLING	1080-1 529 (600-1)	1100-1 549 (600-1)	1260-2 709 (800-2)	NA

SC-4, 28 NOV 2024 to 26 DEC 2024

SC-4, 28 NOV 2024 to 26 DEC 2024