

WAAS CH <b>63238</b> <b>W36A</b>	APP CRS <b>001°</b>	Rwy Idg <b>3202</b> TDZE <b>551</b> Apt Elev <b>551</b>
--	------------------------	---

# RNAV (GPS) RWY 36

HOLLY SPRINGS-MARSHALL COUNTY (M41)

RNP APCH-GPS.

**▼** Baro-VNAV NA. Helicopter visibility reduction below 3/4 SM NA.  
**▲** NA Use Olive Branch altimeter setting; when not received, use Oxford altimeter setting and increase LPV DA to 873, LNAV/VNAV DA to 883 and all MDA 20 feet; increase LPV all Cats and LNAV Cat C visibility 1/8 mile.

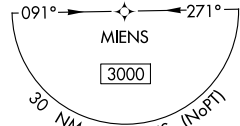
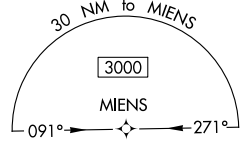
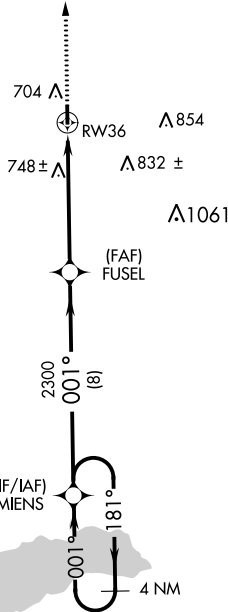
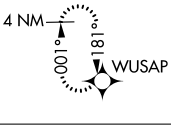
MISSED APPROACH: Climb to 3000 direct WUSAP and hold.

OLV AWOS-3  
**119.925**

MEMPHIS APP CON  
**125.8 338.3**

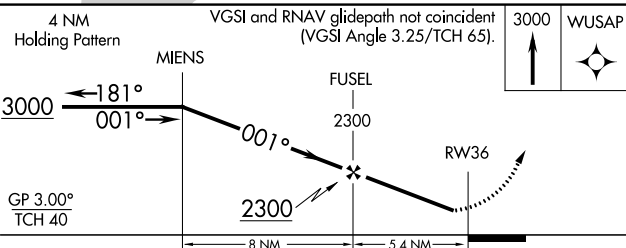
UNICOM  
**122.8** (CTAF)

MISSED APCH FIX



SC-4, 28 NOV 2024 to 26 DEC 2024

SC-4, 28 NOV 2024 to 26 DEC 2024



CATEGORY	A	B	C	D
LPV DA	861-1	310 (400-1)		NA
LNAV/VNAV DA	871-1 1/8	320 (400-1 1/8)		NA
LNAV MDA	1060-1	509 (600-1)	1060-1 3/8 509 (600-1 3/8)	NA
<b>C</b> CIRCLING	1080-1 529 (600-1)	1100-1 549 (600-1)	1260-2 709 (800-2)	NA

