

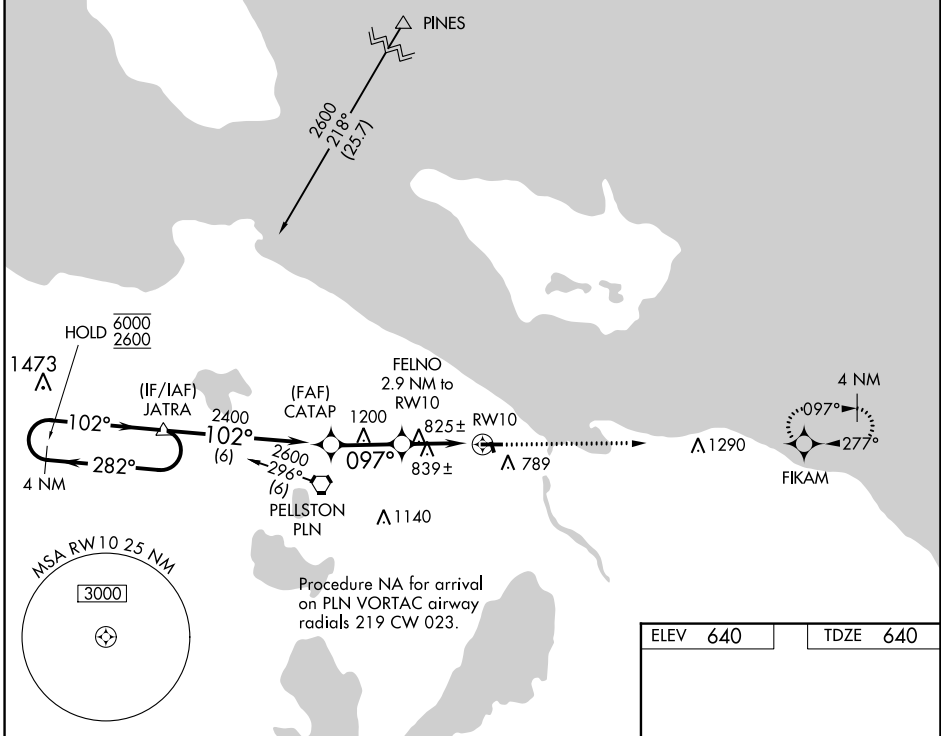
WAAS CH 50224 W10A	APP CRS 097°	Rwy Idg TDZE Apt Elev	4004 640 640
--	------------------------	-----------------------------	---

RNAV (GPS) RWY 10

CHEBOYGAN COUNTY (SLH)

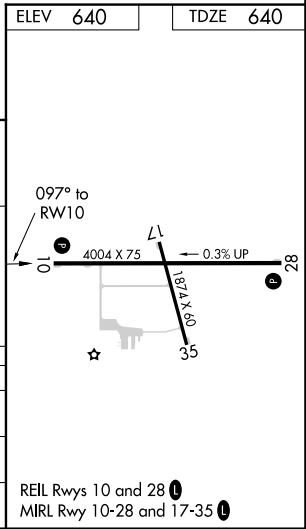
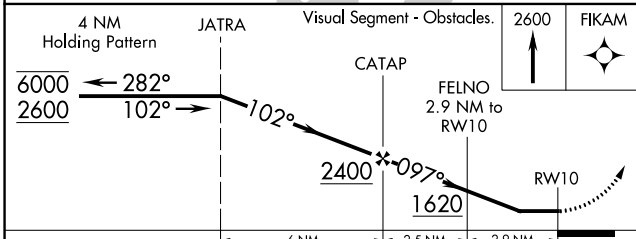
RNP APCH - GPS.	<p>MISSED APPROACH: Climb to 2600 direct FIKAM and hold.</p>
<p>▼ Rwy 10 helicopter visibility reduction below 1 SM NA. ▲ Procedure NA at night.</p>	

AWOS-3 118.175	MINNEAPOLIS CENTER 134.6 354.05	UNICOM 122.8 (CTAF)	122.5 0
--------------------------	---	-------------------------------	----------------



EC-1, 28 NOV 2024 to 26 DEC 2024

EC-1, 28 NOV 2024 to 26 DEC 2024



CATEGORY	A	B	C	D
LP MDA	1080-1	440 (500-1)	1080-1¼ 440 (500-1¼)	NA
LNAV MDA	1100-1	460 (500-1)	1100-1⅜ 460 (500-1⅜)	NA
C CIRCLING	1140-1	500 (500-1)	1140-1½ 500 (500-1½)	NA