

(CHIEF9.MCI) 23278

CHIEF NINE DEPARTURE

AL-6104 (FAA)

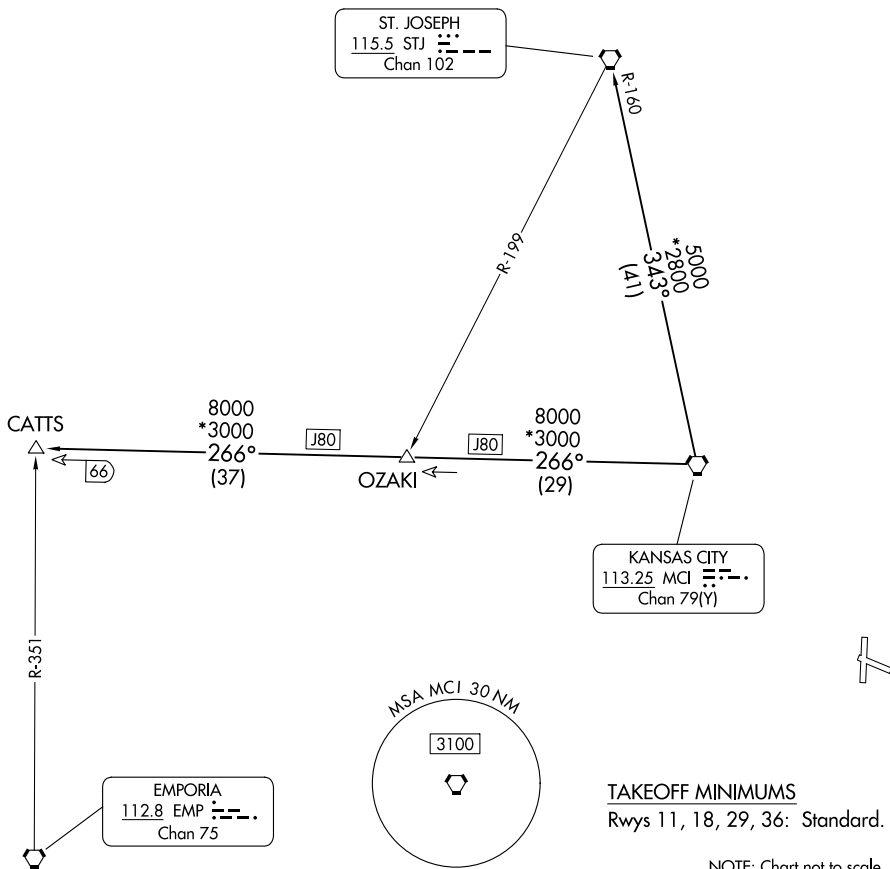
LEE'S SUMMIT MUNI (LXT)

LEE'S SUMMIT, MISSOURI

**TOP ALTITUDE:
10000**

RADAR required.

KANSAS CITY DEP CON
118.4 307.35
CLNC DEL
118.45



NC-3, 28 NOV 2024 to 26 DEC 2024

NC-3, 28 NOV 2024 to 26 DEC 2024



DEPARTURE ROUTE DESCRIPTION

TAKEOFF ALL RUNWAYS: Climb on assigned heading for RADAR vectors to appropriate route. Maintain 10000 or as assigned by ATC, expect filed altitude 10 minutes after departure.

CATTS TRANSITION (CHIEF9.CATTS): From over MCI VORTAC on MCI R-266 to CATTS.

ST. JOSEPH TRANSITION (CHIEF9.STJ): From over MCI VORTAC on MCI R-343 and STJ R-160 to STJ VORTAC.

CHIEF NINE DEPARTURE

(CHIEF9.MCI) 05OCT23

LEE'S SUMMIT, MISSOURI
LEE'S SUMMIT MUNI (LXT)