

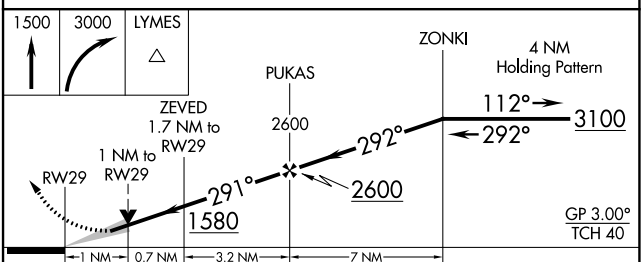
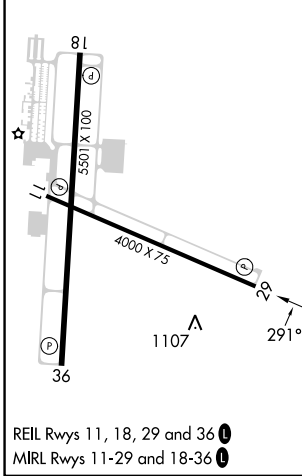
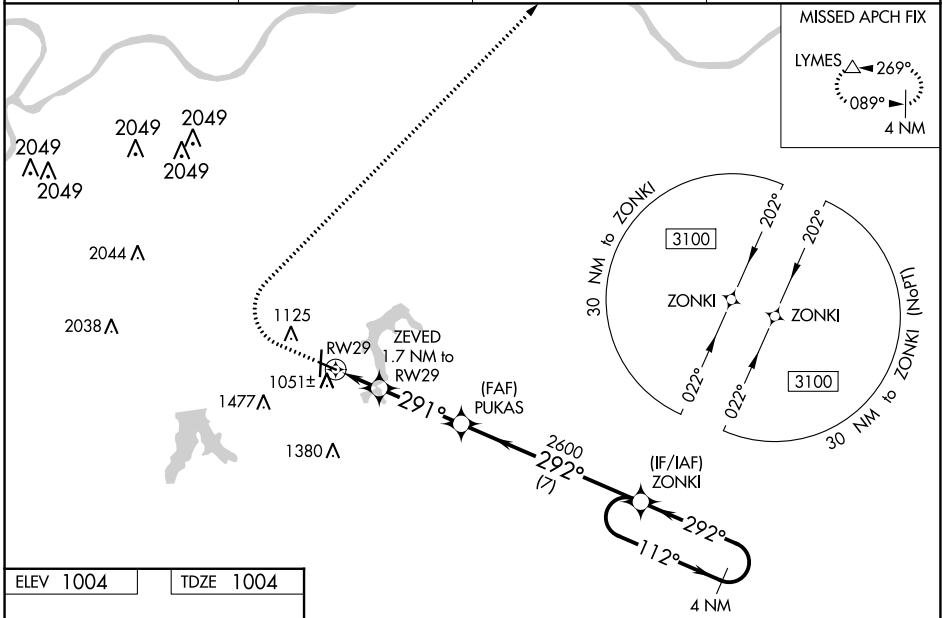
WAAS CH <b>48905</b> <b>W29A</b>	APP CRS <b>291°</b>	Rwy Idg TDZE <b>1004</b> Apt Elev <b>1004</b>
--	------------------------	---

# RNAV (GPS) RWY 29

LEE'S SUMMIT MUNI (LXT)

RNP APCH - GPS.	<p>▼ ▲ For uncompensated Baro-VNAV systems, LNAV/VNAV NA below -17°C or above 54°C. VDP and Baro-VNAV NA when using Charles B. Wheeler Downtown altimeter setting. When local altimeter setting not received, use Charles B. Wheeler Downtown altimeter setting: increase LPV DA to 1322 feet; increase LNAV/VNAV DA to 1359 feet; increase all MDA 80 feet and visibility Cats C and D 1/2 SM.</p>	MISSED APPROACH: Climb to 1500 then climbing right turn to 3000 direct LYMES and hold.
-----------------	---	--

ASOS <b>124,175</b>	KANSAS CITY APP CON <b>118,4 307,35</b>	CLNC DEL <b>118,45</b>	UNICOM <b>122,8 (CTAF) 0</b>
------------------------	--	---------------------------	---------------------------------



CATEGORY	A	B	C	D
LPV DA		1254-1	250 (300-1)	
LNAV/VNAV DA		1291-1	287 (300-1)	
LNAV MDA		1360-1	356 (400-1)	
<input checked="" type="checkbox"/> CIRCLING	1440-1 436 (500-1)	1540-1 536 (600-1)	1780-2¼ 776 (800-2¼)	1780-2½ 776 (800-2½)

NC-3, 28 NOV 2024 to 26 DEC 2024

NC-3, 28 NOV 2024 to 26 DEC 2024