

(WLDCT6.MCI) 23278

# WILDCAT SIX DEPARTURE

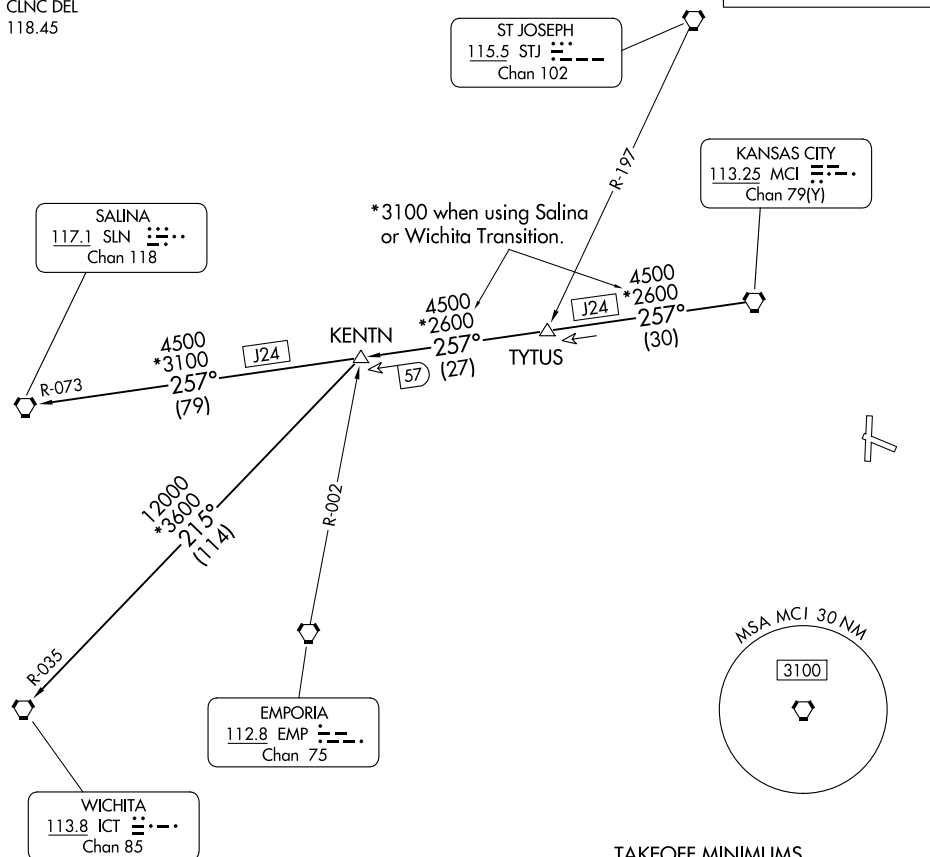
AL-6104 (FAA)

LEE'S SUMMIT MUNI (LXT)  
LEE'S SUMMIT, MISSOURI

KANSAS CITY DEP CON  
118.4 307.35  
CLNC DEL  
118.45

RADAR required.

**TOP ALTITUDE:  
10000**



NC-3, 28 NOV 2024 to 26 DEC 2024

NC-3, 28 NOV 2024 to 26 DEC 2024

NOTE: Chart not to scale.

**DEPARTURE ROUTE DESCRIPTION**

TAKEOFF ALL RUNWAYS: Climb on assigned heading for RADAR vectors to appropriate route. Maintain 10000, expect filed altitude 10 minutes after departure.

KENTN TRANSITION (WLDCT6.KENTN): From over MCI VORTAC on MCI R-257 to KENTN.

SALINA TRANSITION (WLDCT6.SLN): From over MCI VORTAC on MCI R-257 and SLN R-073 to SLN VORTAC.

WICHITA TRANSITION (WLDCT6.ICT): From over MCI VORTAC on MCI R-257 to KENTN, then on ICT R-035 to ICT VORTAC.

**WILDCAT SIX DEPARTURE**  
(WLDCT6.MCI) 05OCT23

LEE'S SUMMIT, MISSOURI  
LEE'S SUMMIT MUNI (LXT)