

APP CRS	Rwy Idg	3534
184°	TDZE	739
	Apt Elev	739

RNAV (GPS) RWY 18

ROMEO STATE (D98)

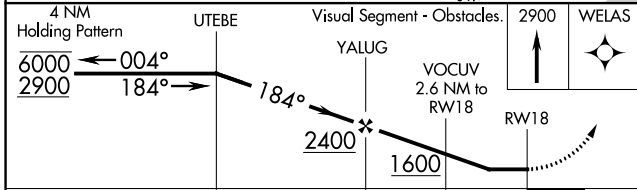
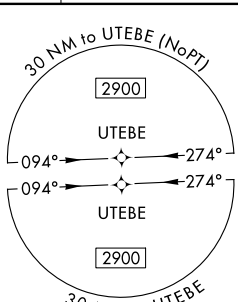
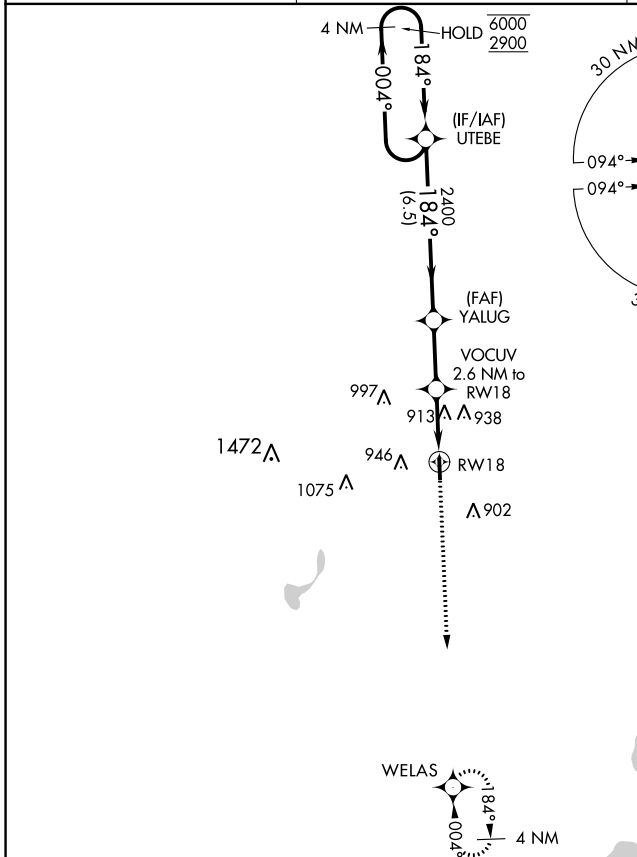
RNP APCH - GPS.

▼ Rwy 18 helicopter visibility reduction below 1 SM NA. Use Coleman A Young Muni altimeter setting. Straight-in and Circling Rwy 18 NA at night.

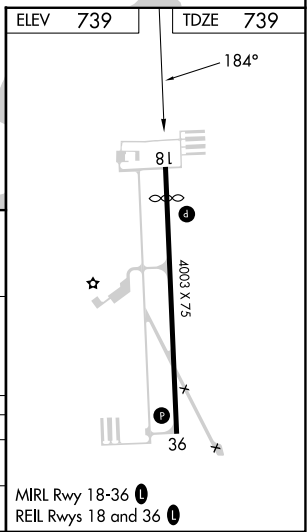
▲ NA

MISSED APPROACH: Climb to 2900 direct WELAS and hold.

DET ASOS 124.875	SELFRIDGE APP CON★ 119.6 391.9	UNICOM 122.8 (CTAF) ①
----------------------------	--	---------------------------------



CATEGORY	A	B	C	D
INAV MDA	1240-1	501 (600-1)	1240-1 $\frac{3}{8}$	501 (600-1 $\frac{3}{8}$)
CIRCLING	1300-1 561 (600-1)	1420-1 681 (700-1)	1420-2 681 (700-2)	1480-2 $\frac{1}{2}$ 741 (800-2 $\frac{1}{2}$)



EC-1, 28 NOV 2024 to 26 DEC 2024

EC-1, 28 NOV 2024 to 26 DEC 2024