

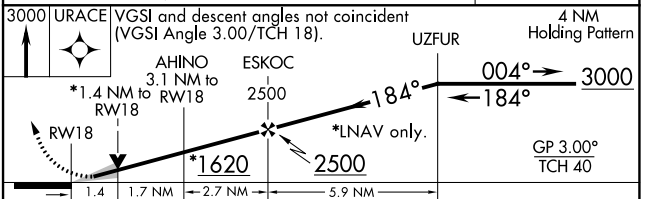
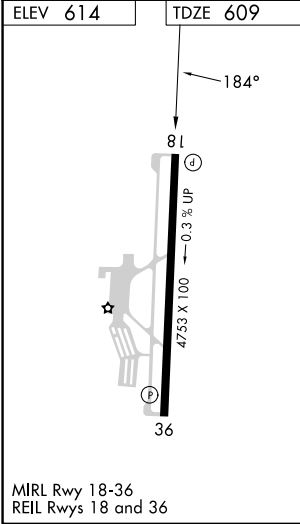
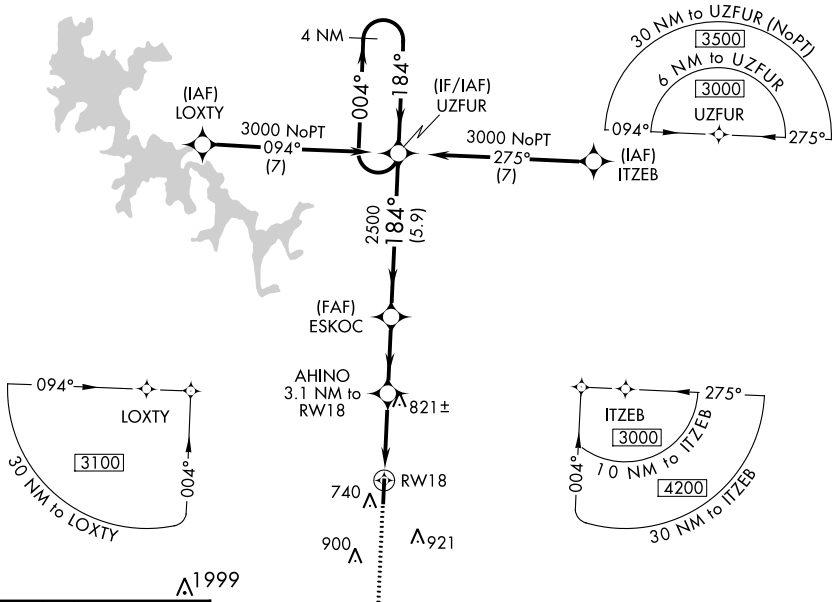
WAAS CH 48812 W18A	APP CRS 184°	Rwy Idg TDZE Apt Elev	4753 609 614
--	------------------------	-----------------------------	---

RNAV (GPS) RWY 18

MURFREESBORO MUNI (MBT)

▽ For uncompensated Baro-VNAV systems, LNAV/VNAV NA below -16°C (4°F) or above 54°C (130°F). DME/DME RNP-0.3 NA. MISSED APPROACH: Climb to 3000 direct URACE and hold.

AWOS-3 133.975	NASHVILLE APP CON 118.4 360.7	GCO 135.075	UNICOM 123.075 (CTAF)
--------------------------	---	-----------------------	---------------------------------



CATEGORY	A	B	C	D
LPV DA		859- ³ / ₄	250 (300- ³ / ₄)	NA
LNAV/VNAV DA		898- ⁷ / ₈	289 (300- ⁷ / ₈)	NA
LNAV MDA	1080-1	471 (500-1)	1080-1 ³ / ₈ 471 (500-1 ³ / ₈)	NA
C CIRCLING	1080-1	466 (500-1)	1280-1 ³ / ₄ 666 (700-1 ³ / ₄)	NA

SE-1, 28 NOV 2024 to 26 DEC 2024

SE-1, 28 NOV 2024 to 26 DEC 2024