

WAAS CH 99725 W34A	APP CRS 335°	Rwy Idg TDZE Apt Elev	5010 665 689
--	------------------------	-----------------------------	---

RNAV (GPS) RWY 34

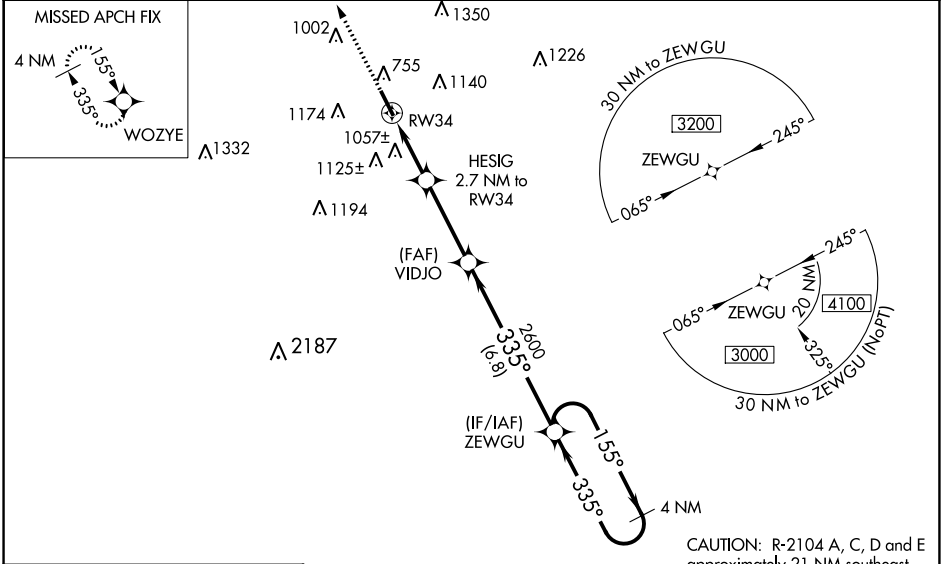
ABERNATHY FLD (GZS)

RNP APCH - GPS.

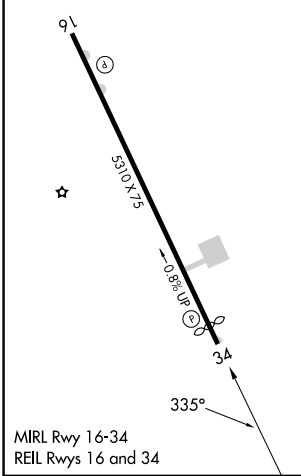
NA Baro-VNAV NA when using Huntsville Exec Tom Sharp Jr Fld altimeter setting. For uncompensated Baro-VNAV systems, LNAV/VNAV NA below -16°C (4°F) or above 39°C (102°F). Night landing: Rwy 16 NA. Helicopter visibility reduction below 3/4 SM NA. When local altimeter setting not received, use Huntsville Exec Tom Sharp Jr Fld altimeter setting: increase LPV DA to 996 feet and all visibilities 1/8 SM; increase LNAV/VNAV DA to 1524 feet and all visibilities 1/4 SM; increase all MDA 100 feet and visibility LNAV Cats C/D 1/8 SM and Circling Cats A/B 1/4 SM and Cat C 1/2 SM. VDP NA with Huntsville Exec Tom Sharp Jr Fld altimeter setting.

MISSED APPROACH:
Climb to 3000 direct WOZYE and hold.

AWOS-3 118.275	MEMPHIS CENTER 125.85 379.25	UNICOM 122.8 (CTAF)
--------------------------	--	-------------------------------



ELEV 689	TDZE 665
-----------------	-----------------



CATEGORY	A	B	C	D
LPV DA	915-1		250 (300-1)	
LNAV/VNAV DA	1443-2 ³ / ₄		778 (800-2 ³ / ₄)	
LNAV MDA	1320-1	655 (700-1)	1320-1 ⁷ / ₈	655 (700-1 ⁷ / ₈)
CIRCLING	1420-1 731 (800-1)	1480-1 791 (800-1)	1480-2 ¹ / ₄ 791 (800-2 ¹ / ₄)	1640-3 951 (1000-3)

SE-1, 28 NOV 2024 to 26 DEC 2024

SE-1, 28 NOV 2024 to 26 DEC 2024