

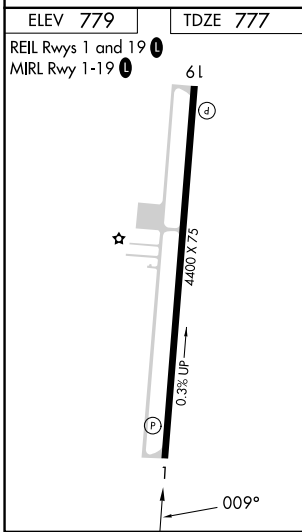
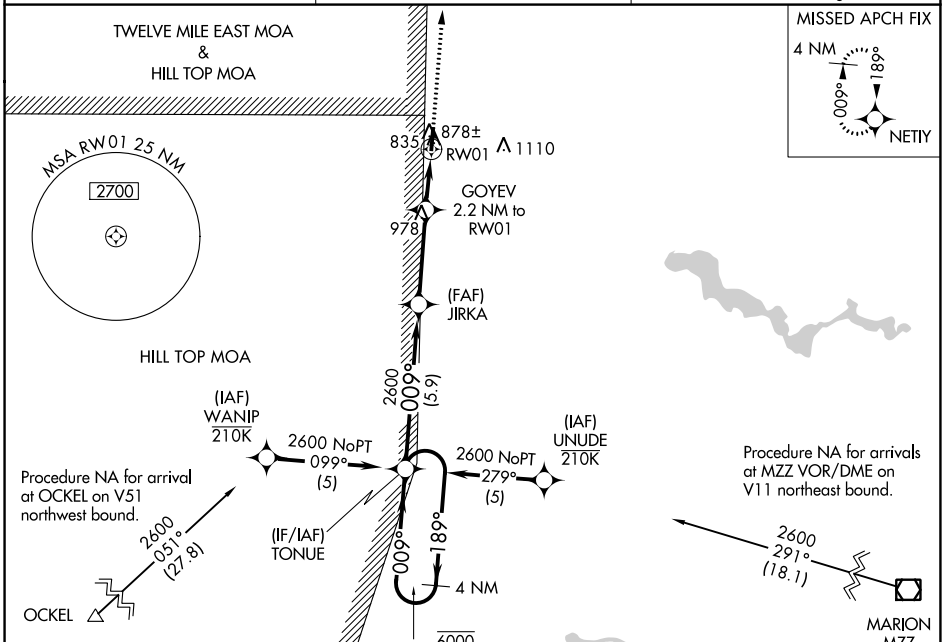
APP CRS	Rwy Idg	4400
009°	TDZE	777
	Apt Elev	779

RNAV (GPS) RWY 1

PERU MUNI (I76)

RNP APCH - GPS.		MISSED APPROACH: Climb to 2600 direct NETY and hold.
▼	Rwy 1 helicopter visibility reduction below 1 SM NA. Use Grissom ARB altimeter setting, when not received, use Logansport/Cass County altimeter setting: increase all MDAs 20 feet and Circling visibility Cat C and D ¼ SM.	
▲ NA		

KGUS ATIS 108.45 270.8	GRISSOM APP CON * 121.05 338.275	UNICOM 122.8 (CTAF) 0
----------------------------------	--	---------------------------------



ELEV 779	TDZE 777					
REIL Rwys 1 and 19 MIRL Rwy 1-19		4 NM Holding Pattern TONUE JIRKA NETY 6000 ← 189° 009° 2600 2600 009° 2600 3.00° TCH 47 1520 5.9 NM 3.4 NM 2.2				
Rwy 1 4400 x 75 0.3% UP 009°		CATEGORY A B C D	△ 1365 2600 NETY GOYEV 2.2 NM to RWY 1			
		LNAV MDA	1160-1	383 (400-1)	1160-1½	383 (400-1½)
		☑ CIRCLING	1280-1	501 (600-1)	1500-2 721 (800-2)	1500-2¼ 721 (800-2¼)

EC-2, 28 NOV 2024 to 26 DEC 2024

EC-2, 28 NOV 2024 to 26 DEC 2024