

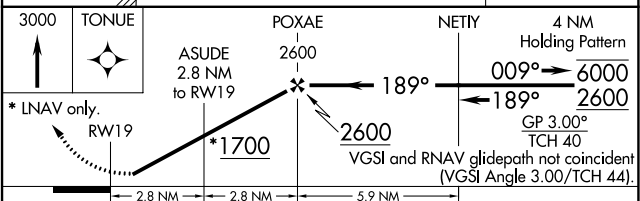
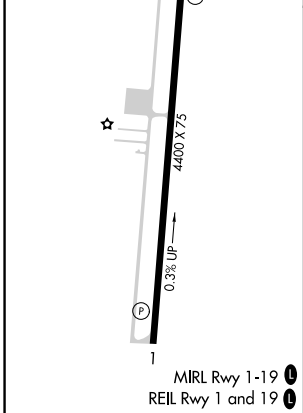
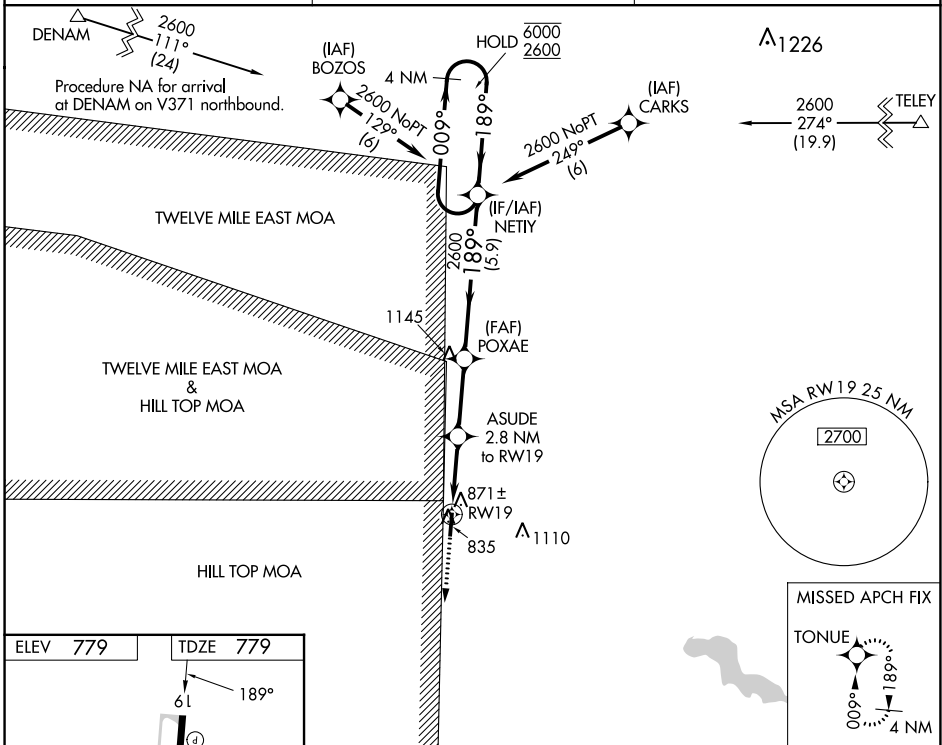
WAAS CH <b>50438</b> <b>W19A</b>	APP CRS <b>189°</b>	Rwy Idg TDZE Apt Elev	<b>4400</b> <b>779</b> <b>779</b>
--	------------------------	-----------------------------	---

# RNAV (GPS) RWY 19

PERU MUNI (I76)

RNP APCH.	<p><b>▼</b> Rwy 19 Helicopter visibility reduction below 3/4 SM NA. Baro-VNAV NA. Use Grissom ARB altimeter setting; when not received use Logansport altimeter setting and increase all DAs 8 feet.</p> <p><b>▲</b> NA</p>	<p>MISSED APPROACH: Climb to 3000 direct TONUE and hold.</p>
-----------	---	--

<p>KGUS ATIS <b>108.45 270.8</b></p>	<p>GRISSOM APP CON ★ <b>121.05 338.275</b></p>	<p>UNICOM <b>122.8 (CTAF) ①</b></p>
--	--	---



CATEGORY	A	B	C	D
LPV DA		1053-1	274 (300-1)	
LNAV/VNAV DA		1074-1	295 (300-1)	
LNAV MDA	1160-1	381 (400-1)	1160-1 1/8	381 (400-1 1/8)
<b>☑</b> CIRCLING	1280-1	501 (600-1)	1500-2 721 (800-2)	1500-2 1/4 721 (800-2 1/4)

EC-2, 28 NOV 2024 to 26 DEC 2024

EC-2, 28 NOV 2024 to 26 DEC 2024