

NDB EOE	APP CRS	Rwy Idg	4001
278	213°	TDZE	570
		Apt Elev	570

NDB RWY 22

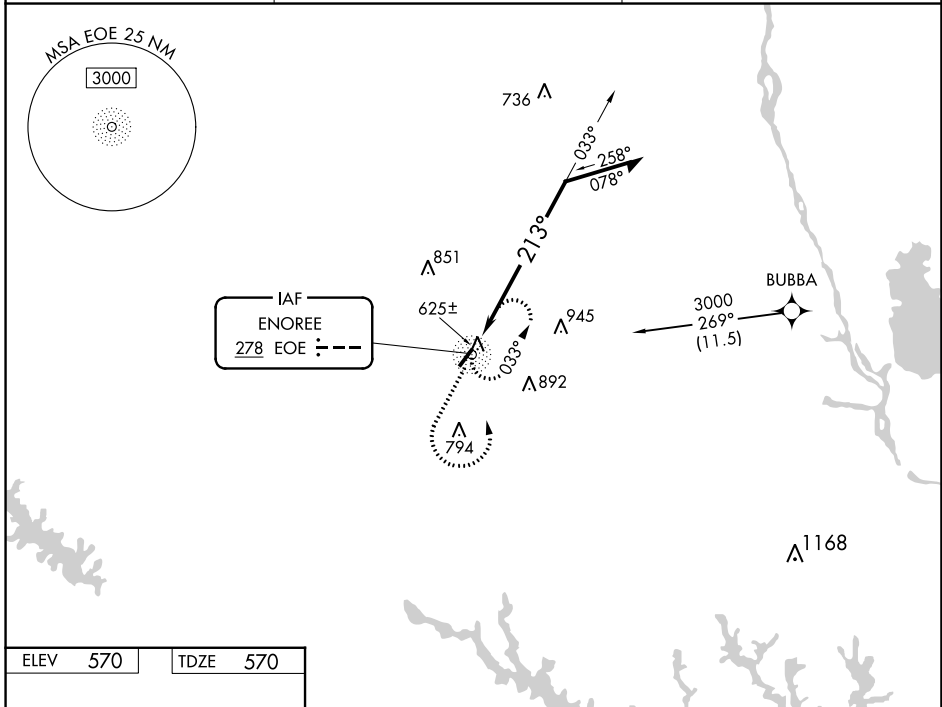
NEWBERRY COUNTY (EOE)

RNAV 1 - GPS or RADAR required for procedure entry.

▼ Rwy 22 helicopter visibility reduction below 3/4 SM NA. When local altimeter setting not received, use Greenwood altimeter setting and increase all MDAs 80 feet.

MISSED APPROACH: Climb to 1800 then climbing left turn to 3000 direct EOE NDB and hold.

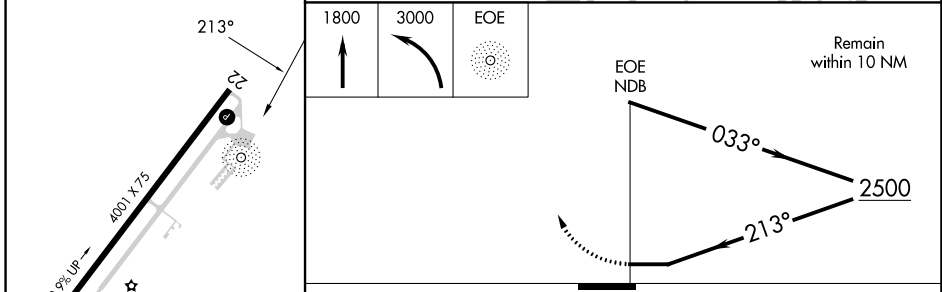
AWOS-3 124.275	COLUMBIA APP CON 133.4 285.6	UNICOM 122.8 (CTAF) 0
--------------------------	--	---------------------------------



SE-2, 28 NOV 2024 to 26 DEC 2024

SE-2, 28 NOV 2024 to 26 DEC 2024

ELEV 570	TDZE 570
----------	----------



1800	3000	EOE	Remain within 10 NM
↑	↷		
		EOE NDB	
		033°	2500
		213°	

CATEGORY	A	B	C	D
S-22	1100-1	530 (600-1)		NA
C CIRCLING	1100-1 530 (600-1)	1160-1 590 (600-1)		NA