

WAAS CH 53529 W09A	APP CRS 095°	Rwy Idg 5005 TDZE 752 Apt Elev 752
--	------------------------	---

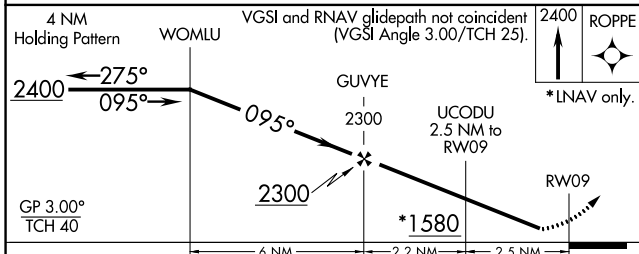
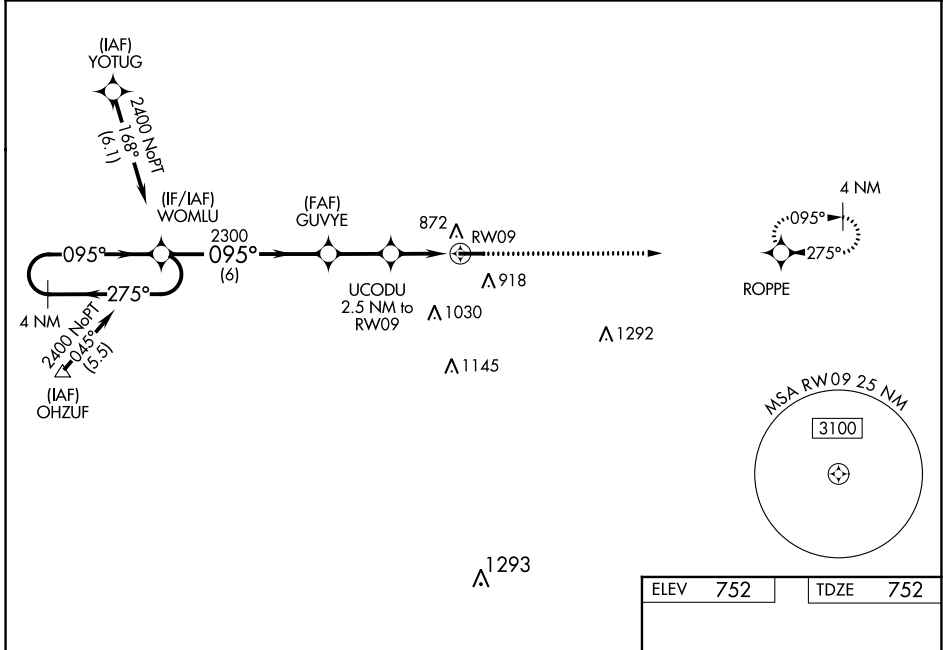
RNAV (GPS) RWY 9

FOSTORIA METRO (F'ZI)

⚠ DME/DME RNP-0.3 NA. Visibility reduction by helicopters NA. Baro-VNAV NA when using Findlay altimeter setting. For uncompensated Baro-VNAV systems, LNAV/VNAV NA below -16°C (4°F) or above 54°C (130°F). When local altimeter setting not received, use Findlay altimeter setting and increase LPV DA to 1122 feet and all visibilities 1/8 SM; increase LNAV/VNAV DA to 1121 feet and all visibilities 1/8 SM; increase all MDAs 60 feet and LNAV Cat C visibility 1/8 SM, increase Circling Cat C visibility 1/4 SM. When VGSI inop, Straight-in/Circling Rwy 9 procedure NA at night.

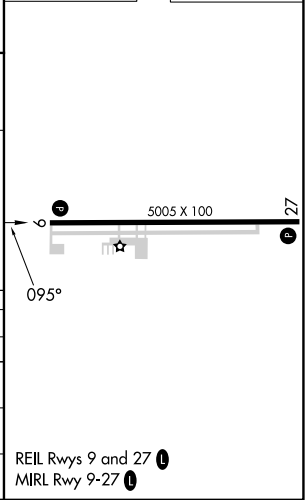
⚠ MISSED APPROACH: Climb to 2400 direct ROPPE and hold.

AWOS-3 124.625	TOLEDO APP CON 126.1 307.0	UNICOM 122.7 (CTAF) 0
--------------------------	--------------------------------------	---------------------------------



ELEV 752	TDZE 752
----------	----------

CATEGORY	A	B	C	D
LPV DA	1075-1 1/8	323 (400-1 1/8)		NA
LNAV/VNAV DA	1074-1 1/8	322 (400-1 1/8)		NA
LNAV MDA	1180-1	428 (500-1)	1180-1 1/4 428 (500-1 1/4)	NA
CIRCLING	1280-1 528 (600-1)	1320-1 568 (600-1)	1400-1 3/4 648 (700-1 3/4)	NA



EC-2, 28 NOV 2024 to 26 DEC 2024

EC-2, 28 NOV 2024 to 26 DEC 2024