

WAAS CH 93901 W36A	APP CRS 001°	Rwy Idg 6502 TDZE 296 Apt Elev 298
--	------------------------	---

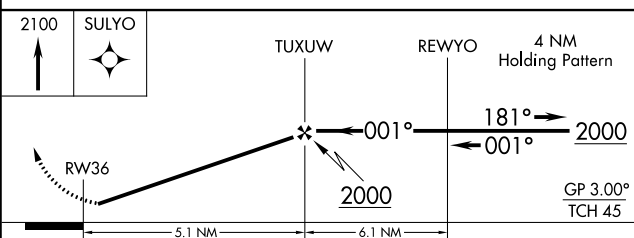
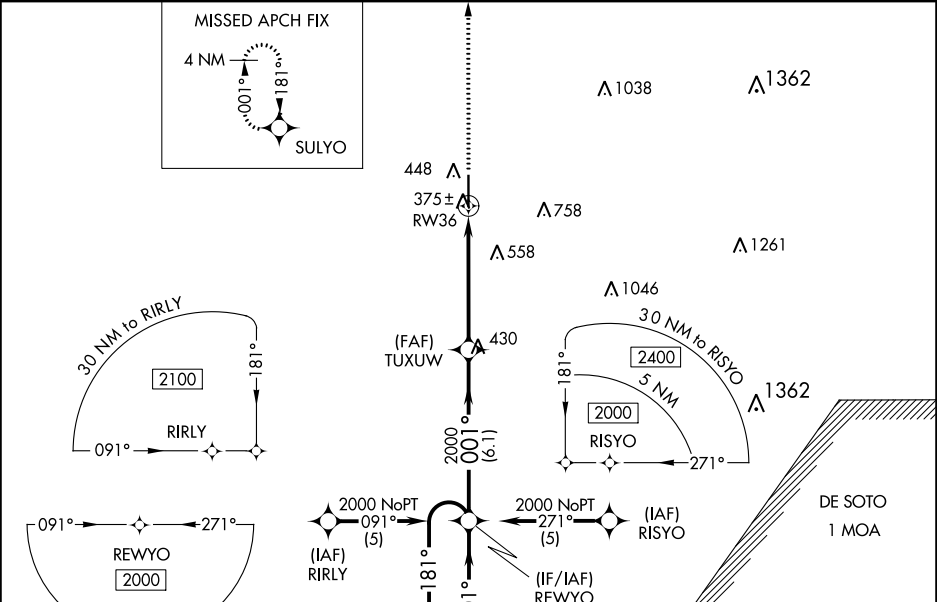
RNAV (GPS) RWY 36

HATTIESBURG/LAUREL RGNL (PIB)

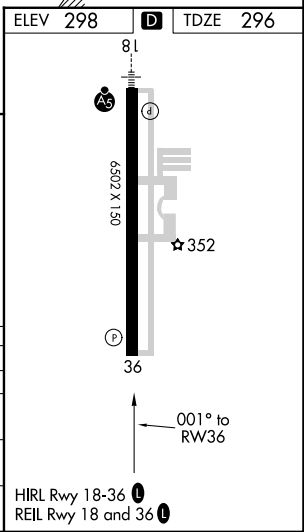
⚠ For uncompensated Baro-VNAV systems, LNAV/VNAV NA below -1.5°C (5°F) or above 48°C (118°F). DME/DME RNP-0.3 NA. Visibility reduction by helicopters NA. When local altimeter setting not received, use Hattiesburg Bobby L Chain Muni altimeter setting: increase LPV DA to 597 feet and LNAV/VNAV DA to 676; increase all MDA 60 feet and visibility LNAV Cat C/D and Circling Cat C/D ¼ SM. Baro-VNAV NA when using Hattiesburg Bobby L Chain Muni altimeter setting.

MISSED APPROACH:
Climb to 2100 direct SULYO and hold.

AWOS-3PT 128.325	HOUSTON CENTER 126.8 327.8	UNICOM 123.0 (CTAF) 0
----------------------------	--------------------------------------	---------------------------------



2100	SULYO	TUXUW	REWYO	4 NM Holding Pattern
↑	✧			
RW36		← 001°	→ 181°	→ 2000
		← 001°	← 001°	← 2000
		← 2000		GP 3.00°
		← 2000		TCH 45
		← 5.1 NM	← 6.1 NM	
CATEGORY	A	B	C	D
LPV DA	546-1		250 (300-1)	
LNAV/VNAV DA	625-1¼		329 (400-1¼)	
LNAV MDA	680-1		384 (400-1)	
			680-1¼	
			384 (400-1¼)	
CIRCLING	760-1		462 (500-1)	
			1120-2½	
			822 (900-2½)	
			1120-2¾	
			822 (900-2¾)	



SC-4, 28 NOV 2024 to 26 DEC 2024

SC-4, 28 NOV 2024 to 26 DEC 2024

HIRL Rwy 18-36 0
REIL Rwy 18 and 36 0