

WAAS CH 49128 W18A	APP CRS 177°	Rwy Idg TDZE Apt Elev	4100 1246 1250
--	------------------------	-----------------------------	---

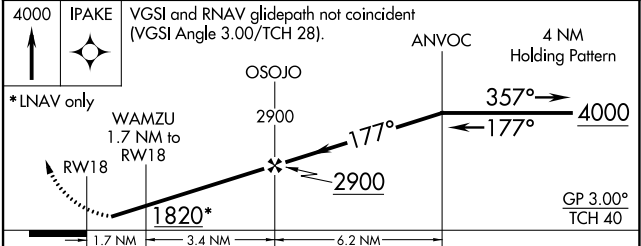
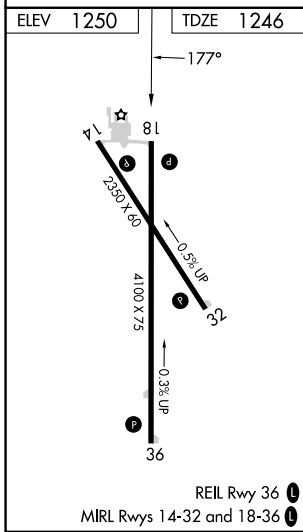
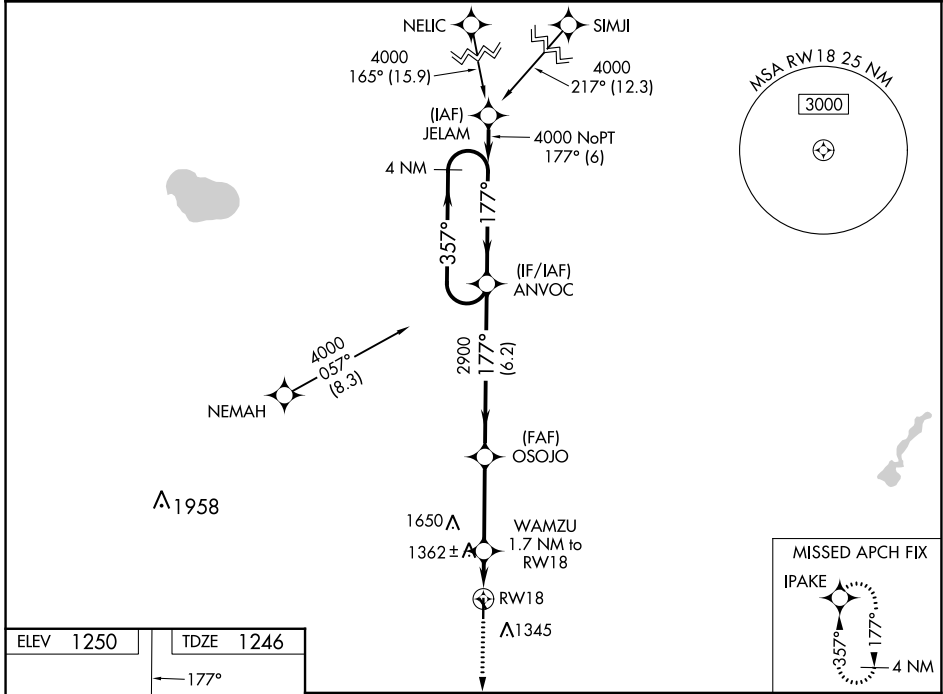
RNAV (GPS) RWY 18

SAC CITY MUNI (SKI)

▼ Night landing: Rwy 14 NA. Baro-VNAV NA. DME/DME RNP-0.3 NA. Helicopter visibility reduction below ¼ SM NA. Use Carroll altimeter setting; when not received, use Denison altimeter setting and increase all DA 15 feet and all MDA 20 feet. Increase LPV and LNAV/VNAV visibility ½ mile all Cats.

▲ NA MISSED APPROACH: Climb to 4000 direct IPAKE and hold.

CIN AWOS-3 118.025	MINNEAPOLIS CENTER 134.0 288.3	UNICOM 122.8 (CTAF) 0
------------------------------	--	---------------------------------



CATEGORY	A	B	C	D
LPV DA	1553-1	307 (400-1)		NA
LNAV/VNAV DA	1553-1	307 (400-1)		NA
LNAV MDA	1680-1	434 (500-1)		NA
CIRCLING	1740-1	490 (500-1)		NA

NC-3, 28 NOV 2024 to 26 DEC 2024

NC-3, 28 NOV 2024 to 26 DEC 2024