

WAAS CH <b>70407</b> <b>W29A</b>	APP CRS <b>291°</b>	Rwy Idg TDZE Apt Elev	<b>5480</b> <b>127</b> <b>145</b>
--	------------------------	-----------------------------	---

# RNAV (GPS) RWY 29

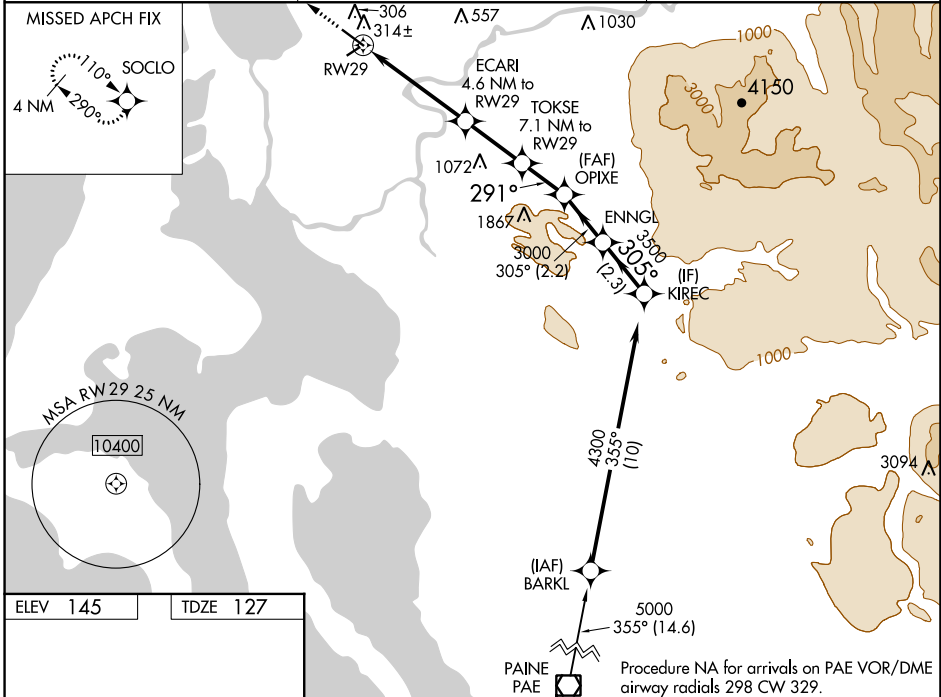
SKAGIT RGNL (BVS)

RNP APCH.

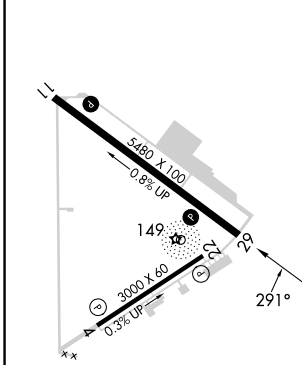
▼ For uncompensated Baro-VNAV systems, LNAV/VNAV NA below -15°C or above 54°C.  
 ▲ Baro-VNAV and VDP NA when using Friday Harbor altimeter setting. When local altimeter setting not received use Friday Harbor altimeter setting; increase LPV DA to 438 feet, LNAV/VNAV DA to 536 feet and all Cats visibility ¼ SM; increase all MDA 60 feet.

MISSED APPROACH: Climb to 4000 direct SOCLO and hold, continue climb-in-hold to 4000.

AWOS-3 <b>121.125</b>	WHIDBEY APP CON <b>120.7 270.8</b>	UNICOM <b>123.075 (CTAF)</b>
--------------------------	---------------------------------------	---------------------------------



ELEV 145	TDZE 127
----------	----------



- LIRL Rwy 4-22
- REIL Rws 11 and 29
- MIRL Rwy 11-29

4000	SOCLO				
*LNAV only	ECARI 4.6 NM to RW29	TOKSE 7.1 NM to RW29	OPIXE 3000	ENNGL	KIREC 4300
	1600*	2400*	3000	3500	GP 3.00° TCH 42
	1.4 NM	3.2 NM	2.5 NM	1.9 NM	2.2 NM
2.3 NM					
CATEGORY	A	B	C	D	
LPV DA	377-7/8		250 (300-7/8)		
LNAV/VNAV DA	475-1¼		348 (400-1¼)		
LNAV MDA	580-1	453 (500-1)	580-1¾	453 (500-1¾)	

NW-1, 28 NOV 2024 to 26 DEC 2024

NW-1, 28 NOV 2024 to 26 DEC 2024