

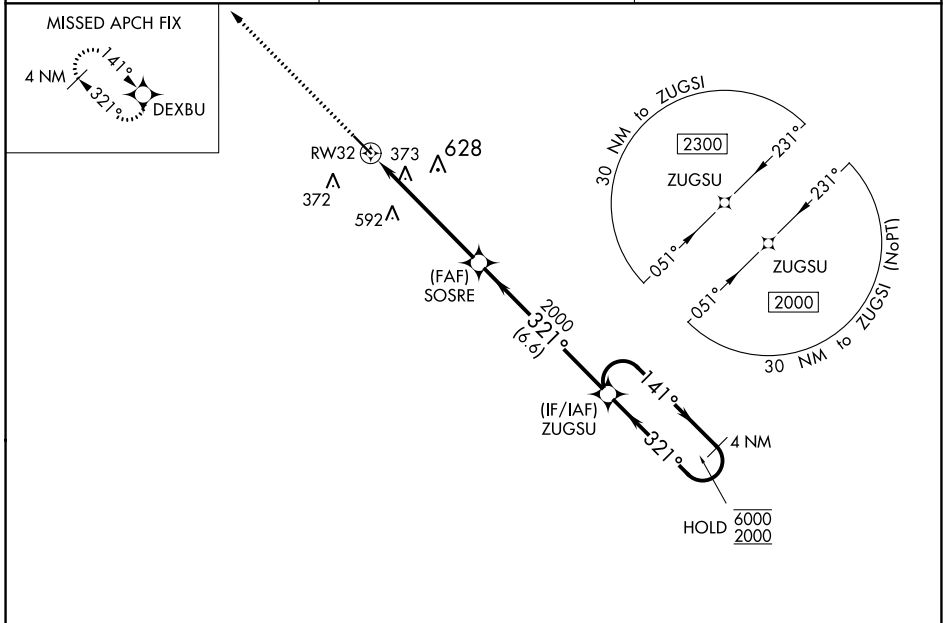
WAAS CH 61318 W32A	APP CRS 321°	Rwy Idg 4999 TDZE 186 Apt Elev 187
--	------------------------	---

RNAV (GPS) RWY 32

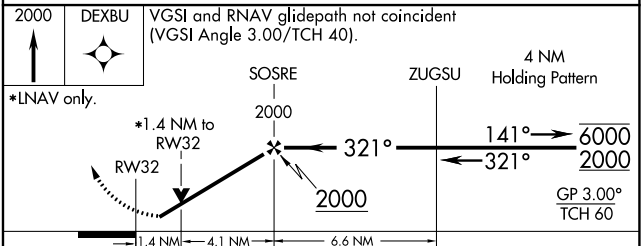
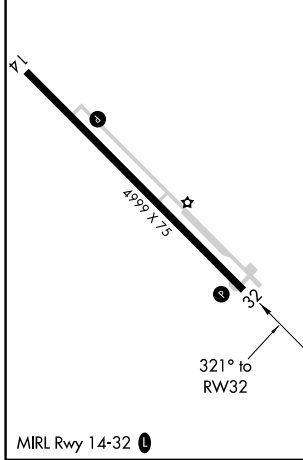
HOMERVILLE (HOE)

RNP APCH.	MISSED APPROACH: Climb to 2000 direct DEXBU and hold.
<p>▼ Rwy 32 helicopter visibility reduction below 3/4 SM NA.</p> <p>▲ For uncompensated Baro-VNAV systems, LNAV/VNAV NA below -15°C or above 54°C.</p>	

AWOS-3 118.725	VALDOSTA APP CON ★ 126.6 285.6	CTAF 122.9
--------------------------	--	----------------------



ELEV 187	TDZE 186
-----------------	-----------------



CATEGORY	A	B	C	D
LPV DA	491-1 305 (400-1)			
LNAV/VNAV DA	672-1 3/8 486 (500-1 3/8)			
LNAV MDA	680-1 494 (500-1)	680-1 3/8 494 (500-1 3/8)		
<input checked="" type="checkbox"/> CIRCLING	680-1 493 (500-1)	740-1 553 (600-1)	940-2 1/4 753 (800-2 1/4)	940-2 1/2 753 (800-2 1/2)

SE-4, 28 NOV 2024 to 26 DEC 2024

SE-4, 28 NOV 2024 to 26 DEC 2024