

TUCSON DEP CON
118.75 269.55
ASOS
121.125
UNICOM
122.8

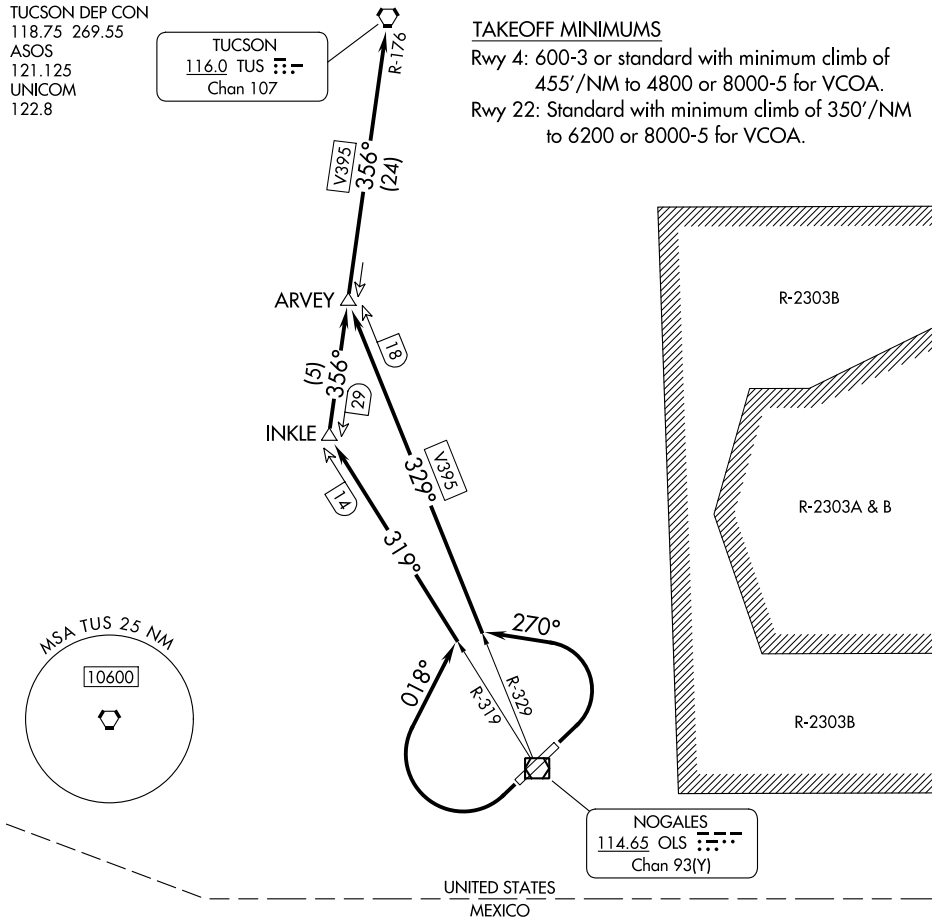
TUCSON
116.0 TUS
Chan 107

TAKEOFF MINIMUMS

Rwy 4: 600-3 or standard with minimum climb of 455'/NM to 4800 or 8000-5 for VCOA.
Rwy 22: Standard with minimum climb of 350'/NM to 6200 or 8000-5 for VCOA.

SW-4, 28 NOV 2024 to 26 DEC 2024

SW-4, 28 NOV 2024 to 26 DEC 2024



NOTE: Chart not to scale.

(CONTINUED ON FOLLOWING PAGE)

DEPARTURE ROUTE DESCRIPTION

TAKEOFF RUNWAY 4: Climbing left turn heading 270° to intercept OLS VOR/DME R-329 to ARVEY INT/OLS 18 DME, thence. . . .

TAKEOFF RUNWAY 22: Climbing right turn heading 018° to intercept OLS VOR/DME R-319 to INKLE INT/OLS 14 DME, to TUS R-176 to ARVEY INT/OLS 18 DME, thence. . . .

VCOA ALL RUNWAYS: Obtain ATC approval for VCOA when requesting IFR clearance. Climb in visual conditions to cross Nogales Intl Airport at or above 11800, Max 210K, before proceeding on course, thence. . . .

. . . .on TUS VORTAC R-176 to cross TUS VORTAC at or above MEA/MCA for assigned route of flight.

TAKEOFF OBSTACLE NOTES

Rwy 4: Tree 58' from DER, 455' left of centerline, 3963' MSL. Tree 80' from DER, 174' right of centerline, 6' AGL/3958' MSL. Trees beginning 97' from DER, 446' left of centerline, up to 15' AGL/3964' MSL. Tree 252' from DER, 43' right of centerline, 5' AGL/3962' MSL. Tree 261' from DER, 463' left of centerline, 3971' MSL. Trees beginning 308' from DER, 37' right of centerline, up to 6' AGL/ 3964' MSL. Trees, fence beginning 334' from DER, 136' left of centerline, up to 3987' MSL. Trees beginning 368' from DER, 64' right of centerline, up to 3991' MSL. Tree, terrain beginning 603' from DER, 546' right of centerline, up to 3993' MSL. Trees, fence, terrain beginning 659' from DER, 13' left of centerline, up to 3995' MSL. Trees, terrain, fence beginning 833' from DER, 50' right of centerline, up to 4010' MSL. Tree, terrain beginning 1179' from DER, 118' left of centerline, up to 5' AGL/ 3996' MSL. Trees, terrain beginning 1199' from DER, 97' right of centerline, up to 4036' MSL. Trees, terrain beginning 1241' from DER, 66' left of centerline, up to 4018' MSL. Tree, terrain beginning 1412' from DER, 90' right of centerline, up to 4043' MSL. Vehicles on road, terrain beginning 1624' from DER, 642' left of centerline, up to 4028' MSL. Terrain beginning 1637' from DER, 2' right of centerline, up to 4052' MSL. Trees, vehicles on road, terrain beginning 1688' from DER, 45' left of centerline, up to 4035' MSL. Terrain beginning 1825' from DER, 38' right of centerline, up to 4067' MSL. Pole, vehicles on road, trees beginning 1853' from DER, 475' left of centerline, up to 21' AGL/4043' MSL. Terrain 2033' from DER, 186' left of centerline, 4047' MSL. Trees, vehicles on road, terrain beginning 2041' from DER, 74' left of centerline, up to 7' AGL/4052' MSL. Terrain 2221' from DER, 269' left of centerline, 4055' MSL. Trees, vehicles on road, terrain beginning 2253' from DER, 170' left of centerline, up to 18' AGL/4080' MSL. Terrain beginning 2354' from DER, 20' right of centerline, up to 4068' MSL. Trees, vegetation vehicles on road, pole, terrain beginning 2491' from DER, 55' left of centerline, up to 14' AGL/4093' MSL. Terrain beginning 2539' from DER, 125' right of centerline, up to 4087' MSL. Vehicles on road 2657' from DER, 32' left of centerline, 15' AGL/ 4095' MSL. Vehicles on road, trees, terrain beginning 2672' from DER, 6' left of centerline, up to 15' AGL/4096' MSL. Vehicles on road, terrain beginning 2688' from DER, 2' right of centerline, up to 15' AGL/4096' MSL. Terrain, vehicles on road beginning 2768' from DER, 98' right of centerline, up to 4112' MSL. Vehicles on road 2987' from DER, 530' right of centerline, 4117' MSL. Vehicles on road 2995' from DER, 635' right of centerline, 4121' MSL. Vehicles on road, terrain beginning 3009' from DER, 489' right of centerline, up to 4123' MSL. Vehicles on road, terrain beginning 3351' from DER, 12' right of centerline, up to 4130' MSL. Vehicles on road, terrain beginning 3449' from DER, 633' right of centerline, up to 4143' MSL. Vehicles on road 3499' from DER, 1364' right of centerline, 4149' MSL. Vehicles on road, terrain, vegetation beginning 3570' from DER, 101' right of centerline, up to 4155' MSL. Terrain beginning 3581' from DER, 42' left of centerline, up to 4112' MSL. Terrain beginning 4127' from DER, 627' right of centerline, up to 4156' MSL. Tree, terrain beginning 4143' from DER, 768' right of centerline, up to 4180' MSL. Trees, terrain beginning 4262' from DER, 426' right of centerline, up to 4184' MSL. Tree, terrain beginning 4495' from DER, 709' right of centerline, up to 4210' MSL. Terrain beginning 4627' from DER, 1171' right of centerline, up to 4217' MSL. Trees, terrain beginning 4737' from DER, 216' right of centerline, up to 4223' MSL. Tree, terrain beginning 5806' from DER, 343' right of centerline, up to 4241' MSL. Trees, terrain beginning 5953' from DER, 409' right of centerline, up to 4254' MSL. Trees, terrain beginning 1 NM from DER, 58' right of centerline, up to 4256' MSL. Tree, terrain beginning 1 NM from DER, 1260' left of centerline, up to 4136' MSL. Trees, terrain beginning 1.1 NM from DER, 433' left of centerline, up to 4151' MSL. Trees, pole, terrain beginning 1.2 NM from DER, 75' left of centerline, up to 16' AGL/4221' MSL. Trees, vegetation, terrain beginning 1.3 NM from DER, 84' left of centerline, up to 4254' MSL. Trees, terrain beginning 1.4 NM from DER, 25' left of centerline, up to 11' AGL/4283' MSL. Tree, terrain beginning 1.4 from DER, 140' right of centerline, up to 4326' MSL. Tree, terrain beginning 1.5 NM from DER, 79' right of centerline, up to 11' AGL/4327' MSL. Tree, terrain beginning 1.7 NM from DER, 639' right of centerline, up to 4345' MSL. Tree, terrain beginning 1.8 NM from DER, 172' right of centerline, up to 4367' MSL. Tree, terrain beginning 1.9 NM from DER, 628' right of centerline, up to 4384' MSL. Terrain, vehicles on road, trees beginning 2 NM from DER, 935' right of centerline, up to 4406' MSL. Terrain 2.1 NM from DER, 616' left of centerline, 4299' MSL. Terrain, vehicles on road, trees beginning 2.2 NM from DER, 1859' right of centerline, 234' left of centerline, up to 4451' MSL. Terrain, trees, vehicles on road, beginning 2.3 NM from DER, 835' right of centerline, up to 14' AGL/4535' MSL.

Rwy 22: Tree 3' from DER, 445' left of centerline, 3847' MSL. Tree 19' from DER, 141' left of centerline, 10' AGL/3848' MSL. Tree 29' from DER, 339' left of centerline, 3849' MSL. Tree, vegetation beginning 45' from DER, 201' left of centerline, up to 17' AGL/3851' MSL. Tree 48' from DER, 504' right of centerline, 3845' MSL. Tree, vegetation beginning 112' from DER, 49' right of centerline, up to 24' AGL/3854' MSL. Vehicles on road, tree beginning 2 NM from DER, 3648' left of centerline, up to 15' AGL/4208' MSL. Tree 2.3 NM from DER, 3969' left of centerline, 11' AGL/4219' MSL.

SW-4, 28 NOV 2024 to 26 DEC 2024

SW-4, 28 NOV 2024 to 26 DEC 2024