

WAAS CH <b>93920</b>	APP CRS <b>308°</b>	Rwy Idg TDZE Apt Elev	<b>4010</b> <b>1123</b> <b>1123</b>
-------------------------	------------------------	-----------------------------	---

# RNAV (GPS) RWY 31

LITTLE FALLS/MORRISON COUNTY-LINDBERGH FLD (LXL)

### RNP APCH.

**⚠** Baro-VNAV NA when using St Cloud altimeter setting. For uncompensated Baro-VNAV systems, LNAV/VNAV NA below -17°C or above 32°C. Rwy 31 visibility reduction below ¼ SM by helicopters NA. When local altimeter setting not received, use St. Cloud altimeter setting and increase all DAs 76 feet and all MDAs 80 feet; increase LPV all Cats visibility ½ SM and LNAV/VNAV all Cats, LNAV Cat C/D and Circling Cat C/D visibility ¼ SM. Circling Rwy 18, 36 NA.

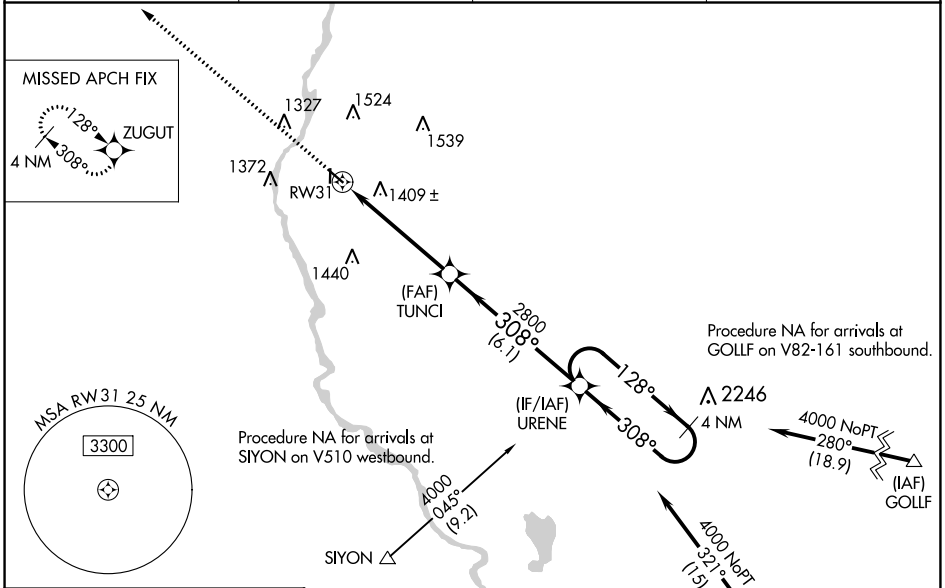
**MISSED APPROACH:**  
Climb to 3000 direct ZUGUT and hold.

AWOS-3  
**119.45**

MINNEAPOLIS CENTER  
**118.05 239.0**

GCO  
**121.725**

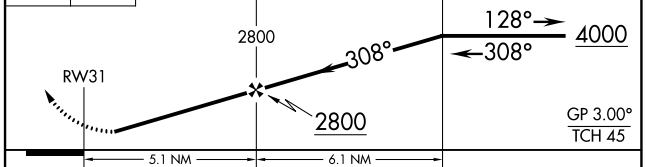
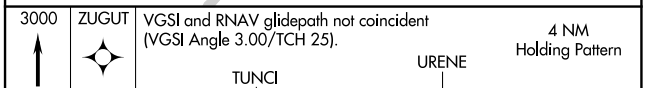
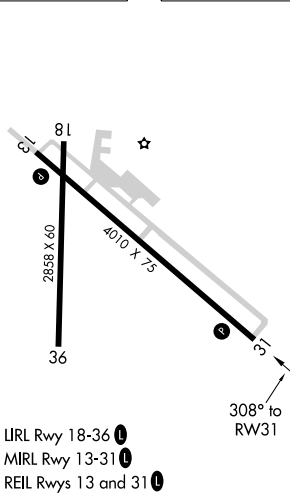
UNICOM  
**122.8 (CTAF) 0**



NC-1, 28 NOV 2024 to 26 DEC 2024

NC-1, 28 NOV 2024 to 26 DEC 2024

ELEV 1123 **D** TDZE 1123



CATEGORY	A	B	C	D
LPV DA		1517-1 <sup>3</sup> / <sub>8</sub>	394 (400-1 <sup>3</sup> / <sub>8</sub> )	
LNAV/VNAV DA		1749-2 <sup>1</sup> / <sub>4</sub>	626 (700-2 <sup>1</sup> / <sub>4</sub> )	
LNAV MDA	1660-1	537 (600-1)	1660-1 <sup>1</sup> / <sub>2</sub>	537 (600-1 <sup>1</sup> / <sub>2</sub> )
CIRCLING	1700-1	1800-1	1840-2	2000-2 <sup>3</sup> / <sub>4</sub>
	577 (600-1)	677 (700-1)	717 (800-2)	877 (900-2 <sup>3</sup> / <sub>4</sub> )

# RNAV (GPS) RWY 31