

(BYTER1.BYTER) 23166

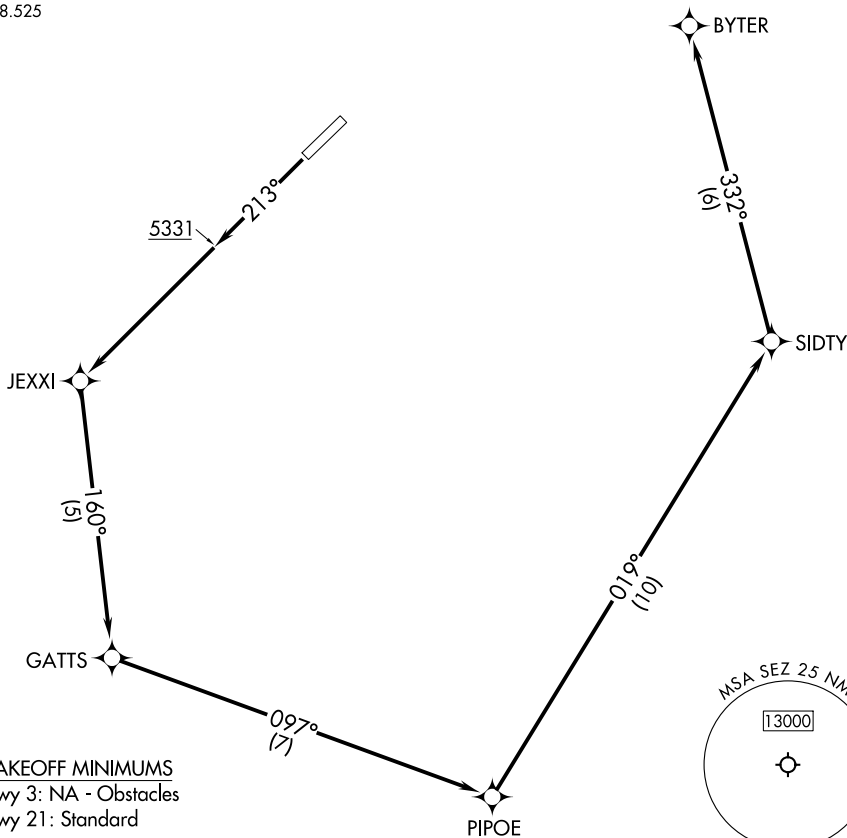
BYTER ONE DEPARTURE (OBSTACLE) (RNAV)

AL-6169 (FAA)

SEDONA (SE/Z)
SEDONA, ARIZONA

PHOENIX DEP CON
126.375 236.775
AWOS-3PT
118.525

RNAV 1 - GPS



TAKEOFF MINIMUMS
Rwy 3: NA - Obstacles
Rwy 21: Standard

TAKEOFF OBSTACLE NOTES

- Rwy 21: Trees, terrain, light poles, vegetation, fence beginning from DER, 94' left of centerline, up to 12' AGL/4758' MSL.
- Light poles 9' from DER, 93' right of centerline, 4' AGL/4737' MSL.
- Vegetation 16' from DER, 173' right of centerline, 4738' MSL.
- Vegetation, trees, fence beginning 19' from DER, 144' left of centerline, up to 4760' MSL.
- Pole and vegetation beginning 31' from DER, 130' right of centerline, up to 21' AGL/4743' MSL.

NOTE: Chart not to scale

DEPARTURE ROUTE DESCRIPTION

TAKEOFF RUNWAY 21: Climb on heading 213° to 5331, then climb direct JEXXI, then climbing left turn on track 160° to GATTS, then on track 097° to PIPOE, then on track 019° to SIDTY, then on track 332° to cross BYTER at or above MEA for route of flight.

BYTER ONE DEPARTURE (OBSTACLE) (RNAV)

(BYTER1.BYTER) 15JUN23

SEDONA, ARIZONA
SEDONA (SE/Z)

SW-4, 28 NOV 2024 to 26 DEC 2024

SW-4, 28 NOV 2024 to 26 DEC 2024