

WAAS CH <b>82404</b> <b>W28A</b>	APP CRS <b>281°</b>	Rwy Idg TDZE Apt Elev	<b>4001</b> <b>928</b> <b>928</b>
--	------------------------	-----------------------------	---

# RNAV (GPS) RWY 28

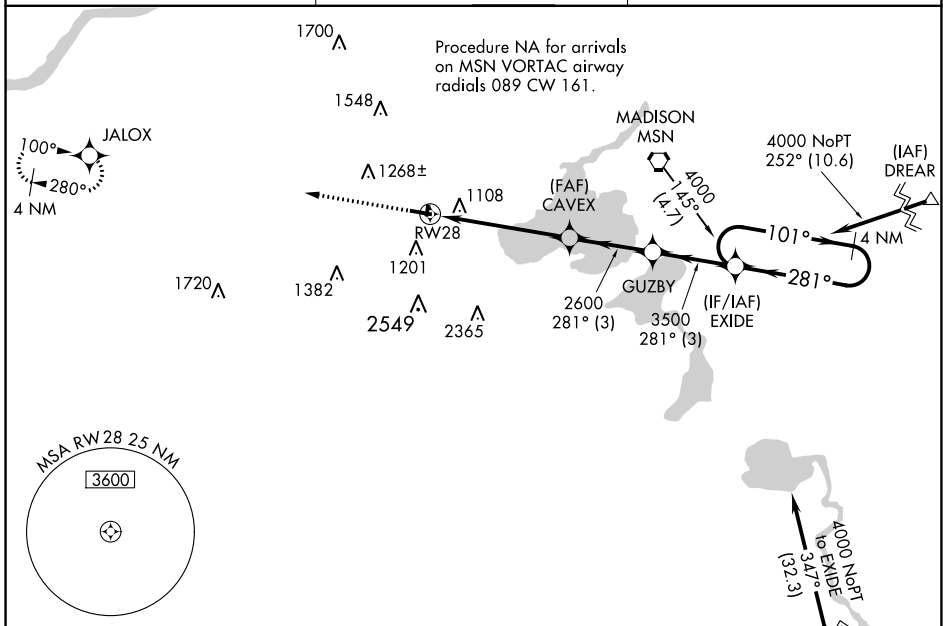
MIDDLETON MUNI/MOREY FLD (C29)

RNP APCH - GPS.

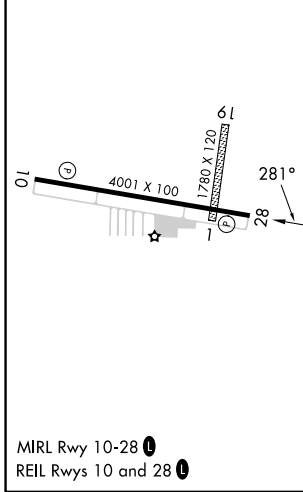
**Baro-VNAV NA.** Helicopter visibility reduction below ¾ SM NA. When local altimeter setting not received, use Dane County Rgnl/Truax Fld altimeter setting. VDP NA when using Dane County Rgnl/Truax Fld altimeter setting. Circling NA to Rwy's 1 and 19.

**MISSED APPROACH:** Climb to 4000 direct JALOX and hold.

AWOS-3 <b>118.675</b>	MADISON APP CON * <b>135.45 343.7</b>	UNICOM <b>123.0</b> (CTAF) <b>0</b>
--------------------------	--	--



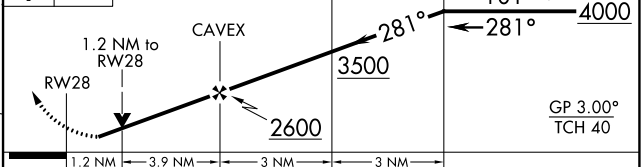
ELEV 928	TDZE 928
----------	----------



4000 JALOX VGSI and RNAV glidepath not coincident (VGSI Angle 4.00/TCH 36).

EXIDE Holding Pattern 4 NM

GP 3.00° TCH 40



CATEGORY	A	B	C	D
LPV DA	1326-1½		398 (400-1½)	NA
LNAV/VNAV DA	1442-1¾		514 (600-1¾)	NA
LNAV MDA	1480-1	552 (600-1)	1480-1½ 552 (600-1½)	NA
CIRCLING	1560-1 632 (700-1)	1640-1 712 (800-1)	1660-2 732 (800-2)	NA

EC-3, 28 NOV 2024 to 26 DEC 2024

EC-3, 28 NOV 2024 to 26 DEC 2024